

# Apartment in Sliema



**Sliema, Sliema and St Julians Surroundings**



**€2,700**

Reference No: 240511001-4584

 Total Rooms: **6**

 Floor Area (m<sup>2</sup>) : **0**

 Bathrooms: **2**

 Bedrooms: **3**

# Apartment - For Rent - Sliema

Duplex apartment forming part of this much sought after development, located in the heart of Sliema, minutes away from the shops and cafes. Accommodation comprises of an entrance hall, an open plan kitchen / living / dining area, two double bedrooms, a bathroom and laundry room. On the upper floor is the master bedroom with walk in wardrobe and en suite bathroom. This property includes all amenities, as well as underlying parking. Viewings are highly recommended.

## Features

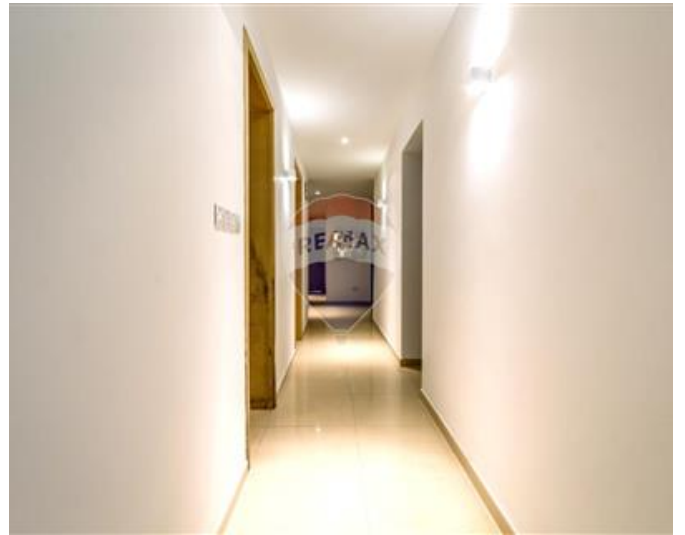
- ✓ Video Hall Porter
- ✓ Pool
- ✓ Balcony
- ✓ Entrance Hall
- ✓ Terrace

## Rooms

- ✓ Kitchen/Living/Dining : 0 x 0 m (0 m2)
- ✓ Double Bedroom : 0 x 0 m (0 m2)
- ✓ Double Bedroom : 0 x 0 m (0 m2)
- ✓ Double Bedroom : 0 x 0 m (0 m2)
- ✓ Bathroom : 0 x 0 m (0 m2)
- ✓ Bathroom : 0 x 0 m (0 m2)

# Gallery









**RE/MAX Elite - Sliema**

RE/MAX Elite - Sliema

M: 21344204

E: [elt@remax.com.mt](mailto:elt@remax.com.mt)

T: 21344204

**RE/MAX Elite - Sliema**

241, Tower Road, Sliema, Malta