

# Apartment Duplex in Sliema




**Sliema, Sliema and St Julians Surroundings**



**€1,700**

Reference No: 240511001-4196

 Total Rooms: **10**

 Floor Area (m<sup>2</sup>) : **0**

 Bathrooms: **3**

 Bedrooms: **4**

# Apartment Duplex - For Rent - Sliema

A unique duplex Seafront apartment located on Tigne seafront, enjoying excellent, unobstructed views of Valletta and Marsamxett Harbour. The property is being offered unfurnished. Offering a spacious layout and plenty of natural light, comprising of four bedrooms and 2 bathrooms (1 ensuite) on the upper level and 3 reception rooms, a breakfast room, kitchen and bathroom on the lower level. Each floor has 2 balconies on the seafront side and 2 balconies on the back garden side. The property is fully air-conditioned and has double glazing aluminum apertures. There is an optional one car lock-up garage at street level. Hard to come by, viewings are recommended.

## Features

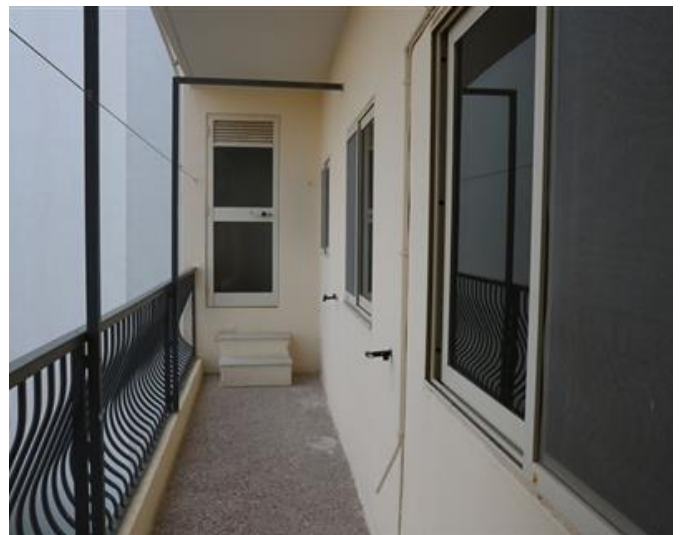
- ✓ Ceramic Floor
- ✓ Entrance Hall
- ✓ Balcony
- ✓ En Suite
- ✓ Terrace
- ✓ CCTV

## Rooms

- ✓ Double Bedroom : 0 x 0 m (0 m2)
- ✓ Double Bedroom : 0 x 0 m (0 m2)
- ✓ Double Bedroom : 0 x 0 m (0 m2)
- ✓ Shower Ensuite : 0 x 0 m (0 m2)
- ✓ Double Bedroom : 0 x 0 m (0 m2)
- ✓ Dining : 0 x 0 m (0 m2)
- ✓ Living : 0 x 0 m (0 m2)
- ✓ Bathroom : 0 x 0 m (0 m2)
- ✓ Kitchen : 0 x 0 m (0 m2)
- ✓ Shower : 0 x 0 m (0 m2)

# Gallery









**RE/MAX Elite - Sliema**

RE/MAX Elite - Sliema

M: 21344204

E: [elt@remax.com.mt](mailto:elt@remax.com.mt)

T: 21344204

**RE/MAX Elite - Sliema**

241, Tower Road, Sliema, Malta