

Apartment in Sliema



Sliema, Sliema and St Julians Surroundings



€4,000

Reference No: 240511001-4165

 Total Rooms: **6**

 Floor Area (m²) : **0**

 Bathrooms: **2**

 Bedrooms: **4**

Apartment - For Rent - Sliema

SLIEMA - Located on the sunny side of Tower Road is this luxury SEAFRONT APARTMENT enjoying stunning views of the picturesque Spinola Bay and the underlying public gardens. Accommodation is bright and spacious, comprising of an entrance hall, a very spacious lounge/sitting/dining room leading onto a sizable front terrace, a separate and fully equipped kitchen/breakfast, four double bedrooms, three bathrooms (two of which are an en-suite), a study, a storage and a laundry room. This property is fully air-conditioned and includes all amenities, as well as an underlying garage space. Viewings are highly recommended!

Features

- ✓ Ceramic Floor
- ✓ En Suite
- ✓ Terrace
- ✓ Video Hall Porter
- ✓ Entrance Hall
- ✓ CCTV

Rooms

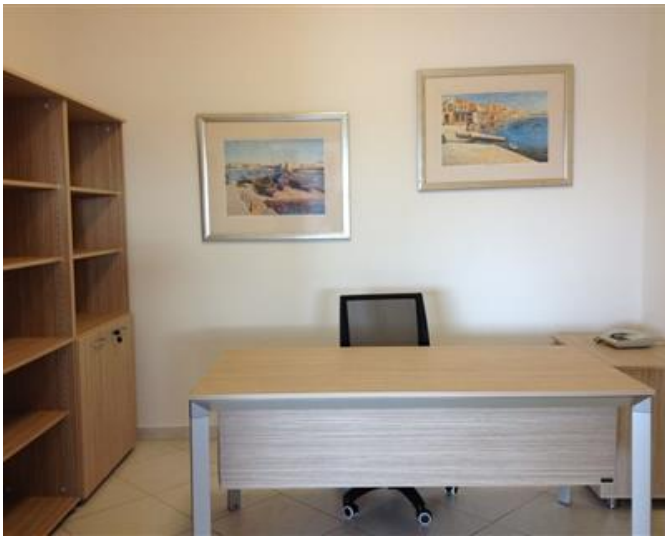
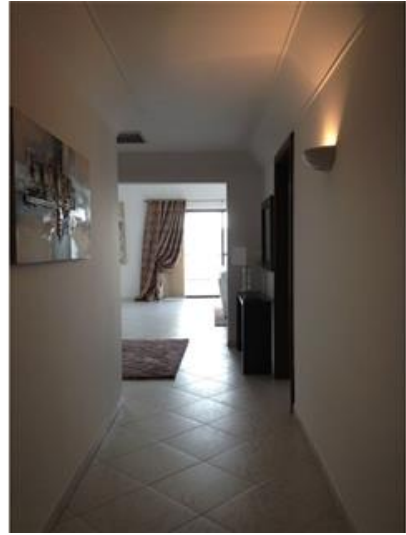
- ✓ Double Bedroom : 0 x 0 m (0 m2)
- ✓ Double Bedroom : 0 x 0 m (0 m2)
- ✓ Double Bedroom : 0 x 0 m (0 m2)
- ✓ Double Bedroom : 0 x 0 m (0 m2)
- ✓ Bathroom : 0 x 0 m (0 m2)
- ✓ Bathroom : 0 x 0 m (0 m2)

Gallery











RE/MAX Elite - Sliema

RE/MAX Elite - Sliema

M: 21344204

E: elt@remax.com.mt

T: 21344204

RE/MAX Elite - Sliema

241, Tower Road, Sliema, Malta