

Apartment in Sliema



Sliema, Sliema and St Julians Surroundings



€2,600

Reference No: 240511001-4140

 Total Rooms: **8**

 Floor Area (m²): **200**

 Bathrooms: **2**

 Bedrooms: **3**

Apartment - For Rent - Sliema

Sliema - A Luxurious, spacious Apartment with sea views. Layout is in the form of a fully equipped open plan kitchen/living/ dining which leads onto A lovely terrace spanning the whole width of the building with a calming view of the Manuel Island . Three bedrooms (main with an en-suite) Walk in wardrobe and a guest Bathroom. Property is being offered fully furnished, fully equipped, fully air-conditioned and ready to move into. Viewings are highly recommended and encouraged.

Features

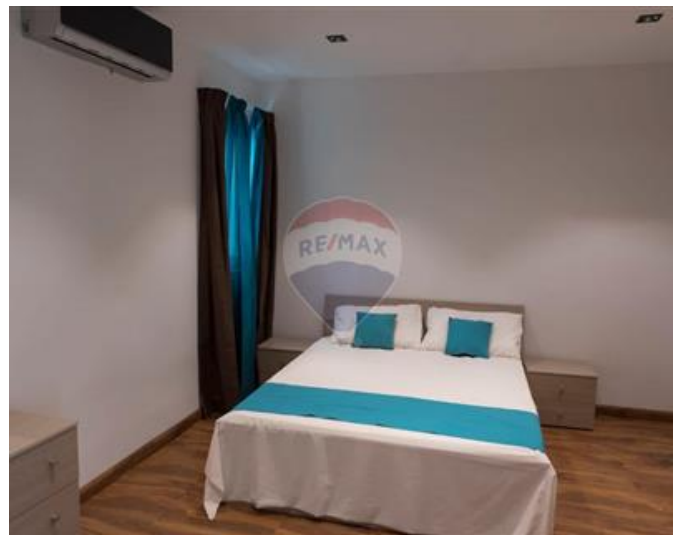
- ✓ Lift
- ✓ En Suite
- ✓ Electricity Utility
- ✓ Towel Warmers
- ✓ Wi-Fi
- ✓ Terrace
- ✓ Kitchen/Dinette
- ✓ Walk in Wardrobe
- ✓ Gypsum Plastering
- ✓ A/C
- ✓ Double Glazed

Rooms

- ✓ Kitchen/Living/Dining : 0 x 0 m (0 m2)
- ✓ Double Bedroom : 0 x 0 m (0 m2)
- ✓ Double Bedroom : 0 x 0 m (0 m2)
- ✓ Single Bedroom : 0 x 0 m (0 m2)
- ✓ Bathroom : 0 x 0 m (0 m2)
- ✓ Shower Ensuite : 0 x 0 m (0 m2)
- ✓ Walk In Wardrobe : 0 x 0 m (0 m2)
- ✓ Box Room : 0 x 0 m (0 m2)

Gallery









RE/MAX Elite - Sliema

RE/MAX Elite - Sliema

M: 21344204

E: elt@remax.com.mt

T: 21344204

RE/MAX Elite - Sliema

241, Tower Road, Sliema, Malta