

# Apartment in Sliema



**Sliema, Sliema and St Julians Surroundings**



**€2,500**

Reference No: 240511001-4101

 Total Rooms: **6**

 Floor Area (m<sup>2</sup>) : **0**

 Bathrooms: **2**

 Bedrooms: **3**

# Apartment - For Rent - Sliema

New on the market. Stylish corner apartment located just off the promenade. Finished to high standards, this property offers a spacious layout and plenty of natural light, comprising of an entrance hall, an open plan kitchen / living / dining area, three bedrooms, three bathrooms (two en suite) and a laundry room. Each bedroom has a balcony and there are four balconies in the living area. Viewings are highly recommended.

## Features

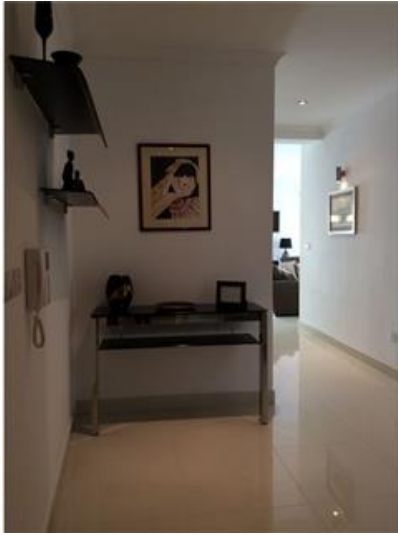
- ✓ Balcony

## Rooms

- ✓ Kitchen/Living/Dining : 0 x 0 m (0 m2)
- ✓ Double Bedroom : 0 x 0 m (0 m2)
- ✓ Double Bedroom : 0 x 0 m (0 m2)
- ✓ Double Bedroom : 0 x 0 m (0 m2)
- ✓ Bathroom : 0 x 0 m (0 m2)
- ✓ Bathroom : 0 x 0 m (0 m2)

# Gallery









**RE/MAX Elite - Sliema**

RE/MAX Elite - Sliema

M: 21344204

E: [elt@remax.com.mt](mailto:elt@remax.com.mt)

T: 21344204

**RE/MAX Elite - Sliema**

241, Tower Road, Sliema, Malta