

Apartment in Sliema



Sliema, Sliema and St Julians Surroundings



€5,500

Reference No: 240511001-3933

 Total Rooms: **6**

 Floor Area (m²) : **0**

 Bathrooms: **3**

 Bedrooms: **3**

Apartment - For Rent - Sliema

Tigne Point-An 8th floor luxury apartment forming part of an exclusive residential development in the heart of this much sought after commercial center. Finished to the highest of standards and enjoying impressive sea and panoramic views over the Valletta bastions, Manoel island and Sliema creek. Accommodation comprises of a welcoming entrance hall, leading to a spacious lounge and formal dining room and a large and fully equipped kitchen / breakfast leading onto a sizable front terrace enjoying the views and having a south facing orientation. Three double bedrooms, two bathrooms (one en suite) and a laundry room / drying area. This stylish property is furnished beautifully and includes all, as well as an underlying garage. The prospective tenant will also benefit from the use of a communal swimming pool. Viewing is an absolute must.

Features

- ✓ Video Hall Porter
- ✓ Entrance Hall
- ✓ Terrace
- ✓ En Suite
- ✓ Pool
- ✓ Balcony

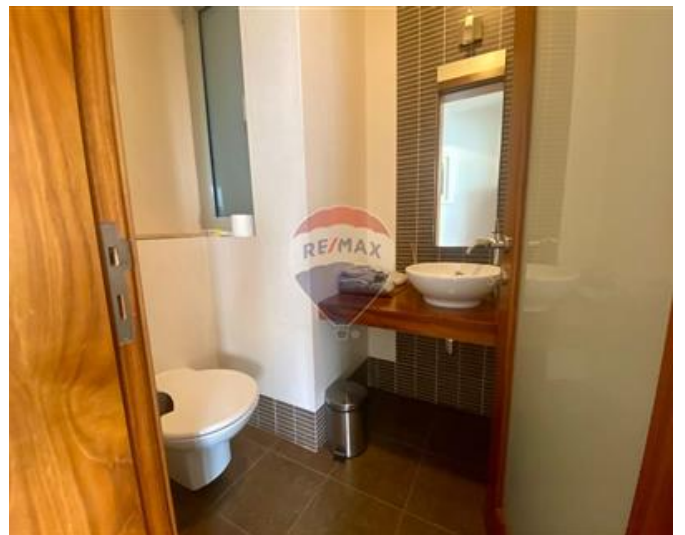
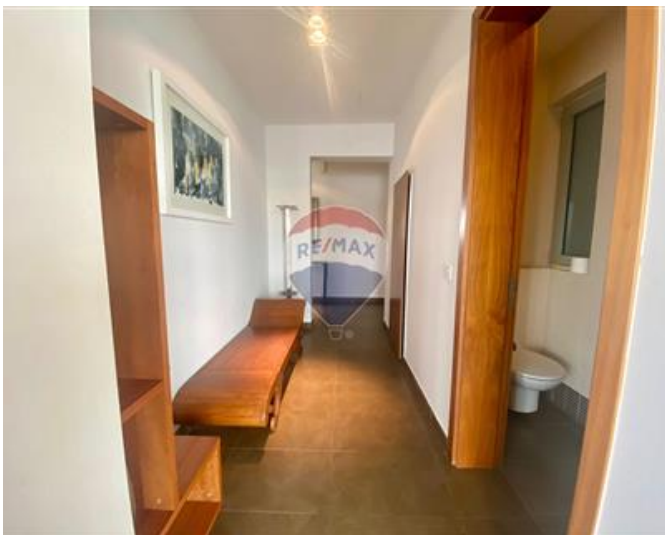
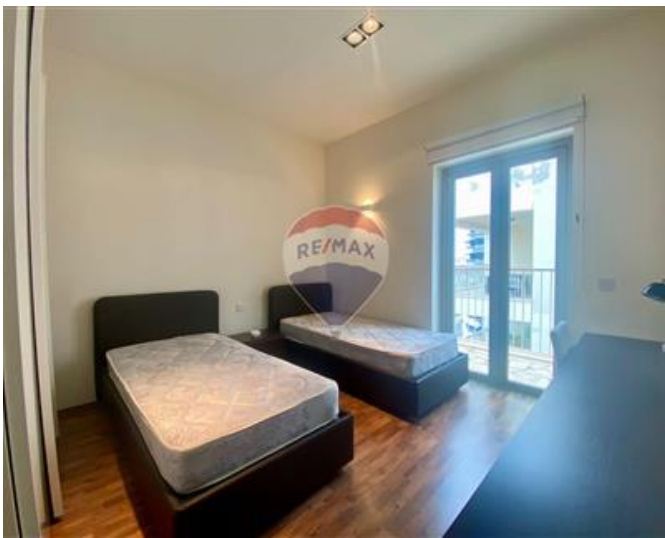
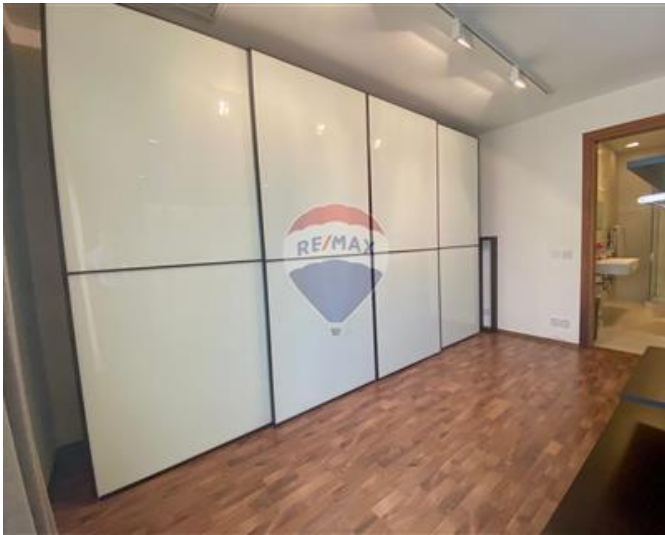
Rooms

- ✓ Double Bedroom : 0 x 0 m (0 m2)
- ✓ Double Bedroom : 0 x 0 m (0 m2)
- ✓ Double Bedroom : 0 x 0 m (0 m2)
- ✓ Bathroom : 0 x 0 m (0 m2)
- ✓ Bathroom : 0 x 0 m (0 m2)
- ✓ Bathroom : 0 x 0 m (0 m2)

Gallery











RE/MAX Elite - Sliema

RE/MAX Elite - Sliema

M: 21344204

E: elt@remax.com.mt

T: 21344204

RE/MAX Elite - Sliema

241, Tower Road, Sliema, Malta