

Penthouse in Swieqi



Swieqi, Sliema and St Julians Surroundings



€1,200

Reference No: 240511001-3919

 Total Rooms: **6**

 Floor Area (m²) : **0**

 Bathrooms: **2**

 Bedrooms: **2**

Penthouse - For Rent - Swieqi

SWIEQI - A modern and fully furnished penthouse. Accommodation comprises of an open plan kitchen/living/dining area, two double bedrooms (main with en-suite shower), a laundry room and guest bathroom. Complimenting this property is a front and back terrace. Great location!

Features

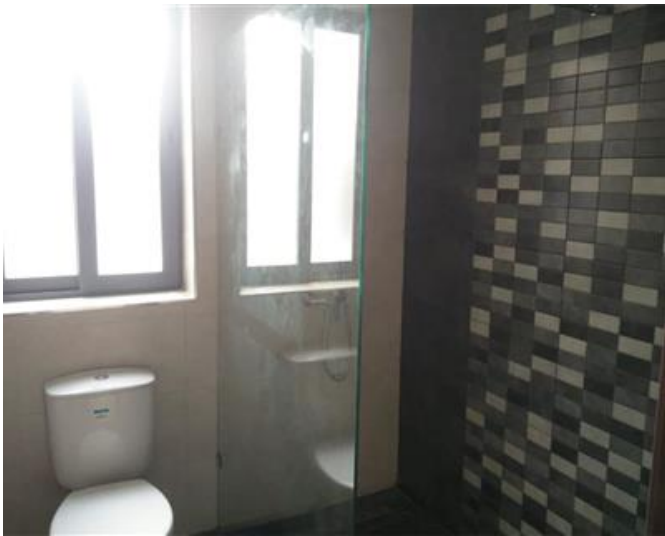
- ✓ Lift
- ✓ A/C
- ✓ Terrace
- ✓ En Suite
- ✓ Double Glazed

Rooms

- ✓ Double Bedroom : 0 x 0 m (0 m2)
- ✓ Double Bedroom : 0 x 0 m (0 m2)
- ✓ Bathroom : 0 x 0 m (0 m2)
- ✓ Bathroom : 0 x 0 m (0 m2)
- ✓ Kitchen/Living/Dining : 0 x 0 m (0 m2)
- ✓ Kitchen/Living/Dining : 0 x 0 m (0 m2)

Gallery







RE/MAX Elite - Sliema

RE/MAX Elite - Sliema

M: 21344204

E: elt@remax.com.mt

T: 21344204

RE/MAX Elite - Sliema

241, Tower Road, Sliema, Malta