

Apartment in Sliema



Sliema, Sliema and St Julians Surroundings



€2,650

Reference No: 240511001-3824

 Total Rooms: **7**

 Floor Area (m²) : **0**

 Bathrooms: **3**

 Bedrooms: **2**

Apartment - For Rent - Sliema

SLIEMA - This stylish, bright and spacious, seafront apartment is located in the heart of this busy commercial centre, minutes away from the shops and cafes. Layout is in the form of an entrance hall, an open plan kitchen/living/dining area with a pantry, leading onto a sizable front terrace, where one can enjoy stunning views of the Valletta bastions, Manoel Island and Sliema creek; two double bedrooms, two bathrooms (one of which is an en-suite) and a guest toilet room. This property is finished to the highest of standards and includes all amenities as well as LCD screens, mood lighting, a washing machine, a tumble dryer and air-conditioning throughout. Underlying parking is optional, at a separate cost. Viewings are highly recommended!

Features

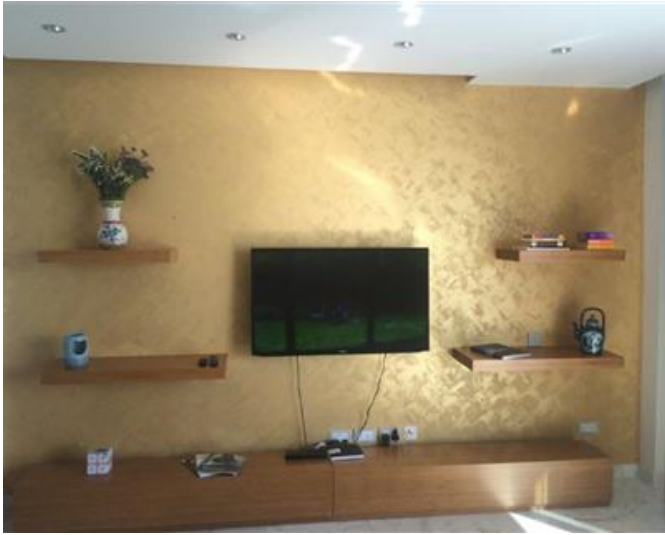
- ✓ Lift
- ✓ En Suite
- ✓ Electricity Utility
- ✓ A/C
- ✓ Intelligent Lighting
- ✓ Terrace
- ✓ Deck
- ✓ Ceramic Floor
- ✓ Entrance Hall
- ✓ Gypsum Plastering
- ✓ Skirting
- ✓ Double Glazed
- ✓ Balcony

Rooms

- ✓ Kitchen/Living/Dining : 0 x 0 m (0 m2)
- ✓ Kitchen Pantry : 0 x 0 m (0 m2)
- ✓ Double Bedroom : 0 x 0 m (0 m2)
- ✓ Double Bedroom : 0 x 0 m (0 m2)
- ✓ Shower Ensuite : 0 x 0 m (0 m2)
- ✓ Bathroom : 0 x 0 m (0 m2)
- ✓ Guest Toilet : 0 x 0 m (0 m2)

Gallery











RE/MAX Elite - Sliema

RE/MAX Elite - Sliema

M: 21344204

E: elt@remax.com.mt

T: 21344204

RE/MAX Elite - Sliema

241, Tower Road, Sliema, Malta