

# Apartment in Sliema



## Sliema, Sliema and St Julians Surroundings



**€1,800**

Reference No: 240511001-3754

 Total Rooms: **6**

 Floor Area (m<sup>2</sup>) : **0**

 Bathrooms: **2**

 Bedrooms: **3**

# Apartment - For Rent - Sliema

SLIEMA - Exceptionally located, seafront apartment enjoying breathtaking sea and Valletta views. Spacious accommodation comprises a large living/dining area leads onto a good sized balcony, fully equipped modern kitchen, a lounge area, three double bedrooms, two bathrooms (one of which is en-suite) and a back balcony. Property is served with a lift, and situated few meters away to Bars, Restaurants, Shops, Beaches, Buses & Valletta Ferry.

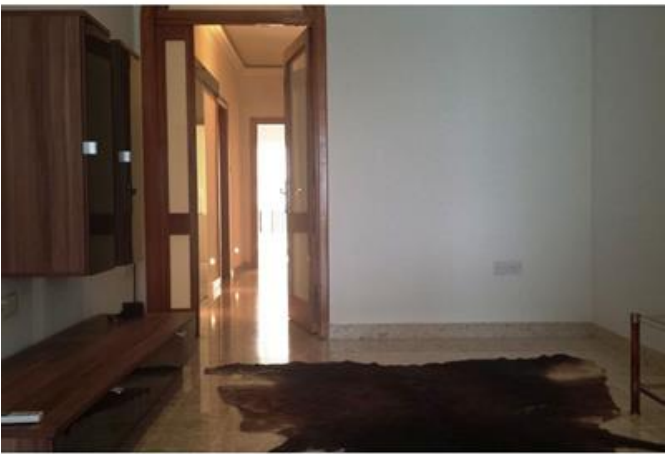
## Features

- ✓ Lift
- ✓ En Suite
- ✓ Skirting
- ✓ Ceramic Floor
- ✓ A/C
- ✓ Balcony

## Rooms

- ✓ Kitchen/Living/Dining : 0 x 0 m (0 m2)
- ✓ Double Bedroom : 0 x 0 m (0 m2)
- ✓ Double Bedroom : 0 x 0 m (0 m2)
- ✓ Double Bedroom : 0 x 0 m (0 m2)
- ✓ Bathroom : 0 x 0 m (0 m2)
- ✓ Bathroom Ensuite : 0 x 0 m (0 m2)

# Gallery







**RE/MAX Elite - Sliema**

RE/MAX Elite - Sliema

M: 21344204

E: [elt@remax.com.mt](mailto:elt@remax.com.mt)

T: 21344204

**RE/MAX Elite - Sliema**

241, Tower Road, Sliema, Malta