

Apartment in Sliema



Sliema, Sliema and St Julians Surroundings



€850

Reference No: 240501005-1077

 Total Rooms: 4

 Floor Area (m²) : 0

 Bathrooms: 1

 Bedrooms: 2

Apartment - For Rent - Sliema

SLIEMA - New modern, spacious apartment exceptionally located providing easy access to a huge variety of local shops, services and amenities. Accommodation comprises an open plan kitchen/lounge/dining, two double bedrooms, bathroom and ample storage space.

Features

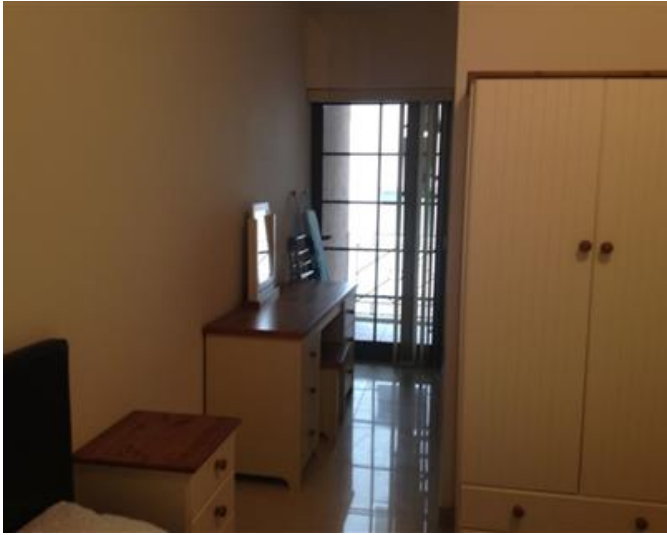
- ✓ Kitchen/Dinette
- ✓ Balcony
- ✓ A/C

Rooms

- ✓ Kitchen/Living/Dining : 0 x 0 m (0 m2)
- ✓ Bathroom : 0 x 0 m (0 m2)
- ✓ Double Bedroom : 0 x 0 m (0 m2)
- ✓ Double Bedroom : 0 x 0 m (0 m2)

Gallery







RE/MAX Landmark - Madliena

RE/MAX Landmark - Madliena

M: 27564327

E: ldm@remax.com.mt

T: 27564327

RE/MAX Landmark - Madliena

47, Triq il-Gladjoli, Madliena, Malta