

Apartment in Pieta



Pieta, Sliema and St Julians Surroundings



€1,100

Reference No: 240491011-266

 Total Rooms: 3

 Floor Area (m²) : 0

 Bathrooms: 1

 Bedrooms: 0

Apartment - For Rent - Pieta

PIETÀ - APARTMENT this brand new, modern, and highly finished 1-bedroom apartment offers stylish and comfortable living in a central and well-connected location. Ideal for individuals or couples, the property combines contemporary design with practical features throughout. The apartment comprises a bright and spacious open-plan kitchen, living, and dining area, designed to maximise natural light and create a welcoming living space. This area leads onto a front balcony, providing a pleasant outdoor extension ideal for relaxation or casual seating. Accommodation includes a well-proportioned double bedroom, which benefits from access to a back balcony, offering additional outdoor space and enhanced ventilation. A modern guest bathroom serves the apartment, finished to a high standard with quality fittings. Finished with attention to detail and designed for modern living, the property offers a fresh and comfortable environment ready for immediate occupancy. Located in Pietà, the apartment enjoys close proximity to all essential amenities, including shops, cafes, public transport, and business hubs, making it an excellent choice for those seeking convenience and accessibility in a prime central area. We highly recommend a viewing, as this exceptional apartment is not to be missed.

Features

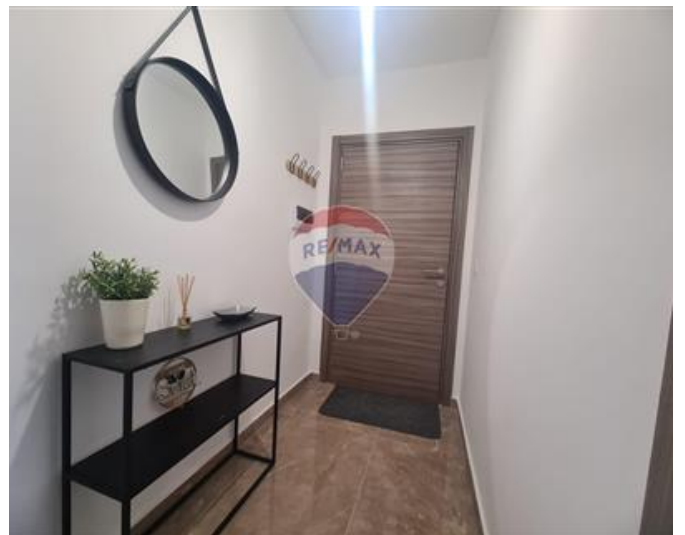
- ✓ Lift
- ✓ A/C

Rooms

- ✓ Kitchen/Living/Dining : 1 x 1 m (1 m2)
- ✓ Bathroom : 1 x 1 m (1 m2)
- ✓ Kitchen/Living/Dining : 1 x 1 m (1 m2)

Gallery









Maria Mifsud

RE/MAX Partners - Fleur De Lys

M: 99111775

E: mariamifsud@remax.com.mt

T: 99467221

RE/MAX Partners - Fleur De Lys

242, , Triq Fleur De Lys, Fleur De Lys, Malta