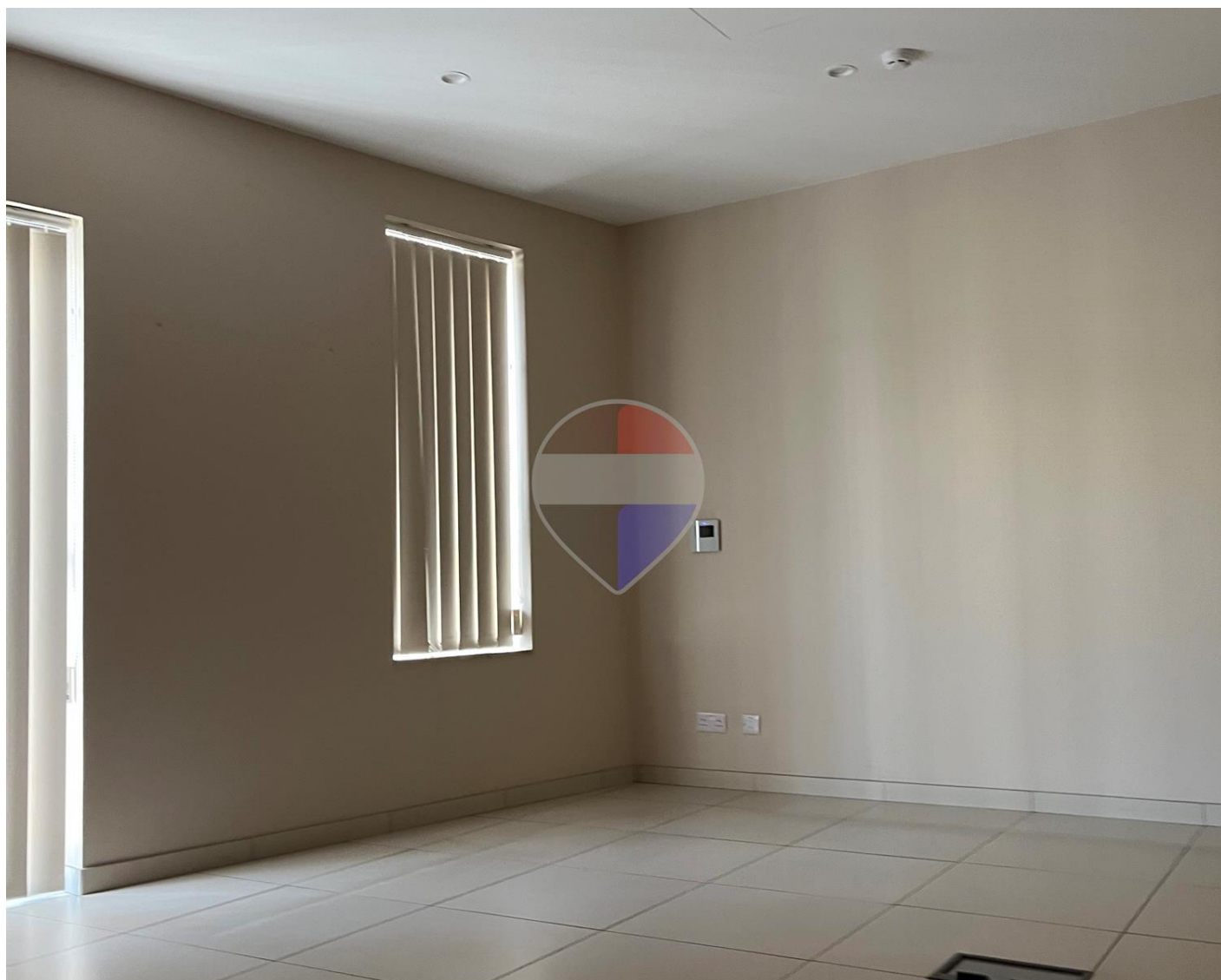


Office Block in Qormi



Qormi, Central



€125,000

Reference No: 240471036-7

 Total Rooms: **0**

 Floor Area (m²): **688**

 Bathrooms: **0**

 Bedrooms: **0**

Office Block - For Rent - Qormi

Qormi – Prime Commercial Office Building A high-calibre commercial asset strategically positioned in Qormi's mixed-use district, offering strong long-term investment potential and flexible occupation options. Investment Highlights • Multi-level office building measuring approx. 688 sqm • Two-level private parking garage accommodating approximately 18 vehicles — a rare advantage in this area • Common entrance, staircase and lift access to all floors • First & Second Floors: Two office wings per level, including dual street frontage on one wing • Penthouse Level: Two office wings with large terraces and full airspace, ideal for premium executive space or future expansion • Located in Qormi, within an established commercial-residential catchment offering excellent connectiv

Features

- ✓ Kitchen/Dinette
- ✓ Entrance Hall
- ✓ Fire Safety
- ✓ Passenger Lift
- ✓ Court Yard
- ✓ Roof Terrace
- ✓ Ceramic Floor
- ✓ Wi-Fi
- ✓ Server Room
- ✓ Terrace
- ✓ Air Space

Rooms

- ✓ Open Space : 25 x 25 m (625 m2)

Gallery







Judith Lyster

RE/MAX Luxe - Sliema

M: 99961926

E: judith@remax.com.mt

T: 27992796

RE/MAX Luxe - Sliema

58, Tigne Seafront, Sliema, Malta