

Maisonette Solitary Triplex in Hamrun



Hamrun, Central



€920,000

Reference No: 240471018-176

 Total Rooms: **11**

 Floor Area (m²) : **300**

 Bathrooms: **4**

 Bedrooms: **5**

Maisonette Solitary Triplex - For Sale - Hamrun

HAMRUN - An exceptional opportunity to acquire a fully renovated 5-bedroom, 7-bathroom modern maisonette spanning 300 sqm and offering an outstanding rental return representing a strong ROI for discerning investors. This property combines elegant contemporary design with traditional Maltese architecture, featuring brand-new plumbing, electrical systems, seven air conditioners, and high-quality finishes throughout. Every detail has been thoughtfully executed—from the wood-look flooring and marble feature walls to the stylish furniture and fittings, all included in the sale. The spacious layout includes bright, open interiors and two beautifully decked roof terraces ideal for entertaining or relaxing while enjoying panoramic city views. Perfectly located within walking distance of shops, cafés, and cultural landmarks, this turnkey property delivers a rare balance of luxury, comfort, and profitability. With its proven income stream, low maintenance requirements, and prime location, this maisonette stands out as a secure, high-yield investment or an exceptional residence ready for immediate occupancy. For more information, feel free to contact us.

Features

- ✓ Ceramic Floor
- ✓ Floors - Hardwood
- ✓ PVC Piping
- ✓ Double Glazed
- ✓ Roof Terrace
- ✓ Entrance Hall
- ✓ Electricity Utility
- ✓ A/C
- ✓ Balcony

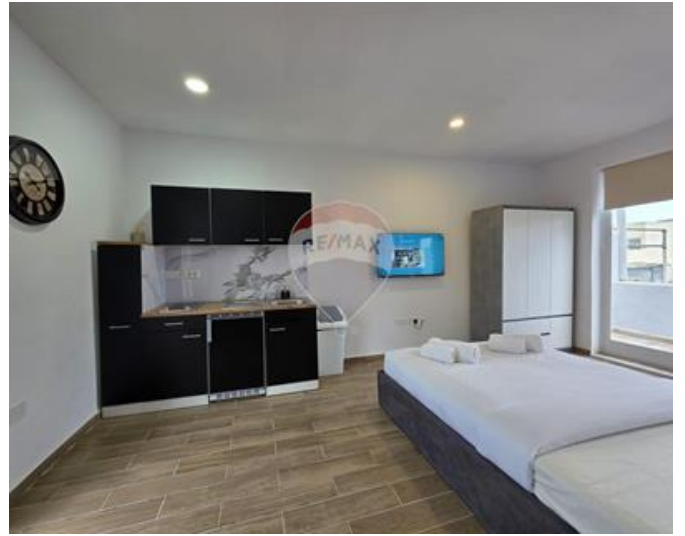
Rooms

- ✓ Double Bedroom : 5 x 3.2 m (16 m2)
- ✓ Guest Toilet : 1.2 x 1.2 m (1.44 m2)
- ✓ Double Bedroom : 3.7 x 3.1 m (11.47 m2)
- ✓ Double Bedroom : 4.5 x 2.5 m (11.25 m2)
- ✓ Bathroom Ensuite : 3.9 x 1.1 m (4.29 m2)
- ✓ Bathroom : 2.4 x 2.5 m (6 m2)

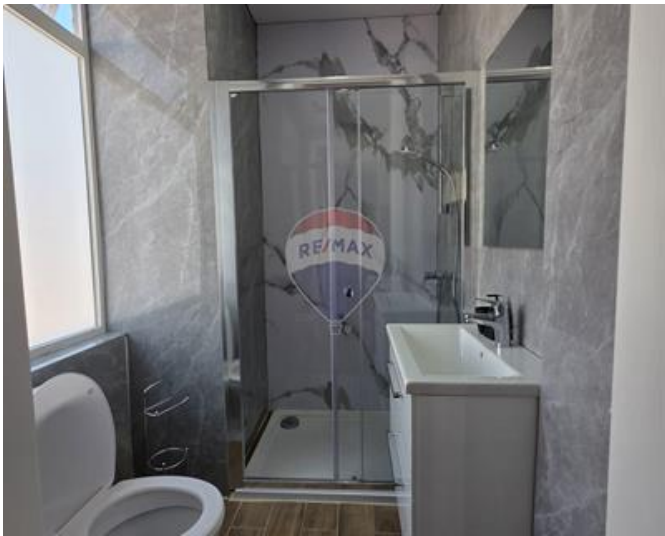
- ✓ Double Bedroom : 4.4 x 2.5 m (11 m²)
- ✓ Double Bedroom : 4.9 x 3.7 m (18.13 m²)
- ✓ Kitchen/Living/Dining : 4.9 x 4.5 m (22.05 m²)
- ✓ Guest Toilet : 1.5 x 1.5 m (2.25 m²)
- ✓ Kitchen/Living/Dining : 4.2 x 3.7 m (15.54 m²)

Gallery











Pablo Andres Madrigal
RE/MAX Luxe - Sliema

M: 77605045
E: pablo@remax.com.mt
T: 27992796

RE/MAX Luxe - Sliema
58, Tigne Seafront, Sliema, Malta