

# Penthouse in Sliema



**Sliema, Sliema and St Julians Surroundings**



**€2,950,000**

Reference No: 240471014-1533

 Total Rooms: **7**

 Floor Area (m<sup>2</sup>) : **213**

 Bathrooms: **2**

 Bedrooms: **3**

# Penthouse - For Sale - Sliema

Sliema Seafront Penthouse Experience exceptional luxury living in this meticulously designed high-end residence, finished and furnished to the highest standards using some of the world's most prestigious brands, including POLYFORM, Miele, EuroCave, DENON, and bespoke pieces by Trends. This stunning property offers two luxurious bedrooms, both with direct terrace access. The master suite features a spacious walk-in wardrobe, an elegant en-suite bathroom, a safe deposit box, custom lighting, electric blinds, and a premium 2m bed. The guest bedroom is equally refined, complete with a 1.80m bed, designer furnishings, decorative lighting, electric blinds, and terrace access. A separate, fully furnished office with a striking stone desk and custom wall unit provides the perfect workspace and is spacious enough to be converted into a third double bedroom if desired. The residence welcomes you through a beautifully panelled corridor incorporating a discreet laundry area with a separate washing machine and dryer. The open-plan POLYFORM kitchen is a masterpiece of design and functionality, fully equipped with top-of-the-line Miele appliances, a EuroCave wine cellar, an integrated water boiler system, and a food compactor. The elegant dining and living areas have been thoughtfully curated with luxury furnishings, designer lighting, custom marble feature walls, hidden storage solutions, and integrated TV installation, creating a sophisticated yet comfortable atmosphere throughout. Outdoor living is equally impressive, with a spectacular terrace furnished to an exceptional standard, featuring premium dining and lounge furniture, waterproof storage, and a large automatic electric canopy, ideal for entertaining in style. A fully equipped high-end BBQ area further enhances the outdoor experience. Additional features include a dramatic marble entrance wall facing the lift lobby and roof space with the potential to accommodate a large whirlpool/jacuzzi. A truly unique residence offering uncompromising quality, refined elegance, and luxurious indoor-outdoor living.

## Features

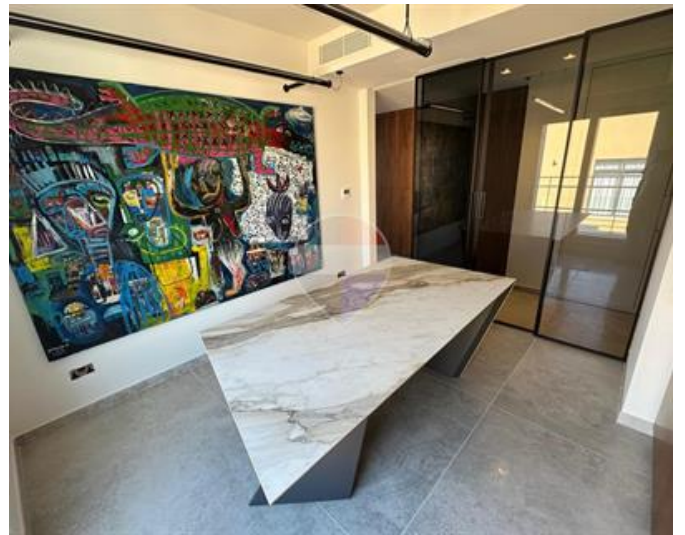
- ✓ Lift
- ✓ En Suite
- ✓ Marble Floor
- ✓ Gypsum Plastering
- ✓ A/C
- ✓ Fire Safety
- ✓ Double Glazed
- ✓ Air Space
- ✓ CCTV
- ✓ Satellite / TV/ Cable
- ✓ Kitchen/Dinette
- ✓ Entrance Hall
- ✓ Electricity Utility
- ✓ PVC Piping
- ✓ Skirting
- ✓ Passenger Lift
- ✓ Terrace
- ✓ Balcony
- ✓ Alarm System

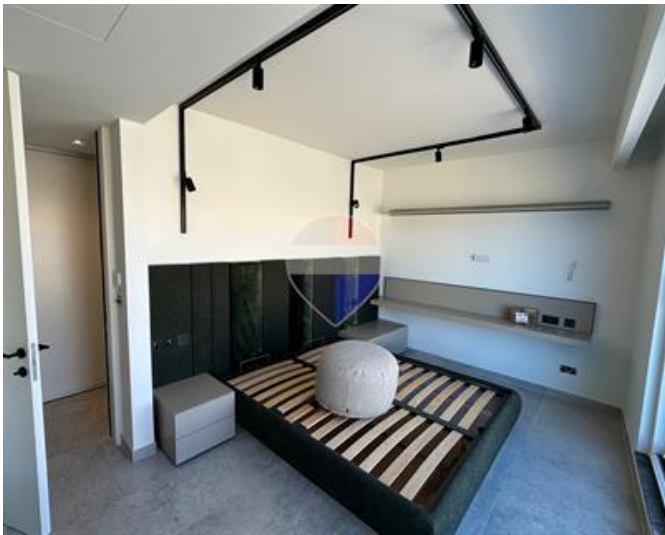
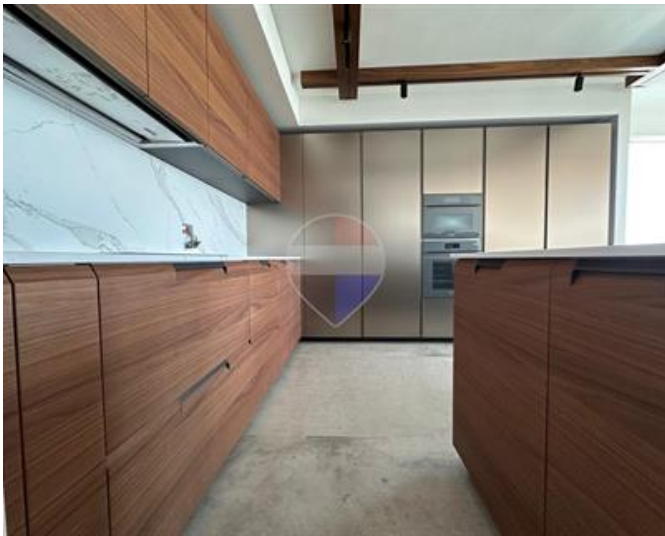
# Rooms

- ✓ Living : 7 x 6 m (42 m<sup>2</sup>)
- ✓ Kitchen : 3 x 3 m (9 m<sup>2</sup>)
- ✓ Open Space : 28 x 11.5 m (322 m<sup>2</sup>)
- ✓ Double Bedroom : 6 x 3.3 m (19.8 m<sup>2</sup>)
- ✓ Bathroom Ensuite : 3.2 x 2.8 m (8.96 m<sup>2</sup>)
- ✓ Double Bedroom : 3.8 x 3 m (11.4 m<sup>2</sup>)
- ✓ Double Bedroom : 3.6 x 3 m (10.8 m<sup>2</sup>)
- ✓ Bathroom : 3 x 2.8 m (8.4 m<sup>2</sup>)

# Gallery











**Mark Micallef**

RE/MAX Luxe - Sliema

M: 99423070

E: [mmicallef@remax.com.mt](mailto:mmicallef@remax.com.mt)

T: 27992796

**RE/MAX Luxe - Sliema**

58, Tigne Seafront, Sliema, Malta