

Townhouse in Sliema




Sliema, Sliema and St Julians Surroundings



€1,590,000

Reference No: 240471014-1348

 Total Rooms: 10

 Floor Area (m²) : 184

 Bathrooms: 2

 Bedrooms: 3

Townhouse - For Sale - Sliema

SLIEMA - Stunning old Townhouse situated in one of Sliema's most attractive, well located, sought after residential streets. This lovely home enjoys high ceilings, beautiful old tiles and a rare-to-come-by four-car street-level inter-connecting garage and can be entered on two roads. Property comprises a charming hallway, sitting/dining /living that leads onto a back terrace, kitchen/breakfast from where one may extend a back terrace, a central courtyard allowing more natural light into this fabulous home, and a guest toilet. The first floor accommodates a spacious master bedroom with en-suite shower and bathroom and a walk-in, and two other comfortable bedrooms, a guest shower room and a laundry/storage room. At roof level - two large rooms that would make an excellent flatlet or entertaining space to complement a roof terrace. Finished in all comfort and detail, property includes a lift from garage to ground floor 12 PV panels, security system, solar panels, A/C, storage, a bathroom in the garage and more. A Truly Wonderful Home!

Features

- ✓ En Suite
- ✓ A/C
- ✓ Court Yard
- ✓ Well
- ✓ Roof Terrace
- ✓ CCTV
- ✓ Satellite / TV/ Cable
- ✓ Entrance Hall
- ✓ Double Glazed
- ✓ Air Space
- ✓ Back Yard
- ✓ Solar Panels
- ✓ Alarm System

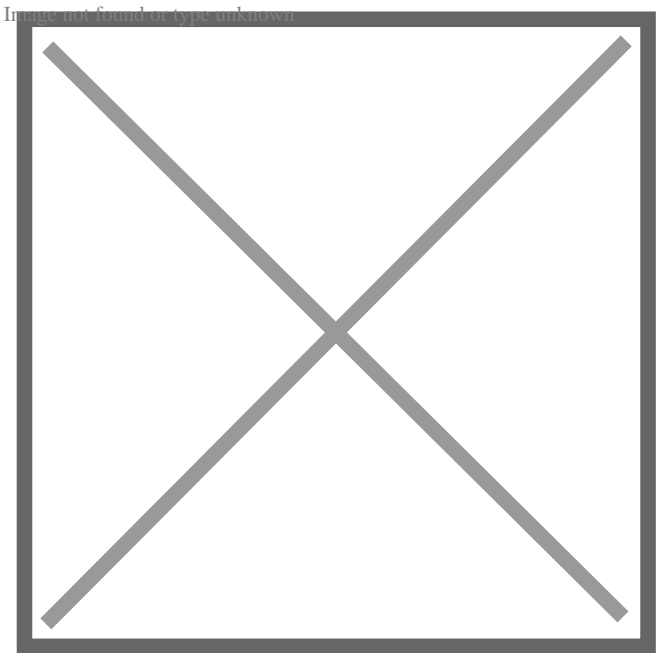
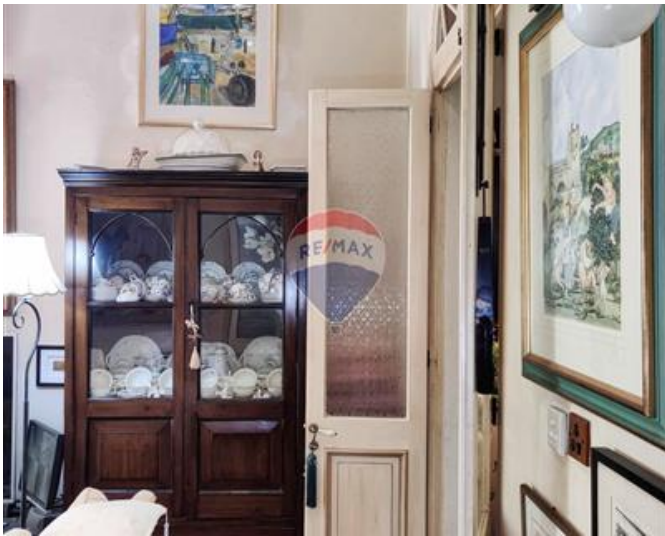
Rooms

- ✓ Hall : 10.55 x 2.6 m (27.43 m2)
- ✓ Sitting/Dining : 8.6 x 3.6 m (30.96 m2)
- ✓ Living : 5.8 x 3.7 m (21.46 m2)
- ✓ Open Space : 3.98 x 2.4 m (9.55 m2)
- ✓ Kitchen : 6.24 x 3.72 m (23.21 m2)
- ✓ Guest Toilet : 2.59 x 0.9 m (2.33 m2)
- ✓ Double Bedroom : 5.3 x 5.5 m (29.15 m2)

- ✓ Shower Ensuite : 3.25 x 2.6 m (8.45 m²)
- ✓ Walk In Wardrobe : 3.9 x 2.8 m (10.92 m²)
- ✓ Hallway : 3.7 x 2 m (7.4 m²)
- ✓ Garage : 9 x 6 m (54 m²)
- ✓ Laundry : 2.5 x 2.8 m (7 m²)
- ✓ Double Bedroom : 6.1 x 3.6 m (21.96 m²)
- ✓ Double Bedroom : 3.6 x 3.36 m (12.1 m²)

Gallery













Mark Micallef

RE/MAX Luxe - Sliema

M: 99423070

E: mmicallef@remax.com.mt

T: 27992796

RE/MAX Luxe - Sliema

58, Tigne Seafront, Sliema, Malta