

Townhouse in Senglea



Senglea, South



€560,000

Reference No: 240471004-345

 Total Rooms: 7

 Floor Area (m²) : 120

 Bathrooms: 2

 Bedrooms: 3

Townhouse - For Sale - Senglea

A charming Townhouse in the heart of Senglea. A unique property awaits you with tons of charm and character featuring high ceilings plus hand-crafted solid oak woodwork and stonework throughout. This property has plenty of natural light streaming through huge windows throughout and also features two traditional Maltese balconies. Once entering and accessing a gorgeous flight of granite stairs, one finds 2 large rooms, one of which has wooden beams, and an oak and granite kitchen with reverse osmosis. This room is ideal as a kitchen/living/room. The other large room on this level features a gorgeous stone bar and a ensuite toilet. This room is currently being used as a large bedroom. The main, sweeping staircase is stunning and features a beautifully crafted railing and granite steps as well as a stained glass skylight. On the first floor one finds a huge master bedroom with a traditional Maltese balcony, wooden beams and beautiful hand-crafted stonework. Three more rooms are also found on this level, another huge bedroom which could also be used as a living area, plus a bathroom and a charming kitchenette. Going up the marble stairs to the third level one finds a huge kitchen/diner with plenty of cupboard space and countertops, a large bathroom and a gorgeous sunroom, where you can soak up the sun year round, overlooking the roof terrace. If you would like to have a sea view that can easily be done by creating access and a seating area on the top roof. This property has oodles of features and must be seen to be appreciated. Freehold and ownership of airspace

Features

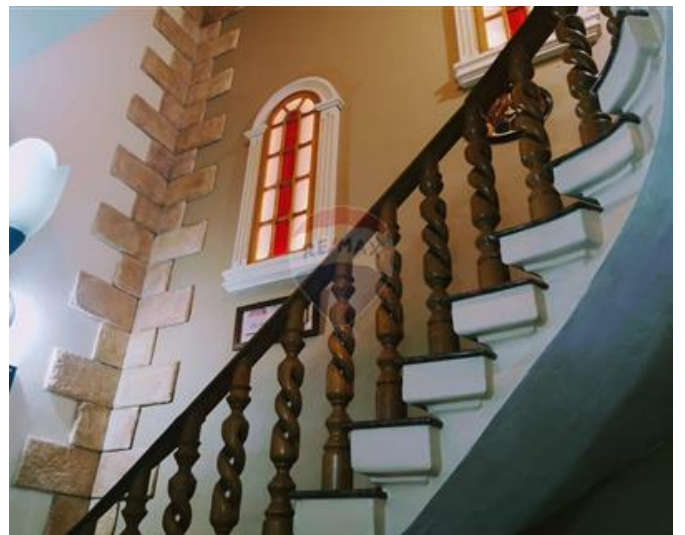
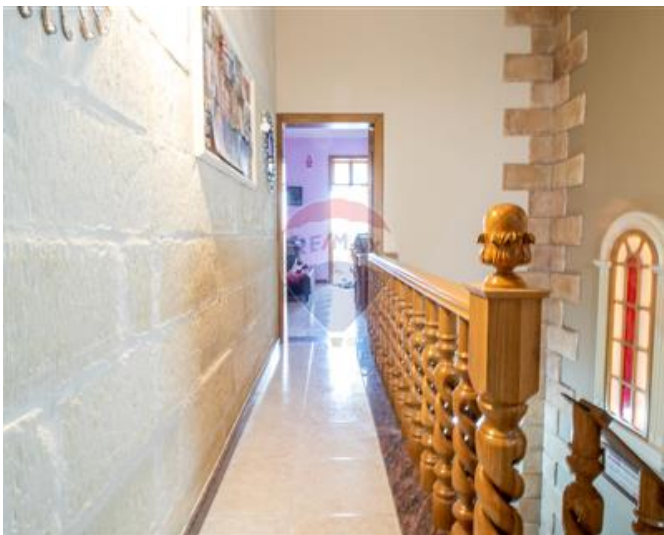
- ✓ Water Utility
- ✓ Electricity Utility
- ✓ Terrace
- ✓ Balcony

Rooms

- ✓ Kitchen : 2 x 5 m (10 m²)
- ✓ Kitchen/Dining : 4 x 6 m (24 m²)
- ✓ Double Bedroom : 4.1 x 6.2 m (25.42 m²)
- ✓ Double Bedroom : 4.11 x 6 m (24.66 m²)
- ✓ Double Bedroom : 3.9 x 5.8 m (22.62 m²)
- ✓ Bathroom : 3 x 3.3 m (9.9 m²)
- ✓ Bathroom : 3 x 4 m (12 m²)

Gallery











Anna Cirrincione

RE/MAX Luxe - Sliema

M: 99962506

E: acirrincione@remax.com.mt

T: 27992796

RE/MAX Luxe - Sliema

58, Tigne Seafront, Sliema, Malta