

# Apartment in Kalkara



**Kalkara, South**



**€790,000**

Reference No: 240471004-293

 Total Rooms: 4

 Floor Area (m<sup>2</sup>) : 160

 Bathrooms: 2

 Bedrooms: 1

# Apartment - For Sale - Kalkara

THE SHORELINE, KALKARA – APARTMENT on Level 5 having an internal 121sqm and 29sqm external, this 2 bedrooms in block A with sea views is sold highly finished including bathrooms and internal doors. The Shoreline is a new development located next to Smart City in the south of Malta enjoying a balanced mix of differently sized and well laid-out units, overlying a 30-outlet shopping mall. This is a unique seafront location overlooking the crystal clear, azure Mediterranean sea. The Shoreline offers an unparalleled mix of luxury accommodation, superb views and community amenities right outside your door. Exclusive to the residents, one finds a large pool called the Laguna and a health club with its own pool. Located in a safe and access-controlled environment, literally a few steps away from the water's edge, The Shoreline adopts a philosophy of luxury living and convenience where every daily need is easily accessible. viewing recommended

## Features

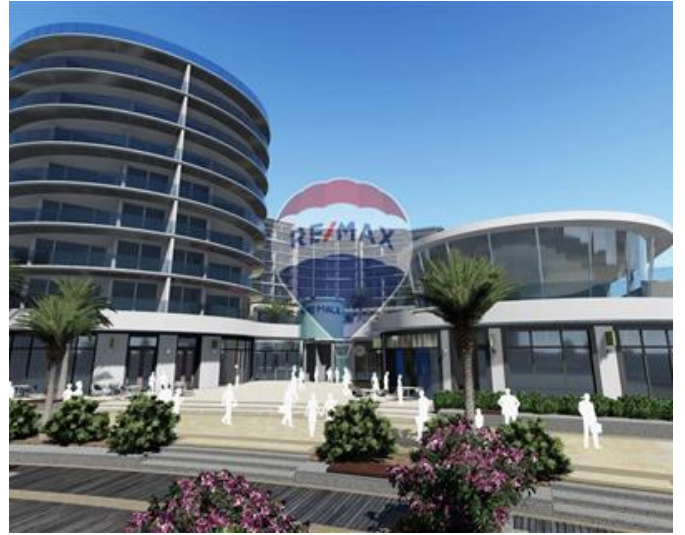
- ✓ Natural Gas
- ✓ Electricity Utility
- ✓ 3 Phase Electricity
- ✓ Skirting
- ✓ Wi-Fi
- ✓ Balcony
- ✓ CCTV
- ✓ Satellite / TV/ Cable
- ✓ Ceramic Floor
- ✓ PVC Piping
- ✓ A/C
- ✓ Intelligent Lighting
- ✓ Cold Room
- ✓ Waste Room
- ✓ Alarm System
- ✓ Generators

## Rooms

- ✓ Double Bedroom : 4.5 x 3.1 m (13.95 m2)
- ✓ Bathroom : 2.4 x 1.8 m (4.32 m2)
- ✓ Kitchen/Living/Dining : 9.8 x 5 m (49 m2)
- ✓ Shower Ensuite : 0.9 x 3 m (2.7 m2)

# Gallery









**Anna Cirrincione**

RE/MAX Luxe - Sliema

M: 99962506

E: [acirrincione@remax.com.mt](mailto:acirrincione@remax.com.mt)

T: 27992796

**RE/MAX Luxe - Sliema**

58, Tigne Seafront, Sliema, Malta