

Townhouse in Sliema



Sliema, Sliema and St Julians Surroundings



€1,450,000

Reference No: 240471004-268

 Total Rooms: 16

 Floor Area (m²) : 410

 Bathrooms: 4

 Bedrooms: 7

Townhouse - For Sale - Sliema

Sliema, a three storey townhouse situated in one of the best parts of Sliema. This beautiful home combines classical features with modern appliances. Its layout consists of a street level interconnecting car garage, a large separate kitchen, dining room and courtyard. The sleeping quarters are found on the first floor with three bedrooms and a south facing terrace. On the second floor one finds three more bedrooms with an connecting terrace. On the third floor there is an entertaining room with an ample terrace. This stunning property is ideal as a residence, three apartments or a boutique hotel. Proposed plans ready for this home to be converted into three apartments served with a lift and the opportunity to extend and add two more floors. Freehold

Features

- ✓ Natural Gas
- ✓ Ceramic Floor
- ✓ En Suite
- ✓ Entrance Hall
- ✓ Perlato Floor
- ✓ Soffit Ceilings
- ✓ PVC Piping
- ✓ A/C
- ✓ Wi-Fi
- ✓ Air Space
- ✓ Back Yard
- ✓ Front Patio
- ✓ Alarm System
- ✓ Kitchen/Dinette
- ✓ Tiled Stove
- ✓ Walk in Wardrobe
- ✓ Marble Floor
- ✓ Electricity Utility
- ✓ Gypsum Plastering
- ✓ 3 Phase Electricity
- ✓ Skirting
- ✓ Double Glazed
- ✓ Balcony
- ✓ Garden
- ✓ CCTV
- ✓ Generators

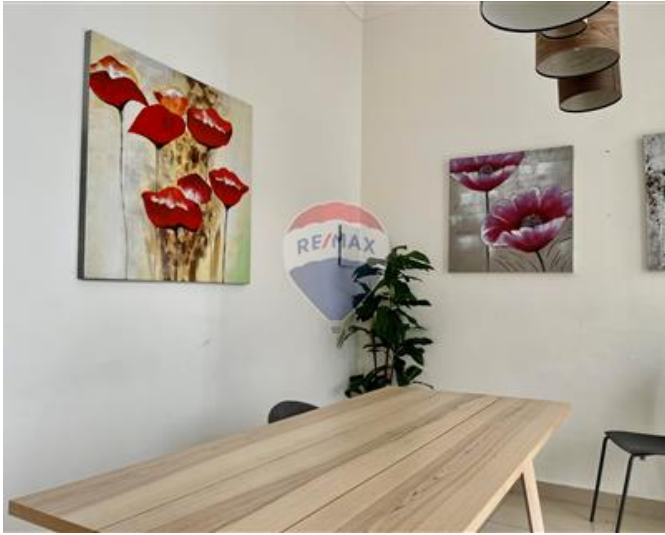
Rooms

- ✓ Double Bedroom : 2.81 x 4 m (11.26 m2)
- ✓ Double Bedroom : 2.63 x 4 m (10.55 m2)
- ✓ Double Bedroom : 2.63 x 4 m (10.55 m2)

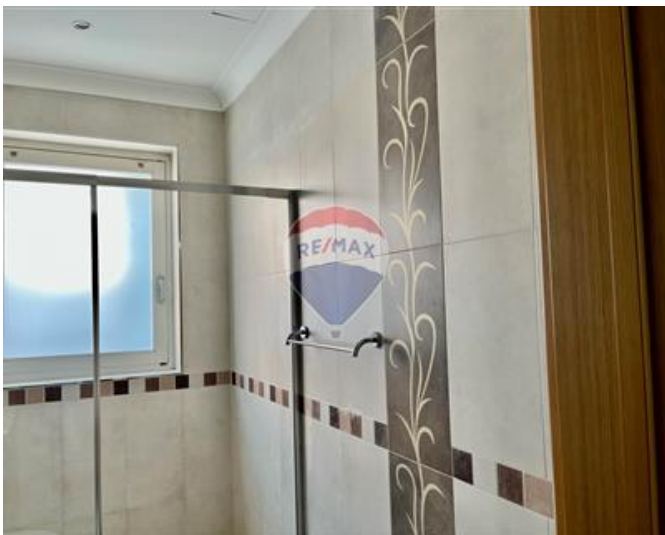
- ✓ Double Bedroom : 3.2 x 2.8 m (8.96 m²)
- ✓ Double Bedroom : 3.1 x 2.8 m (8.68 m²)
- ✓ Double Bedroom : 3.5 x 2.8 m (9.8 m²)
- ✓ Double Bedroom : 3.5 x 2.8 m (9.8 m²)
- ✓ Living : 5.5 x 3 m (16.5 m²)
- ✓ Laundry : 2.56 x 2.8 m (7.19 m²)
- ✓ Open Space : 8.08 x 3.12 m (25.24 m²)
- ✓ Bathroom : 1.6 x 2.75 m (4.41 m²)
- ✓ Bathroom : 1.58 x 4.18 m (6.63 m²)
- ✓ Bathroom Ensuite : 1.15 x 3.45 m (4.01 m²)
- ✓ Bathroom Ensuite : 1.26 x 2.18 m (2.76 m²)
- ✓ Walk In Wardrobe : 1.53 x 2.97 m (4.58 m²)
- ✓ Kitchen : 3.45 x 3.39 m (11.71 m²)
- ✓ Dining : 5.37 x 3.15 m (16.94 m²)
- ✓ Garage : 4.65 x 5.33 m (24.78 m²)

Gallery













Anna Cirrincione

RE/MAX Luxe - Sliema

M: 99962506

E: acirrincione@remax.com.mt

T: 27992796

RE/MAX Luxe - Sliema

58, Tigne Seafront, Sliema, Malta