

Apartment in Swieqi



Swieqi, Sliema and St Julians Surroundings



€1,300

Reference No: 240461001-509

 Total Rooms: **6**

 Floor Area (m²) : **180**

 Bathrooms: **2**

 Bedrooms: **2**

Apartment - For Rent - Swieqi

Swieqi – Located just moments from the Intercontinental Hotel and St. George's Bay, this bright corner apartment features a wraparound balcony with distant sea views. The property offers a spacious living and dining area, a separate kitchen with a breakfast nook, 2 bedrooms, and 2 bathrooms. Residents enjoy complimentary access to the communal pool and first-come, first-served parking. Fully air-conditioned and fitted with modern appliances, including a dishwasher, this apartment is conveniently close to all daily amenities.

Features

- ✓ Lift
- ✓ Ceramic Floor
- ✓ En Suite
- ✓ Parquet Floor
- ✓ A/C
- ✓ Double Glazed
- ✓ Balcony
- ✓ Waste Room
- ✓ Kitchen/Dinette
- ✓ Video Hall Porter
- ✓ Entrance Hall
- ✓ Soffit Ceilings
- ✓ Skirting
- ✓ Pool
- ✓ Pool Deck
- ✓ CCTV

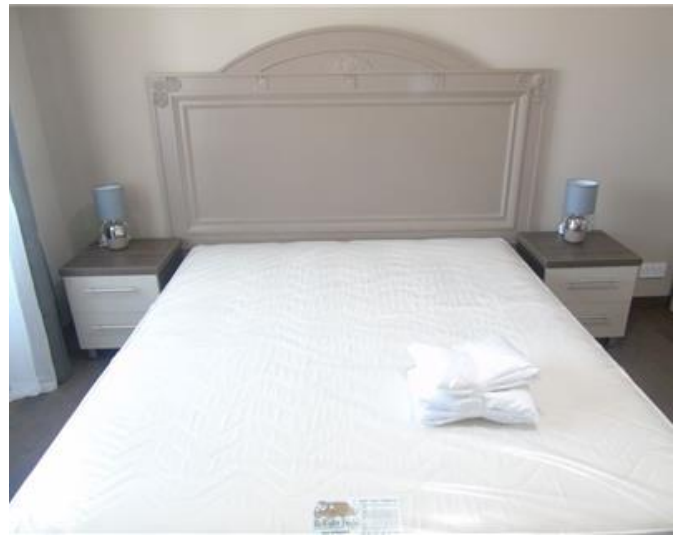
Rooms

- ✓ Living/Dining : 0 x 0 m (0 m2)
- ✓ Kitchen : 0 x 0 m (0 m2)
- ✓ Double Bedroom : 0 x 0 m (0 m2)
- ✓ Double Bedroom : 0 x 0 m (0 m2)
- ✓ Bathroom : 0 x 0 m (0 m2)
- ✓ Shower Ensuite : 0 x 0 m (0 m2)

Gallery















RE/MAX Professionals - Mosta
RE/MAX Professionals - Mosta

M: 27998977

E: mosta@remax.com.mt

T: 27998977

RE/MAX Professionals - Mosta
24, Vjal L-Indipendenza, Mosta, Malta