

Apartment in Sliema



Sliema, Sliema and St Julians Surroundings



€2,500

Reference No: 240461001-291

 Total Rooms: **8**

 Floor Area (m²) : **0**

 Bathrooms: **4**

 Bedrooms: **2**

Apartment - For Rent - Sliema

Sliema – Luxury Seafront Apartment - Enjoy spectacular views of the Valletta Bastions, Manoel Island, and Sliema Creek from this bright and spacious seafront apartment. The accommodation includes a fully equipped kitchen, a large open-plan living and dining area opening onto a front terrace, 2 double bedrooms (main with en suite bathroom and walk-in wardrobe), and a separate guest bathroom. Finished to the highest standards, this apartment includes all modern amenities. An optional car space is also available. Viewings are highly recommended.

Features

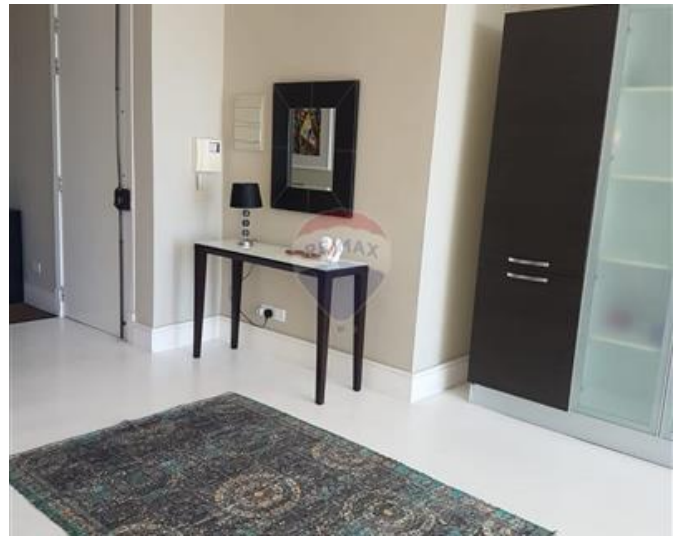
- ✓ Entrance Hall
- ✓ Terrace
- ✓ Balcony
- ✓ CCTV

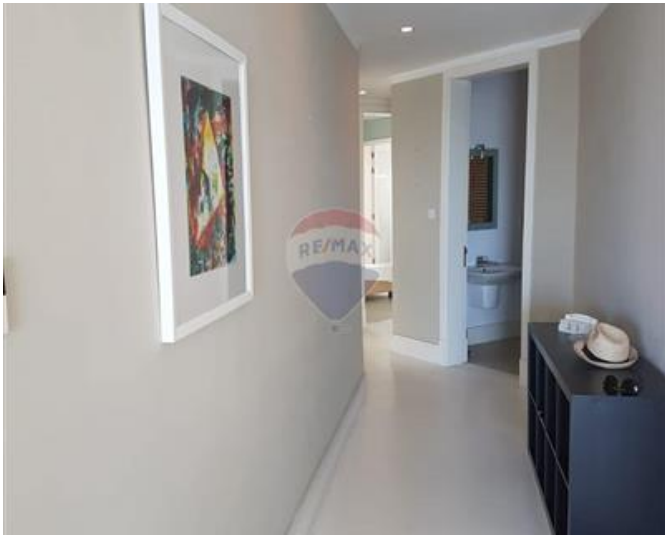
Rooms

- ✓ Living/Dining : 0 x 0 m (0 m2)
- ✓ Kitchen : 0 x 0 m (0 m2)
- ✓ Single Bedroom : 0 x 0 m (0 m2)
- ✓ Single Bedroom : 0 x 0 m (0 m2)
- ✓ Bathroom : 0 x 0 m (0 m2)
- ✓ Bathroom : 0 x 0 m (0 m2)
- ✓ Bathroom : 0 x 0 m (0 m2)
- ✓ Bathroom : 0 x 0 m (0 m2)

Gallery









RE/MAX Professionals - Mosta
RE/MAX Professionals - Mosta

M: 27998977

E: mosta@remax.com.mt

T: 27998977

RE/MAX Professionals - Mosta
24, Vjal L-Indipendenza, Mosta, Malta