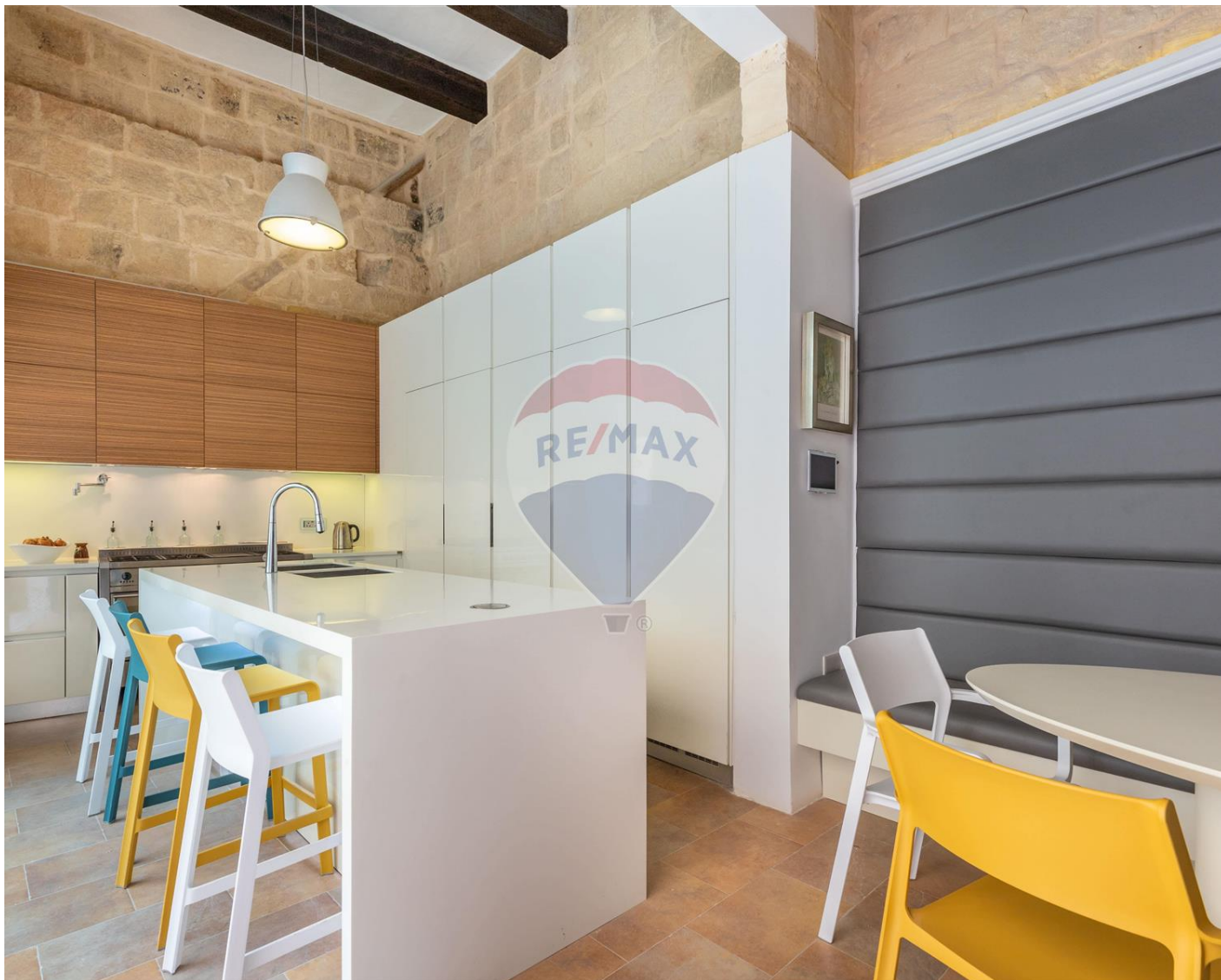


Palazzo in Zejtun



Zejtun, South



€6,500

Reference No: 240391017-207

 Total Rooms: **12**

 Floor Area (m²) : **0**

 Bathrooms: **6**

 Bedrooms: **4**

Palazzo - For Rent - Zejtun

Old meets new in this high luxury, imposing, double-fronted corner 17th Century Palazzo, which has been converted to 5 star hotel standard. Set in the heart of the picturesque village of Zejtun, this Palazzo offers rich historical features from past times including marble floors, traditional flagstone tiles & hand crafted patterned tiles. A welcoming arched entrance hall faces a good-sized central courtyard featuring a heated spa pool which is overlooked by an open plan modern Veneta Kitchen & casual all-day dining room. Adjacent to the entrance hall is a very large living room with a gas fire place overlooking the Spa Pool and a Guest Bathroom. On the lateral side of the entrance hall, one finds a stylish dining room and an additional guest toilet. A Panoramic lift overlooking the courtyard serves the entire property. On the first floor, one finds four fully furnished En-suite Bedrooms. The luxurious master bedroom suite has a traditional Maltese balcony, en-suite bathroom, recessed large wardrobe and additional walk in wardrobe. A corner double bedroom enjoys traditional Maltese handcrafted tiles with its own en-suite. A Third double bedroom with en-suite enjoys a large terrace overlooking one of the village core alleys of Zejtun. The Fourth Bedroom is setup as a Study with its own sofa bed & en-suite bathroom & wardrobe. On the rooftop level, one finds a second modern kitchen with fitted laundry appliances and additional fridge and freezer storage. This leads to an entertainment roof garden equipped with raised wooden decking, drip irrigation, ideal for summer barbecues. An additional lounge roof with a retractable canopy enjoys views of Malta. The Palazzo has very generous proportions, is very energy efficient, with powered led lights throughout, solar panels, thermal double glazed insulated windows, roof insulation, water well for second class water, and solar water heating. Included in the property is a huge arched cellar with authentic wood fireplace leading to a 4-room war shelter. Other features: Photo voltaic solar panels, VRV Invertor Air-conditioning throughout, Bose music entertainment system installation, Security & CCTV Installations, CAT6 WIFI configuration throughout.

Features

- ✓ En Suite
- ✓ Pool
- ✓ Deck
- ✓ Walk in Wardrobe
- ✓ Well

Rooms

- ✓ Bathroom Ensuite : 0 x 0 m (0 m2)
- ✓ Single Bedroom : 0 x 0 m (0 m2)
- ✓ Single Bedroom : 0 x 0 m (0 m2)
- ✓ Single Bedroom : 0 x 0 m (0 m2)

- ✓ Dining : 0 x 0 m (0 m2)
- ✓ Living : 0 x 0 m (0 m2)
- ✓ Single Bedroom : 0 x 0 m (0 m2)
- ✓ Bathroom : 0 x 0 m (0 m2)
- ✓ Bathroom : 0 x 0 m (0 m2)
- ✓ Bathroom : 0 x 0 m (0 m2)
- ✓ Bathroom : 0 x 0 m (0 m2)
- ✓ Bathroom : 0 x 0 m (0 m2)

Gallery











Malcolm Caruana

RE/MAX Lettings - Crown

M: 79328343

E: malcolm@remaxcrown.com

T: 20107480

RE/MAX Lettings - Crown

169, Tower Road , Sliema, Malta