

Apartment in Sliema



Sliema, Sliema and St Julians Surroundings



€6,500

Reference No: 240351050-4968

 Total Rooms: **6**

 Floor Area (m²) : **0**

 Bathrooms: **3**

 Bedrooms: **3**

Apartment - For Rent - Sliema

Right in the heart of Sliema is this state of the art 6th floor apartment boasting views of Valletta bastions Manuel Island and the creek from it's terraces all around. A massive living / dining / kitchen welcomes you as you walk in leading on to two spacious terraces enjoying the views, all the bedrooms are doubles two of which come with en suite bath / shower and a separate terrace each, a good sized laundry room with more storage space and an authentic Swedish sauna combines with the neat and elegant interior of this property includes a built in safe also a wine cooler among other luxuries reflecting a sense of style and comfort throughout. A one off!

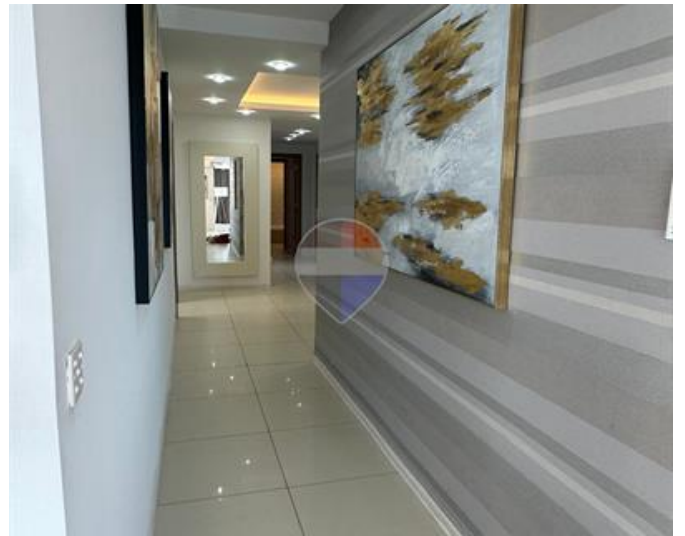
Features

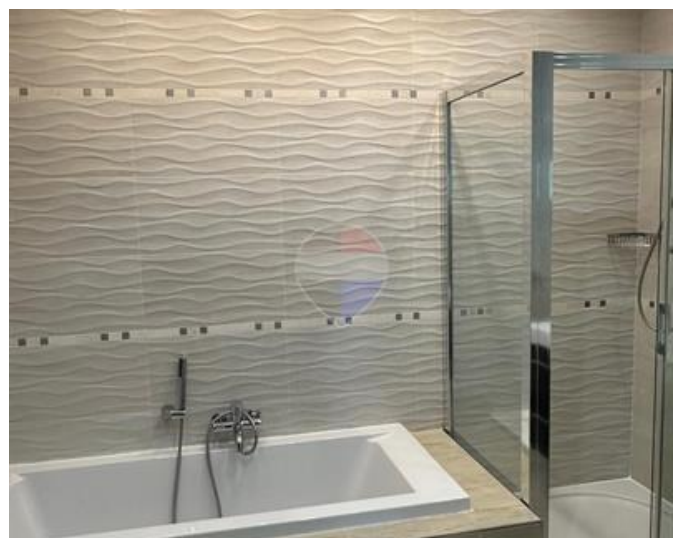
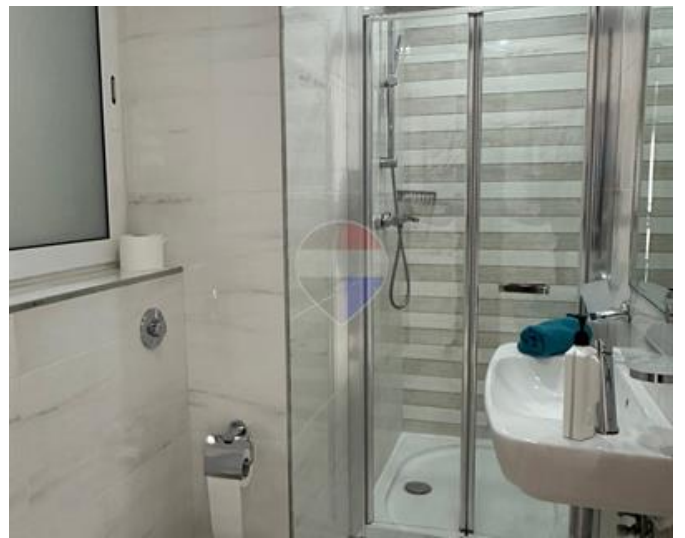
Rooms

- ✓ Double Bedroom : 0 x 0 m (0 m2)
- ✓ Double Bedroom : 0 x 0 m (0 m2)
- ✓ Double Bedroom : 0 x 0 m (0 m2)
- ✓ Bathroom : 0 x 0 m (0 m2)
- ✓ Bathroom : 0 x 0 m (0 m2)
- ✓ Bathroom : 0 x 0 m (0 m2)

Gallery











RE/MAX Malta - BDV Letting

RE/MAX Malta - BDV

M: 22471300

E: info@remax.com.mt

T: 22471300

RE/MAX Malta - BDV

29, Realco Building, Level 1, ,Achille Ferris Street , Msida, Malta