

Apartment in Sliema



Sliema, Sliema and St Julians Surroundings



€0

Reference No: 240351050-12111

 Total Rooms: 10

 Floor Area (m²) : 0

 Bathrooms: 4

 Bedrooms: 4

Apartment - For Rent - Sliema

TIGNE POINT - An absolutely stunning APARTMENT, forming part of the most recent residential block of this exclusive up-market development. Boasting an impressive overall floor area of 330SqM and enjoying amazing views of Valletta, Marsamxetto harbour and the open sea. Having bright accommodation in the form of a wide entrance lobby leading onto a fabulous open plan living / dining, separate kitchen / breakfast with pantry / washroom, large terrace and a guest bathroom. Sleeping quarters include a main bedroom with an en-suite, a spacious walk-in wardrobe and three double bedrooms (one including a second large terrace). Property is being offered with high standard designer finishes. Further complimenting this exclusive property is a two car lock-up garage. Must be seen!

Features

- ✓ Video Hall Porter
- ✓ Entrance Hall
- ✓ Terrace
- ✓ En Suite
- ✓ Pool

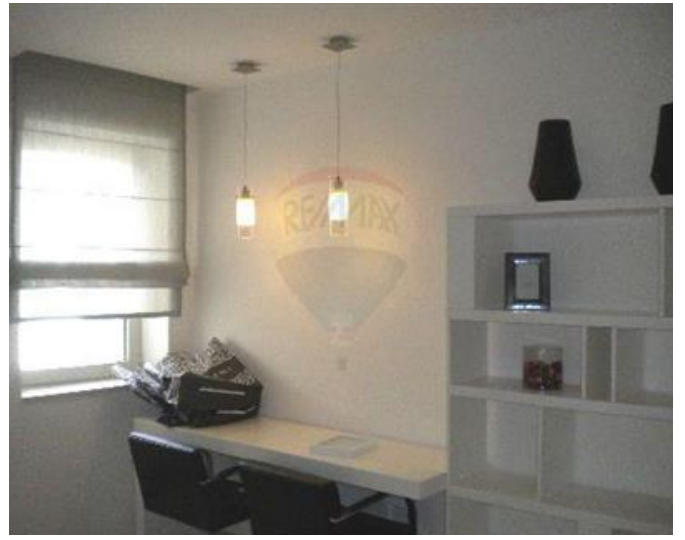
Rooms

- ✓ Double Bedroom : 0 x 0 m (0 m2)
- ✓ Double Bedroom : 0 x 0 m (0 m2)
- ✓ Double Bedroom : 0 x 0 m (0 m2)
- ✓ Living/Dining : 0 x 0 m (0 m2)
- ✓ Bathroom Ensuite : 0 x 0 m (0 m2)
- ✓ Bathroom Ensuite : 0 x 0 m (0 m2)
- ✓ Bathroom : 0 x 0 m (0 m2)
- ✓ Double Bedroom : 0 x 0 m (0 m2)
- ✓ Guest Toilet : 0 x 0 m (0 m2)
- ✓ Kitchen : 0 x 0 m (0 m2)

Gallery











RE/MAX Malta - BDV Letting

RE/MAX Malta - BDV

M: 22471300

E: info@remax.com.mt

T: 22471300

RE/MAX Malta - BDV

29, Realco Building, Level 1, ,Achille Ferris Street , Msida, Malta