

Penthouse in Swieqi



Swieqi, Sliema and St Julians Surroundings



€1,750

Reference No: 240351050-11785

 Total Rooms: **4**

 Floor Area (m²) : **0**

 Bathrooms: **2**

 Bedrooms: **2**

Penthouse - For Rent - Swieqi

SWIEQI - A fully furnished, modern penthouse, situated close to all amenities. Layout is in the form of an open plan kitchen/living/dining, a guest bathroom, two double bedrooms, an en-suite, and front and back terraces. Property is served with lift and includes optional garages.

Features

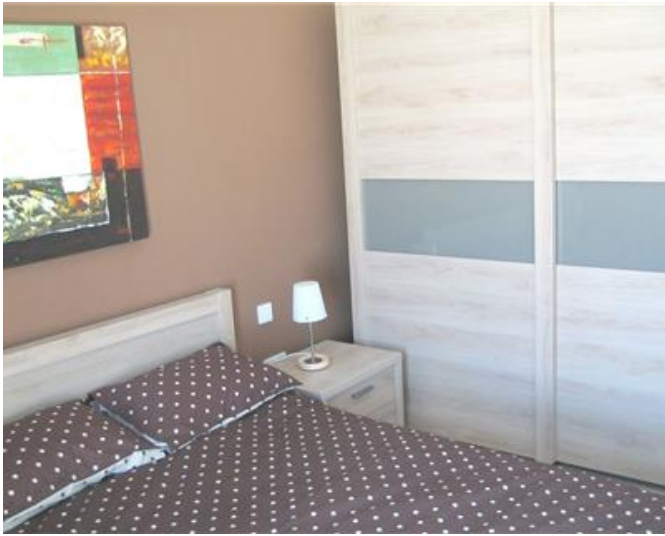
- ✓ Lift
- ✓ En Suite
- ✓ Terrace
- ✓ Kitchen/Dinette
- ✓ A/C

Rooms

- ✓ Double Bedroom : 0 x 0 m (0 m2)
- ✓ Double Bedroom : 0 x 0 m (0 m2)
- ✓ Bathroom : 0 x 0 m (0 m2)
- ✓ Bathroom : 0 x 0 m (0 m2)

Gallery







RE/MAX Malta - BDV Letting

RE/MAX Malta - BDV

M: 22471300

E: info@remax.com.mt

T: 22471300

RE/MAX Malta - BDV

29, Realco Building, Level 1, ,Achille Ferris Street , Msida, Malta