

# Villa Detached in Mellieha



Mellieha, North



**€1,890,000**

Reference No: 240351001-61151

 Total Rooms: 11

 Floor Area (m<sup>2</sup>) : 1125

 Bathrooms: 4

 Bedrooms: 3

# Villa Detached - For Sale - Mellieha

UNIQUE NEW VILLAS WITH UNOBSTRUCTED SEAVIEW IN SANTA MARIA ESTATE MELLIEHA New project to be delivered in shell form, A rare find New Seaview FULLY DETACHED VILLA built in a plot of 1 Tumolo of Land surrounded by a mature terraced garden with views of Ghadira Bay and L-Ahrax tal- Mellieha. Layout comprises ground floor level of a welcoming hall, 45sqm open plan kitchen/dining/living, study-room, cloakroom, sunken garden, 3 double bedrooms with an ensuite, main bedroom with walk-in wardrobe and comes with terraces (86sqm) overlooking a large pool area with sea & valley views. One also finds a very large basement level (200sqm) including pump room/store, games room/gym and big bathroom and underground reservoir. Large pool (60sqm), pool deck with toilet and showers. All floors can be accessed by lift. Interconnected 3 car garage included. Footprint area is 1125SQM, there is 550SQM internal and over 870SQM external. To be completed in a year.

## Features

- ✓ Lift
- ✓ Walk in Wardrobe
- ✓ Water Utility
- ✓ Passenger Lift
- ✓ Terrace
- ✓ Air Space
- ✓ Deck
- ✓ Front Patio
- ✓ En Suite
- ✓ Entrance Hall
- ✓ Electricity Utility
- ✓ Pool
- ✓ Yard
- ✓ Balcony
- ✓ Garden
- ✓ Pool Deck

## Rooms

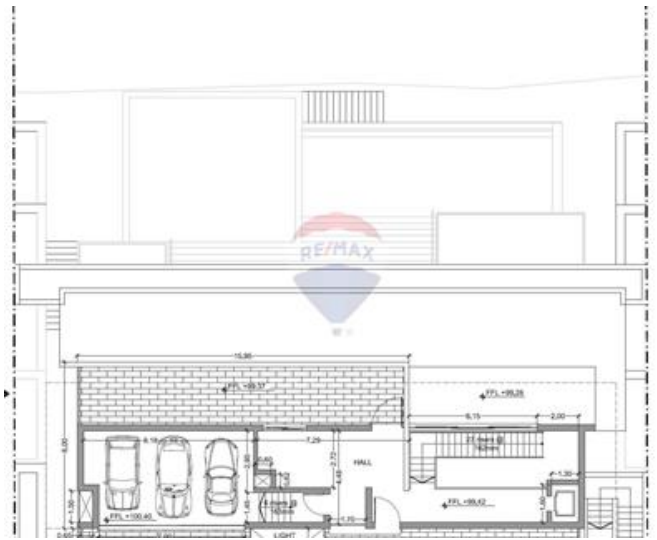
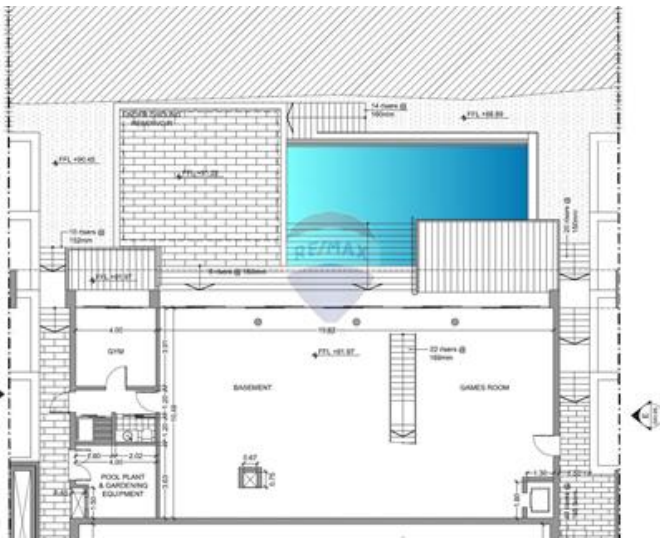
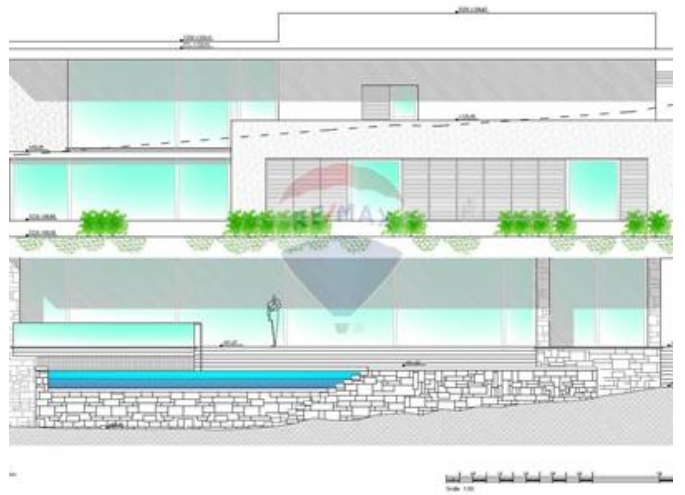
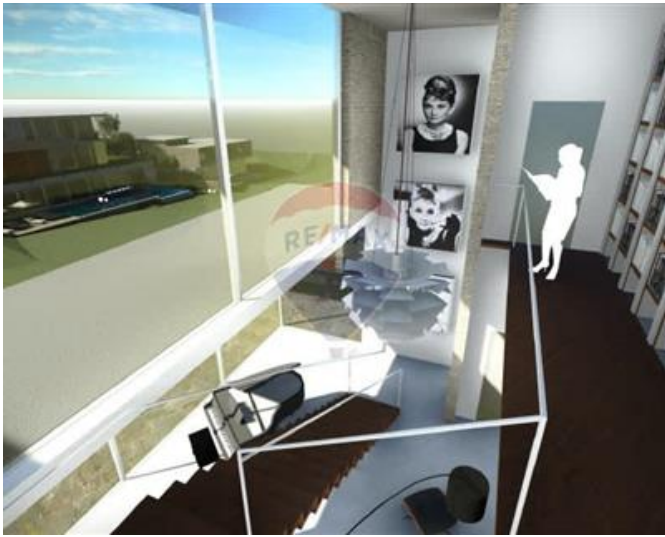
- ✓ Kitchen/Living/Dining : 8.2 x 7.2 m (59.04 m2)
- ✓ Double Bedroom : 7.1 x 5.6 m (39.76 m2)
- ✓ Double Bedroom : 4 x 3.3 m (13.2 m2)
- ✓ Double Bedroom : 4 x 3.3 m (13.2 m2)
- ✓ Bathroom Ensuite : 2.6 x 2.1 m (5.46 m2)
- ✓ Shower Ensuite : 2.1 x 1.8 m (3.78 m2)

- ✓ Shower Ensuite : 2.1 x 1.8 m (3.78 m<sup>2</sup>)
- ✓ Guest Toilet : 1.8 x 1.5 m (2.7 m<sup>2</sup>)
- ✓ Basement : 10.5 x 9.8 m (102.9 m<sup>2</sup>)
- ✓ Games Room : 10.5 x 9.8 m (102.9 m<sup>2</sup>)
- ✓ Gym : 4 x 3.9 m (15.6 m<sup>2</sup>)
- ✓ Hallway : 1.5 x 1.5 m (2.25 m<sup>2</sup>)
- ✓ Garage : 7.65 x 4.4 m (33.66 m<sup>2</sup>)

# Gallery









**RE/MAX Malta - BDV Sales**

RE/MAX Malta - BDV

M: 22471300

E: [bdv@remax.com.mt](mailto:bdv@remax.com.mt)

T: 22471300

**RE/MAX Malta - BDV**

29, Realco Building, Level 1, ,Achille Ferris Street , Msida, Malta