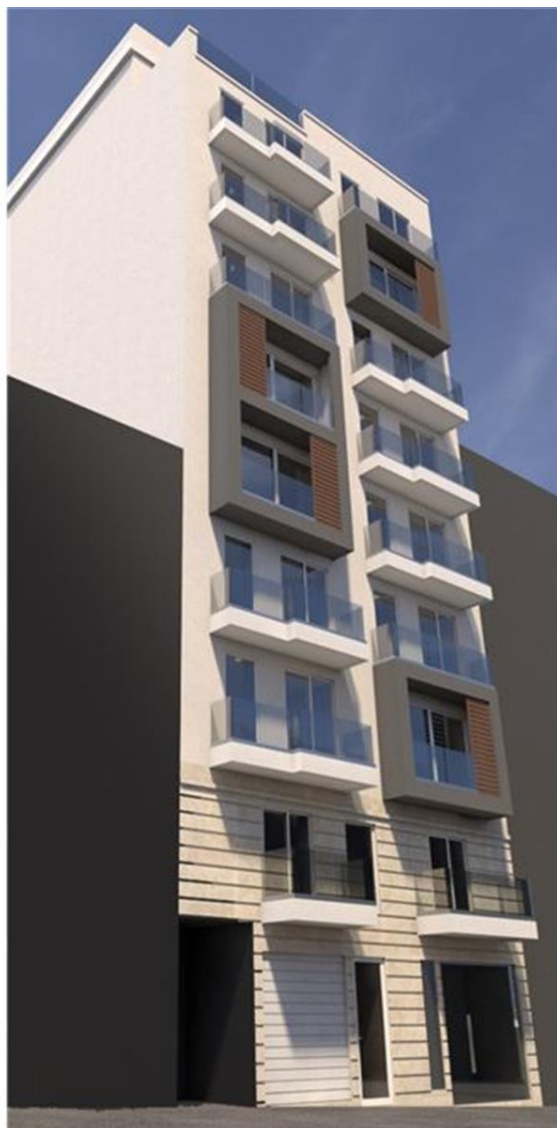


# Garage (Residential) in Sliema



**Sliema, Sliema and St Julians Surroundings**



**€40,000**

Reference No: 240351001-58368

 Total Rooms: **0**

 Floor Area (m<sup>2</sup>) : **29**

 Bathrooms: **0**

 Bedrooms: **0**

# Garage (Residential) - For Sale - Sliema

Sliema - Block of one / two / three bedroom apartments and penthouse with pool situated in one of the best parts of Sliema. Development is situated close to all amenities and is being offered highly finished including doors and bathrooms. Optional car spaces are also available. Freehold

## Features

- ✓ En Suite

## Rooms

# Gallery





**RE/MAX Malta - BDV Sales**

RE/MAX Malta - BDV

M: 22471300

E: [bdv@remax.com.mt](mailto:bdv@remax.com.mt)

T: 22471300

**RE/MAX Malta - BDV**

29, Realco Building, Level 1, ,Achille Ferris Street , Msida, Malta