

# Terraced House in Birkirkara



**Birkirkara, Central**



**€800,000**

Reference No: 240271048-37

 Total Rooms: **8**

 Floor Area (m<sup>2</sup>) : **217**

 Bathrooms: **4**

 Bedrooms: **3**

# Terraced House - For Sale - Birkirkara

BIRKIRKARA - TERRACED HOUSE - This modern, move-in-ready terraced house offers a sleek and contemporary design in which is flooded with natural light , perfect for those seeking both style and functionality. One of the standout features of the property is its expansive five-car basement garage complete with a separate access door, providing exceptional convenience of space and a bathroom . On the ground floor one finds an open-plan kitchen and living area that flows seamlessly, complemented by high-quality fixtures, sleek finishes, and state-of-the-art appliances in which is separated from the kitchen in which is complemented by a back terrace and a bathroom. On the first floor there is the 3 bedrooms one of which is with ensuite . With three spacious bedrooms, this home provides ample living space across multiple floors. On the second floor there is the laundry with two sided roofs which is fully accessible and has been designed to function as an outdoor entertaining area as well . The interior is finished to high modern standards, This home provides a harmonious blend of luxury, practicality and contemporary living.

## Features

- ✓ Ceramic Floor
- ✓ Walk in Wardrobe
- ✓ Water Utility
- ✓ Towel Warmers
- ✓ Skirting
- ✓ Home Sound System
- ✓ Double Glazed
- ✓ Court Yard
- ✓ Space For Pool
- ✓ En Suite
- ✓ Entrance Hall
- ✓ Gypsum Plastering
- ✓ A/C
- ✓ Intelligent Lighting
- ✓ Wi-Fi
- ✓ Terrace
- ✓ Air Space
- ✓ Roof Terrace

## Rooms

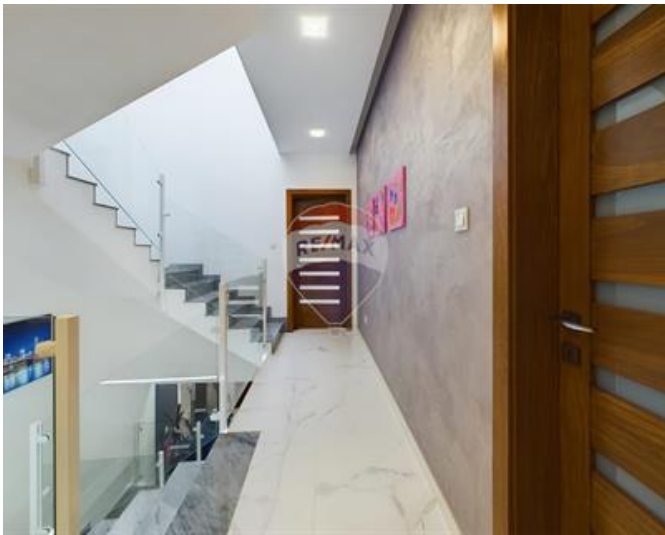
- ✓ Kitchen/Living/Dining : 13.73 x 5.66 m (77.71 m2)
- ✓ Bathroom : 2.87 x 2.09 m (6 m2)
- ✓ Garage : 13.26 x 5.44 m (72.13 m2)

- ✓ Bathroom : 3.06 x 2.13 m (6.52 m<sup>2</sup>)
- ✓ Bathroom : 1.62 x 2.14 m (3.47 m<sup>2</sup>)
- ✓ Bathroom : 2.2 x 2.4 m (5.28 m<sup>2</sup>)
- ✓ Double Bedroom : 3.77 x 4.57 m (17.23 m<sup>2</sup>)
- ✓ Double Bedroom : 4.58 x 3.43 m (15.71 m<sup>2</sup>)
- ✓ Double Bedroom : 4.76 x 2.13 m (10.14 m<sup>2</sup>)
- ✓ Hallway : 4.84 x 3.5 m (16.94 m<sup>2</sup>)
- ✓ Open Space : 1.1 x 2.5 m (2.75 m<sup>2</sup>)
- ✓ Open Space : 3.2 x 2 m (6.4 m<sup>2</sup>)
- ✓ Open Space : 3.4 x 1.5 m (5.1 m<sup>2</sup>)
- ✓ Open Space : 4.5 x 5.65 m (25.43 m<sup>2</sup>)
- ✓ Open Space : 3.92 x 5.62 m (22.03 m<sup>2</sup>)

# Gallery



















**Janica Schembri**

RE/MAX South - Marsascala

M: 79995454

E: [janicas@remax.com.mt](mailto:janicas@remax.com.mt)

T: 21555000

**RE/MAX South - Marsascala**

60, Triq is-Salini, Marsascala, Malta