

Penthouse in Birzebbuga



Birzebbuga, South



€699,000

Reference No: 240271042-257

 Total Rooms: **7**

 Floor Area (m²) : **138**

 Bathrooms: **2**

 Bedrooms: **3**

Penthouse - For Sale - Birzebbuga

Designer Penthouse with Expansive Roof Terrace, Distant Sea Views & Airspace – Birzebbuga An exceptional opportunity to acquire a meticulously finished penthouse, presented in impeccable condition and furnished to the highest standards throughout. Showcasing contemporary elegance, premium finishes, and outstanding outdoor entertaining spaces, this remarkable residence is truly ready for immediate occupation. The property welcomes you into a stunning open-plan living, dining, and kitchen area, beautifully designed to maximise natural light and seamlessly extending onto a spacious front terrace — the perfect setting for entertaining guests or enjoying peaceful moments outdoors while enjoying distant sea views. Accommodation comprises three generously proportioned double bedrooms, including a luxurious master suite complete with private en-suite facilities, together with a stylish main bathroom finished to an excellent standard. A practical washroom further enhances the property's everyday functionality. To the rear, a back terrace features a bespoke spiral staircase leading to an impressive private roof terrace, offering a rare and highly desirable outdoor lifestyle experience. This spectacular rooftop retreat enjoys distant sea views and is equipped with a fully functional outdoor kitchen and traditional stone oven, creating the ultimate setting for al fresco dining, entertaining, and enjoying panoramic open-air living. Further complementing this outstanding home are a comprehensive security camera system, high-quality furnishings throughout, and the inclusion of the overlying airspace, offering long-term value and future potential. A truly turnkey residence where every detail has been carefully considered, combining luxury, comfort, and practicality with beautiful sea views in one of Birzebbuga's most sought-after locations. Optional interconnected garage available at an additional cost.

Features

- ✓ Lift
- ✓ En Suite
- ✓ Electricity Utility
- ✓ A/C
- ✓ Double Glazed
- ✓ Air Space
- ✓ Ceramic Floor
- ✓ Water Utility
- ✓ Gypsum Plastering
- ✓ Passenger Lift
- ✓ Terrace

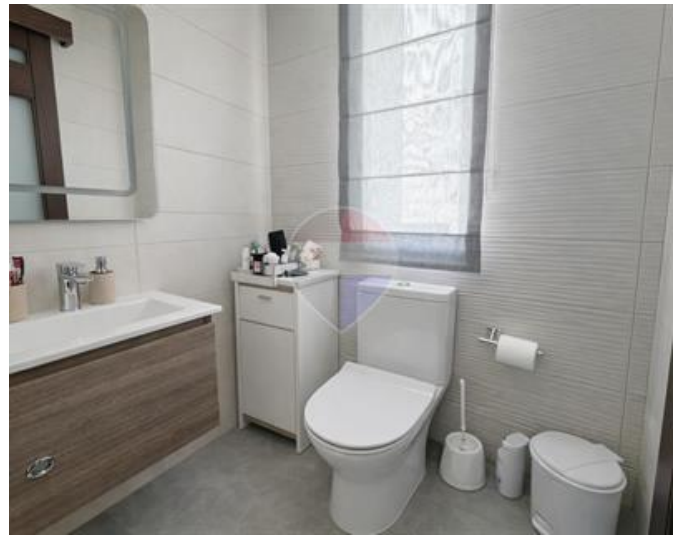
Rooms

- ✓ Kitchen/Living/Dining : 8.5 x 5.15 m (43.78 m²)
- ✓ Double Bedroom : 3.8 x 3.8 m (14.44 m²)

- ✓ Double Bedroom : 3.75 x 3.66 m (13.73 m²)
- ✓ Double Bedroom : 3.35 x 3.3 m (11.05 m²)
- ✓ Laundry : 1.73 x 1.6 m (2.77 m²)
- ✓ Hallway : 13.41 x 1.15 m (15.42 m²)
- ✓ Bathroom : 2.62 x 2.46 m (6.45 m²)
- ✓ Bathroom Ensuite : 1.46 x 2.36 m (3.45 m²)
- ✓ Open Space : 5.1 x 3.4 m (17.34 m²)
- ✓ Open Space : 5.05 x 1.2 m (6.06 m²)

Gallery









Kelcy White

RE/MAX South - Marsascala

M: 79263954

E: kelcy@remax.com.mt

T: 21555000

RE/MAX South - Marsascala

53, Triq is-Salini, Marsascala, Malta