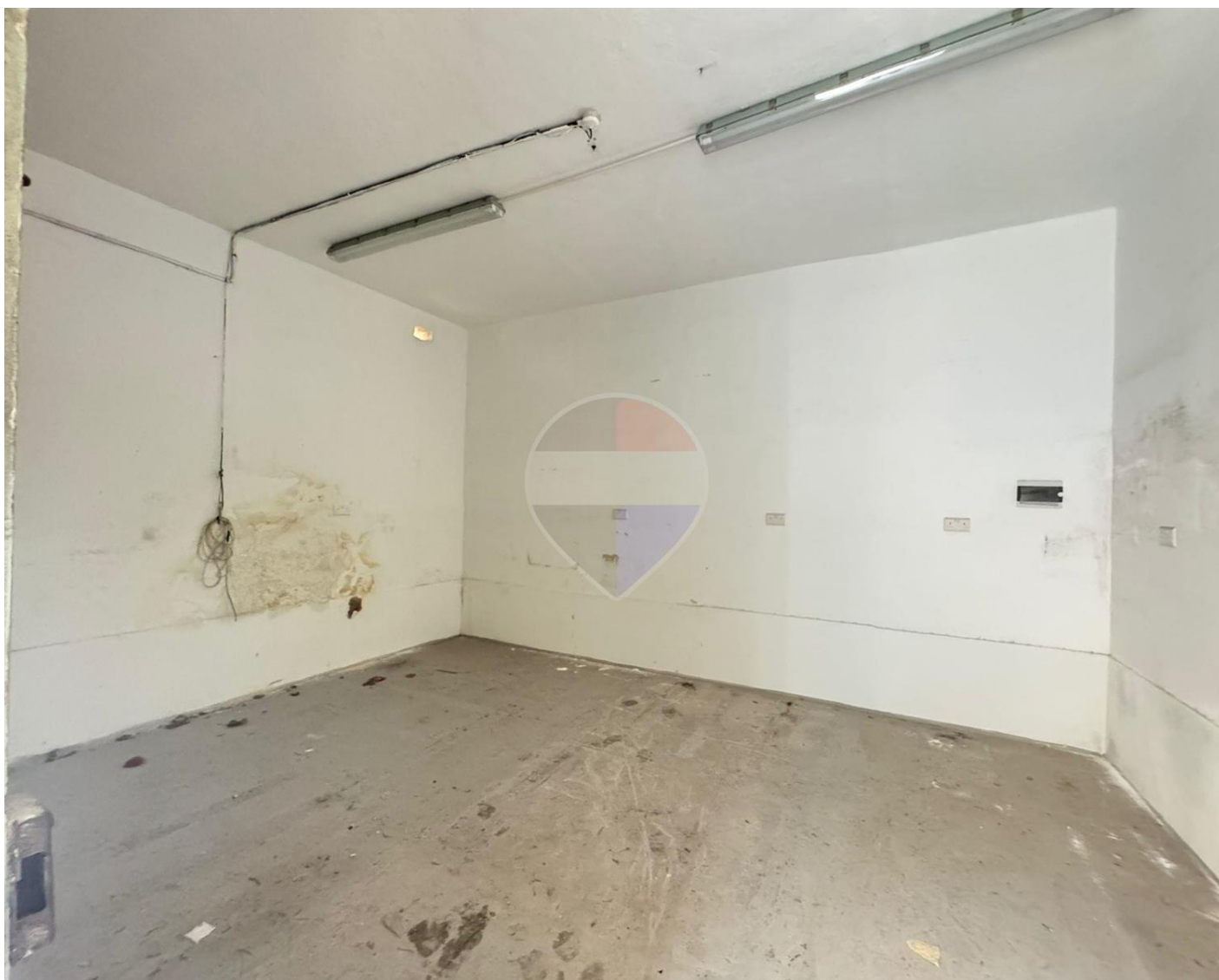


# Garage (Residential) in Pieta



Pieta, Sliema and St Julians Surroundings



**€95,000**

Reference No: 240251096-423

 Total Rooms: **0**

 Floor Area (m<sup>2</sup>) : **34**

 Bathrooms: **0**

 Bedrooms: **0**

# Garage (Residential) - For Sale - Pieta

Spacious two-car garage located in a very central and easily accessible area. The garage is situated at street level, allowing for convenient entry and exit without the need for ramps. It features a secure manual door and is equipped with electricity, making it ideal not only for parking but also for storage or small workshop use. Its central location makes it a practical solution for anyone looking for secure parking or extra storage space close to all amenities.

## Features

- ✓ Electricity Utility

## Rooms

- ✓ Garage : 5.2 x 5.2 m (27.04 m<sup>2</sup>)

# Gallery





**Clive Pollacco**

RE/MAX Advantage

M: 79486346

E: [clivep@remax.com.mt](mailto:clivep@remax.com.mt)

T: 21222123

**RE/MAX Advantage**

Advantage Residential Ltd, Triq Dun Karm, Birkirkara, Malta