

Townhouse in Sliema




Sliema, Sliema and St Julians Surroundings



€980,000

Reference No: 240251083-331

 Total Rooms: **10**

 Floor Area (m²) : **145**

 Bathrooms: **2**

 Bedrooms: **4**

Townhouse - For Sale - Sliema

Sliema double fronted Art Nouveau town house dating back to 1929. Designed by renowned Architect Gustavo Vincenti, this is listed as a Grade 2 building in GN 0700 of 1995. The property is set over 2 floors and is found in the Urban Conservation Area of Sliema. The internal planning is as follows: The house boasts a beautiful hallway with an intricate helical staircase and formal dining and formal sitting room on either side. 4 Bedrooms (three double and 1 single) A useable basement with the same foot print as the front rooms. Wash room leading to two roofs Optional one car garage available Massive potential !!!

Features

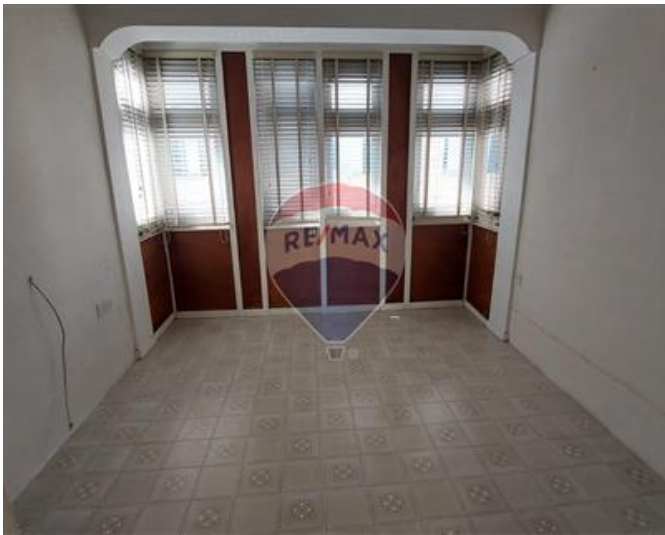
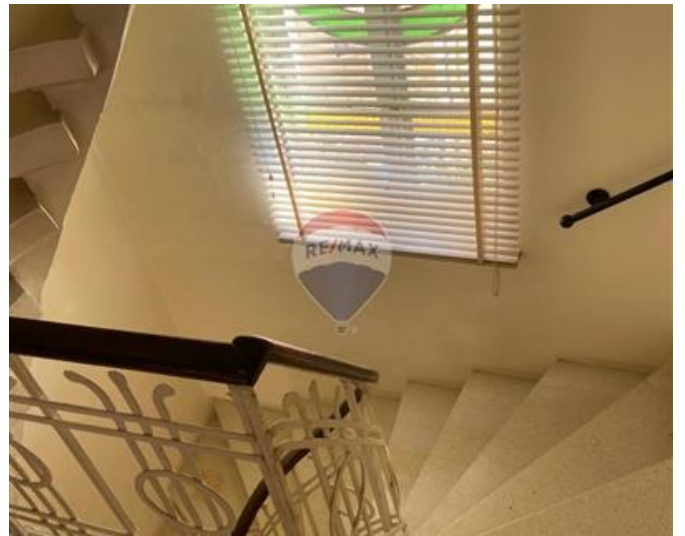
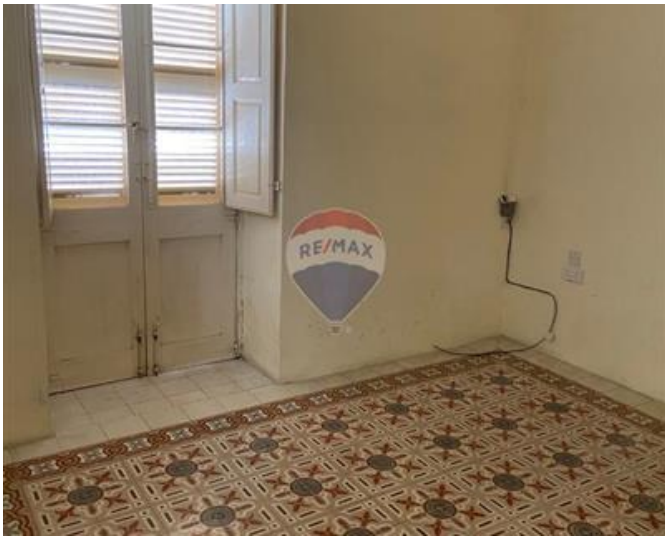
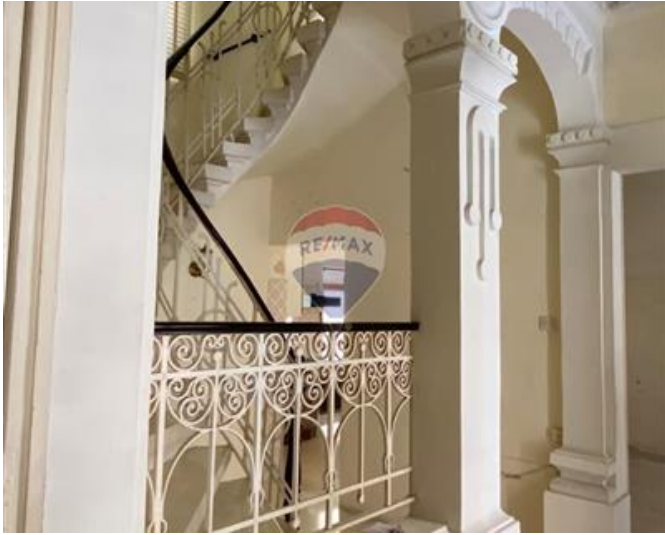
- ✓ En Suite
- ✓ Skirting
- ✓ Court Yard
- ✓ Back Yard
- ✓ Water Utility
- ✓ Pattern Tiles
- ✓ Balcony

Rooms

- ✓ Kitchen : 4 x 3 m (12 m²)
- ✓ Dining : 3.7 x 4 m (14.8 m²)
- ✓ Living : 3.7 x 4 m (14.8 m²)
- ✓ Double Bedroom : 3.3 x 3 m (9.9 m²)
- ✓ Double Bedroom : 4 x 3.7 m (14.8 m²)
- ✓ Double Bedroom : 4 x 3.7 m (14.8 m²)
- ✓ Double Bedroom : 3.6 x 2.4 m (8.64 m²)
- ✓ Laundry : 3 x 2.6 m (7.8 m²)
- ✓ Shower : 2.16 x 1.5 m (3.24 m²)
- ✓ Guest Toilet : 3 x 2 m (6 m²)
- ✓ Open Space : 2.23 x 2.3 m (5.13 m²)

Gallery









Reuben Abela

RE/MAX Advantage - Msida

M: 99423812

E: reubena@remax.com.mt

T: 21222123

RE/MAX Advantage - Msida

Regional Business Centre, Triq Achille Ferris, Msida, Malta