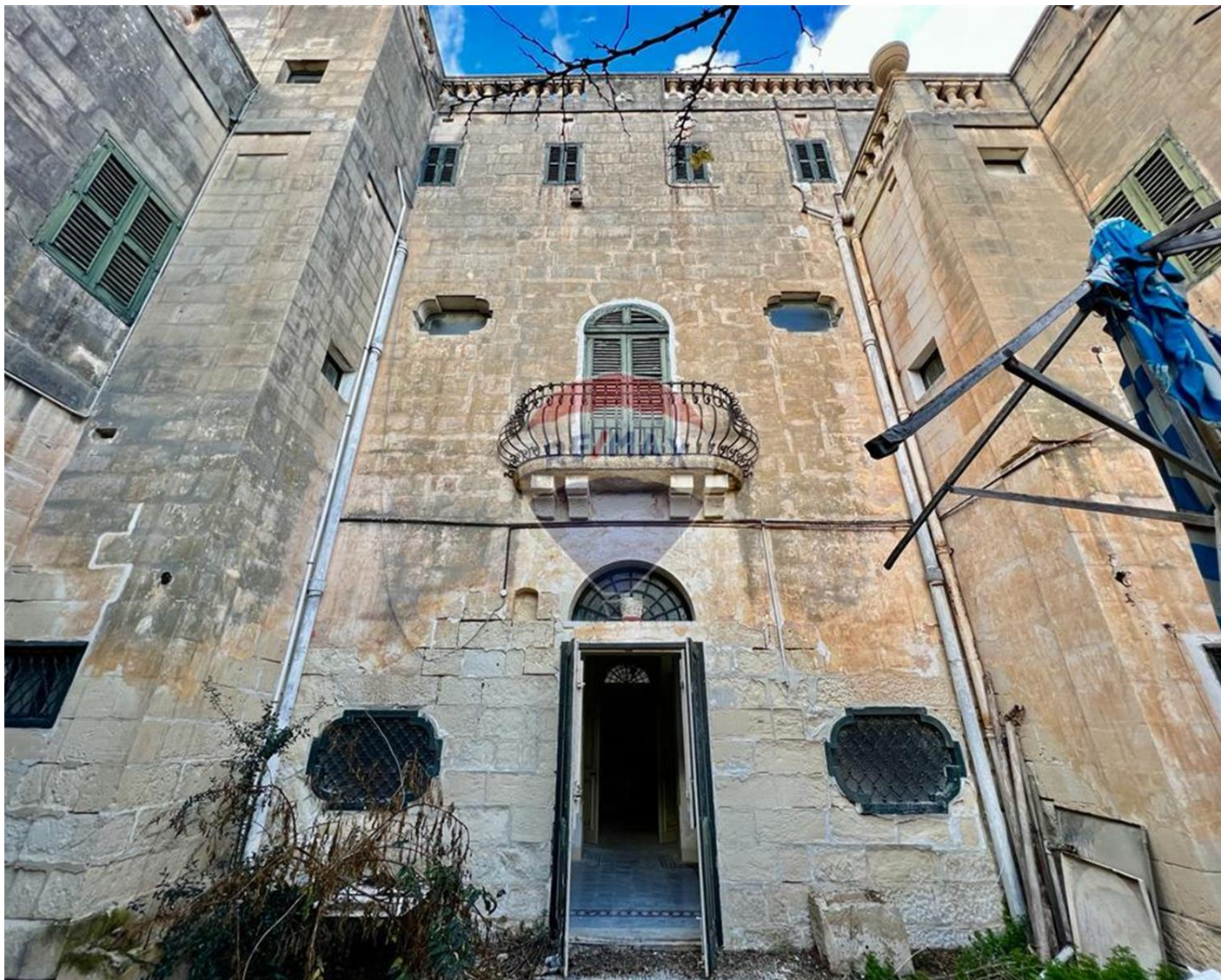


Palazzo in Lija



Lija, Central



€2,750,000

Reference No: 240251003-417

 Total Rooms: 13

 Floor Area (m²) : 570

 Bathrooms: 3

 Bedrooms: 6

Palazzo - For Sale - Lija

One of the most beautiful and authentic Palatial Townhouses to be found in this much sought after village. Boasting an imposing 60ft facade and set on an alley corner, this property must be experienced to be truly appreciated. Accommodation consists of an imposing entrance hallway directly onlooking the wonderful back courtyard /garden. A large Kitchen with pantry, separate breakfast room, an impressive formal dining room connecting to a beautiful formal sitting room all surrounding the courtyard. A staircase leads up to a sunlit landing giving access to a most charming Sala Nobile set as a lounge/living area with windows and balcony onto the wide facade of the property. The property also boasts a magnificent basement underlying the entire house that could easily accommodate a wine cellar, gym, cinema room and more. Sleeping quarters include four bedrooms at first floor level with an additional two double bedrooms set as part of an independent roof level flatlet equipped with it's own living area, bathroom and kitchenette all leading onto two large roof terraces commanding lovely village views. The upper roof level offers a perfect view of the main piazza and provides the ideal setting for entertainment during the Village Festa, the Lija Festa being one of the best on the island with it's extravagant fireworks display that never fails to enchant. Contact your preferred RE/MAX Agent for an immediate viewing.

Features

- ✓ En Suite
- ✓ Fire Place Heating
- ✓ Marble Floor
- ✓ Water Utility
- ✓ Electricity Utility
- ✓ Pattern Tiles
- ✓ Yard
- ✓ Court Yard
- ✓ Space For Pool
- ✓ Well
- ✓ Garden

Rooms

- ✓ Living : 5 x 2.84 m (14.2 m2)
- ✓ Bathroom : 2.44 x 1.91 m (4.66 m2)
- ✓ Double Bedroom : 5 x 4.22 m (21.1 m2)
- ✓ Double Bedroom : 6 x 4.53 m (27.18 m2)
- ✓ Bathroom : 5.87 x 4.04 m (23.71 m2)
- ✓ Double Bedroom : 4.71 x 4.5 m (21.2 m2)

- ✓ Landing : 7.01 x 4.27 m (29.93 m²)
- ✓ Sitting : 9.39 x 4.5 m (42.26 m²)
- ✓ Living : 4.17 x 4.13 m (17.22 m²)
- ✓ Double Bedroom : 4 x 3.1 m (12.4 m²)
- ✓ Double Bedroom : 4.32 x 4.21 m (18.19 m²)
- ✓ Bathroom : 2.79 x 2.33 m (6.5 m²)
- ✓ Double Bedroom : 4.22 x 3.6 m (15.19 m²)
- ✓ Dining : 7.75 x 4.14 m (32.09 m²)

Gallery









Clive Demicoli

RE/MAX Advantage

M: 99497735

E: clived@remax.com.mt

T: 21222123

RE/MAX Advantage

Advantage Residential Ltd, Triq Dun Karm, Birkirkara, Malta