

Penthouse in Swieqi




Swieqi, Sliema and St Julians Surroundings



€1,800

Reference No: 240221064-20

 Total Rooms: **3**

 Floor Area (m²): **0**

 Bathrooms: **1**

 Bedrooms: **2**

Penthouse - For Rent - Swieqi

Modern 2-Bedroom Penthouse in Swieqi This penthouse offers 2 double bedrooms and a spacious main bathroom with both a shower and a bathtub. The fully equipped kitchen, complete with a dishwasher. The open-plan living and dining area includes an office desk. A large terrace offers a great space for outdoor entertainment with a sitting lounge. Additional amenities include a parking spot in the garage, a lift in the building, and a dedicated workspace.

Features

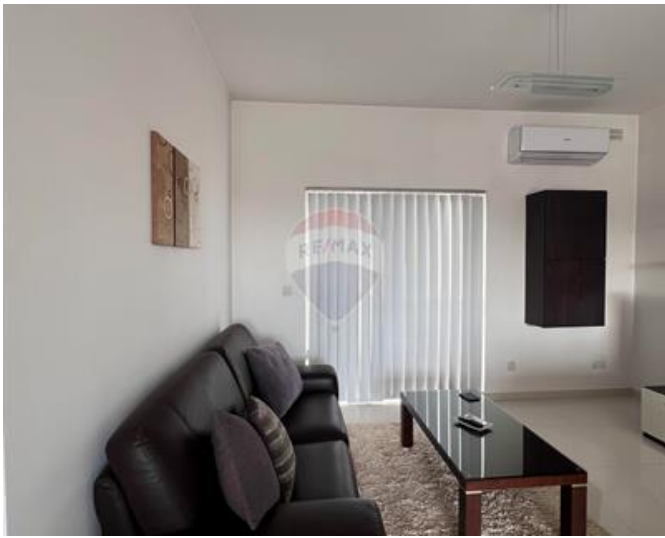
- ✓ Lift
- ✓ Ceramic Floor
- ✓ Electricity Utility
- ✓ PVC Piping
- ✓ A/C
- ✓ Terrace
- ✓ Kitchen/Dinette
- ✓ Water Utility
- ✓ Gypsum Plastering
- ✓ 3 Phase Electricity
- ✓ Double Glazed

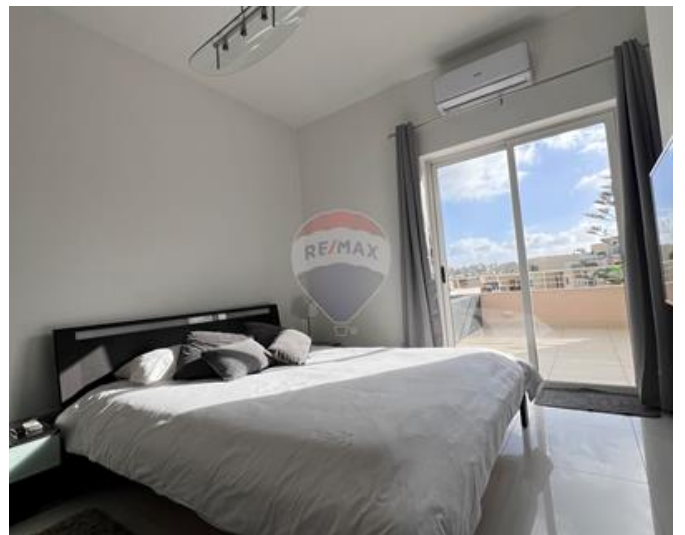
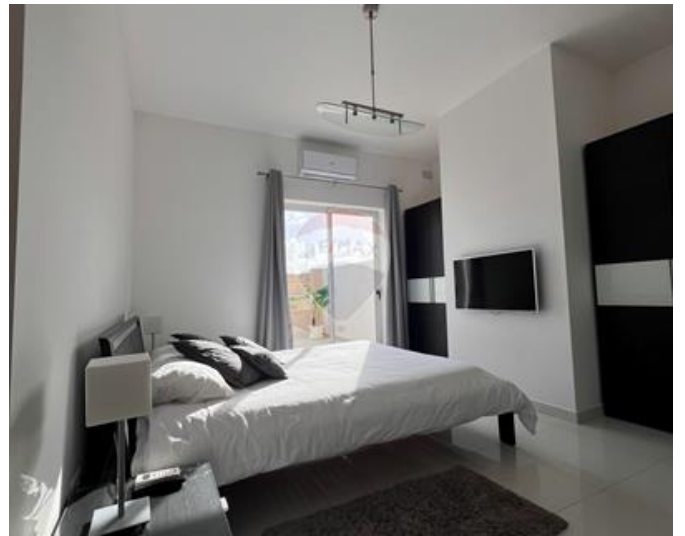
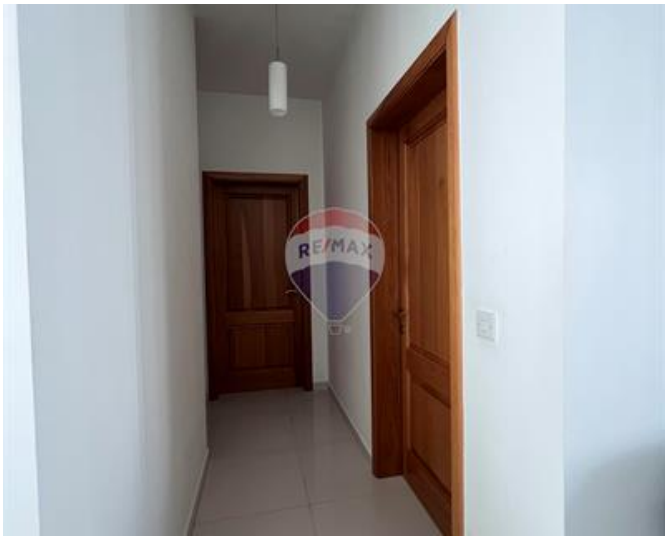
Rooms

- ✓ Double Bedroom : 0 x 0 m (0 m2)
- ✓ Double Bedroom : 0 x 0 m (0 m2)
- ✓ Bathroom : 0 x 0 m (0 m2)

Gallery









Linda Rueckert

RE/MAX Excellence - Piazzetta

M: 77614143

E: linda@remax.com.mt

T: 21341341

RE/MAX Excellence - Piazzetta

114B, Tower Road, Sliema, Malta