

Villa Semi-detached in Attard



Attard, Central



€5,500

Reference No: 240221058-228

 Total Rooms: **11**

 Floor Area (m²) : **598**

 Bathrooms: **3**

 Bedrooms: **4**

Villa Semi-detached - For Rent - Attard

ATTARD - SEMI-DETACHED VILLA set in a tranquil location yet close to all amenities, and enjoying unobstructed country views . This villa is finished to the highest standards with a lot of thought placed on its layout and space. Property is in the form of front patio, leading to an entrance hall, a guest toilet, a spacious living, Kitchen and dining leading to a large terrace with pool and deck area and surrounding garden . On the upper level one finds four double bedrooms(main with an en-suite), a guest bathroom and a walk in wardrobe.This amazing villa enjoys plenty of natural light and space ,included in the price is an interconnected four car garage with port. Must be seen to be appreciated.

Features

- ✓ Ceramic Floor
- ✓ En Suite
- ✓ Entrance Hall
- ✓ Wood Stove Heating
- ✓ A/C
- ✓ Double Glazed
- ✓ Terrace
- ✓ Balcony
- ✓ Garden
- ✓ Video Hall Porter
- ✓ Walk in Wardrobe
- ✓ Marble Floor
- ✓ Gypsum Plastering
- ✓ Home Sound System
- ✓ Pool
- ✓ Well
- ✓ Deck
- ✓ Front Patio

Rooms

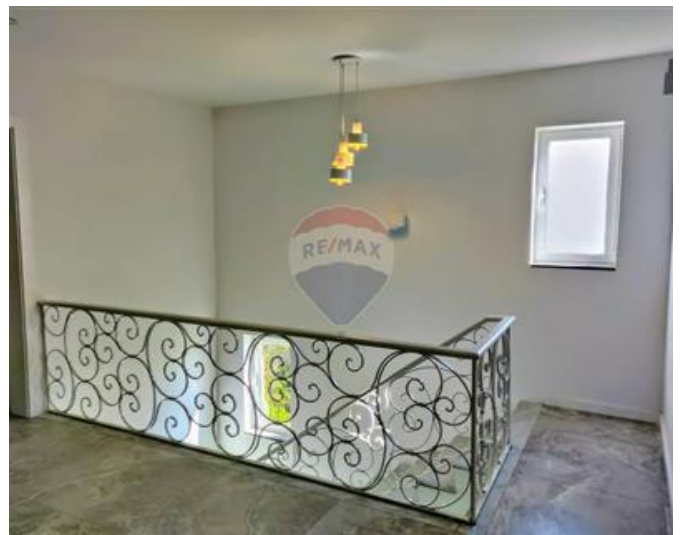
- ✓ Kitchen : 7.92 x 5.17 m (40.94 m2)
- ✓ Living : 8.63 x 7.72 m (66.62 m2)
- ✓ Dining : 4 x 5 m (20 m2)
- ✓ Double Bedroom : 3.78 x 3.93 m (14.85 m2)
- ✓ Double Bedroom : 2.91 x 5.24 m (15.24 m2)

- ✓ Double Bedroom : 2.45 x 2.09 m (5.12 m²)
- ✓ Double Bedroom : 3.66 x 5.51 m (20.16 m²)
- ✓ Walk In Wardrobe : 1.77 x 2.45 m (4.33 m²)
- ✓ Guest Toilet : 1.31 x 2.33 m (3.05 m²)
- ✓ Garage : 7.52 x 15.12 m (113.7 m²)
- ✓ Bathroom Ensuite : 0 x 0 m (0 m²)
- ✓ Bathroom : 0 x 0 m (0 m²)

Gallery











Jason Aquilina

RE/MAX Excellence - Piazzetta

M: 99466163

E: jaquilina@remax.com.mt

T: 21341341

RE/MAX Excellence - Piazzetta

114B, Tower Road, Sliema, Malta