

Townhouse in Attard



Attard, Central



€895,000

Reference No: 240221039-49

 Total Rooms: **14**

 Floor Area (m²) : **140**

 Bathrooms: **4**

 Bedrooms: **3**

Townhouse - For Sale - Attard

ATTARD – Designer finished with a classic contemporary look, Townhouse situated in the village core. The property had an extensive refurbishment and finished to very high specifications by its present owners, whilst respecting the original features of the house. The Ground Floor comprises of a welcoming entrance hall, followed by the living / sitting area which is flooded with natural light from the large central atrium, a fully fitted kitchen with top quality appliances and a bright and warm separate dining area. Also on this level you find a guest toilet and a cloakroom. Upstairs there are 3 bedrooms, all with en-suite facilities and the master bedroom has a nice small living / dressing area. On the roof level there is a washroom with a kitchenette leading to a large and very private roof terrace, ideal for entertaining where one can enjoy Church and Village views. The property features concealed air conditioners, intelligent lighting, parquet floors, custom fitted furniture, a motorized skylight, fireplace, alarm system, solar PV panels, solar water heater and more. Selling fully furnished and ready to move into. No expense has been spared in converting this precious gem into a fantastic home. Truly, a property to be appreciated by those who have an eye for detail and appreciate quality and style. Optional two lock-up garages are available.

Features

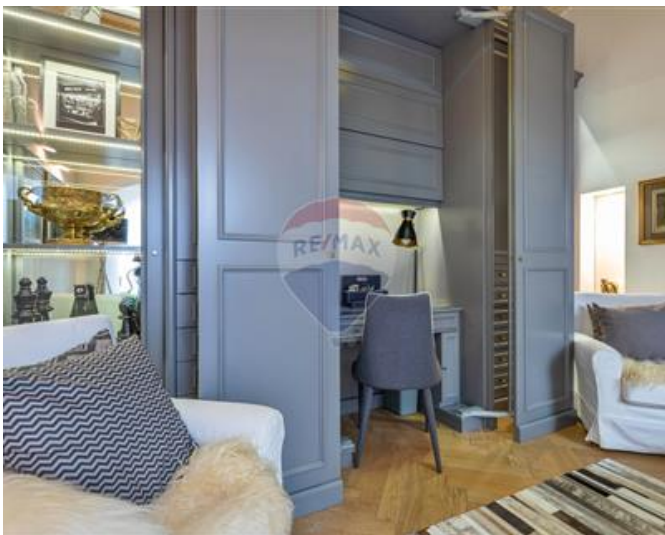
- ✓ Kitchen/Dinette
- ✓ Entrance Hall
- ✓ Parquet Floor
- ✓ Water Utility
- ✓ Soffit Ceilings
- ✓ PVC Piping
- ✓ Skirting
- ✓ Wi-Fi
- ✓ Yard
- ✓ Well
- ✓ Solar Water Heating
- ✓ Satellite / TV/ Cable
- ✓ En Suite
- ✓ Fire Place Heating
- ✓ Floors - Hardwood
- ✓ Electricity Utility
- ✓ Gypsum Plastering
- ✓ A/C
- ✓ Intelligent Lighting
- ✓ Double Glazed
- ✓ Air Space
- ✓ Solar Panels
- ✓ Alarm System

Rooms

- ✓ Kitchen : 7.5 x 3 m (22.5 m²)
- ✓ Dining : 4.5 x 3.5 m (15.75 m²)
- ✓ Living : 4.5 x 4 m (18 m²)
- ✓ Sitting : 3 x 4.5 m (13.5 m²)
- ✓ Double Bedroom : 6.5 x 4 m (26 m²)
- ✓ Double Bedroom : 5 x 4.5 m (22.5 m²)
- ✓ Double Bedroom : 4.5 x 3 m (13.5 m²)
- ✓ Office / Study : 4 x 4 m (16 m²)
- ✓ Box Room : 1.5 x 1.5 m (2.25 m²)
- ✓ Laundry : 6 x 3 m (18 m²)
- ✓ Hallway : 4 x 2 m (8 m²)
- ✓ Bathroom Ensuite : 3.5 x 2 m (7 m²)
- ✓ Bathroom Ensuite : 4 x 1.5 m (6 m²)
- ✓ Bathroom Ensuite : 3 x 3 m (9 m²)
- ✓ Guest Toilet : 1.5 x 1.5 m (2.25 m²)
- ✓ Open Space : 6 x 10 m (60 m²)

Gallery













Fotis Konidaris

RE/MAX Affiliates - Excellence Piazzetta

M: 99241010

E: fotisk@remax.com.mt

T: 21341341

RE/MAX Affiliates - Excellence Piazzetta

114B, Triq it- Torri, Sliema, Malta