

# Farmhouse in Bingemma



**Bingemma, North**



**€3,900,000**

Reference No: 240221028-343

 Total Rooms: 11

 Floor Area (m<sup>2</sup>) : 4600

 Bathrooms: 4

 Bedrooms: 4

# Farmhouse - For Sale - Bingemma

Bingemma (L/O Mgarr) - A unique luxuriously finished Farmhouse set on a 4,600 sqm plot of land on high ground of which one can enjoy the most spectacular sunsets and open views of the green area stretching all the way to the sea. A very private exclusive residence has a driveway that leads to an open parking space surrounded by gardens. The property consists of an wide fronted open plan Kitchen / Living / Dining from which one enjoys the open views and leads to the beach-like swimming pool and decking area. On this floor one also finds 3 bedrooms all with ensuite facilities and an interconnecting garage. On the upper floor is a penthouse / flatlet with a private entrance, kitchenette, ensuite, and terraces with gorgeous views. At the basement level, there is a 4-meter cinema, another fully equipped kitchen, 2 bedrooms with high-level windows, a bathroom, an office, a gym, and more. All levels are serviced with a lift, underfloor heating in all bathrooms, 2 fireplaces, a jacuzzi, soundproofing, and much more.

## Features

- ✓ Lift
- ✓ Kitchen/Dinette
- ✓ En Suite
- ✓ Entrance Hall
- ✓ Marble Floor
- ✓ Electricity Utility
- ✓ Soffit Ceilings
- ✓ 3 Phase Electricity
- ✓ Skirting
- ✓ Wi-Fi
- ✓ Partially Furnished
- ✓ Terrace
- ✓ Well
- ✓ Deck
- ✓ Roof Terrace
- ✓ Front Patio
- ✓ Pool Deck
- ✓ Natural Gas
- ✓ Video Hall Porter
- ✓ Walk in Wardrobe
- ✓ Floor Heating
- ✓ Water Utility
- ✓ Wood Stove Heating
- ✓ Gypsum Plastering
- ✓ A/C
- ✓ Home Automation
- ✓ Double Glazed
- ✓ Pool
- ✓ Air Space
- ✓ Balcony
- ✓ Back Yard
- ✓ Garden
- ✓ Solar Panels
- ✓ CCTV

✓ Alarm System

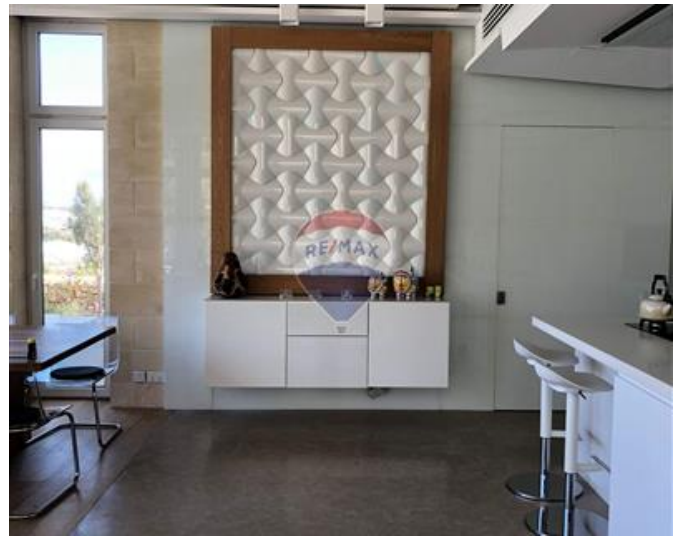
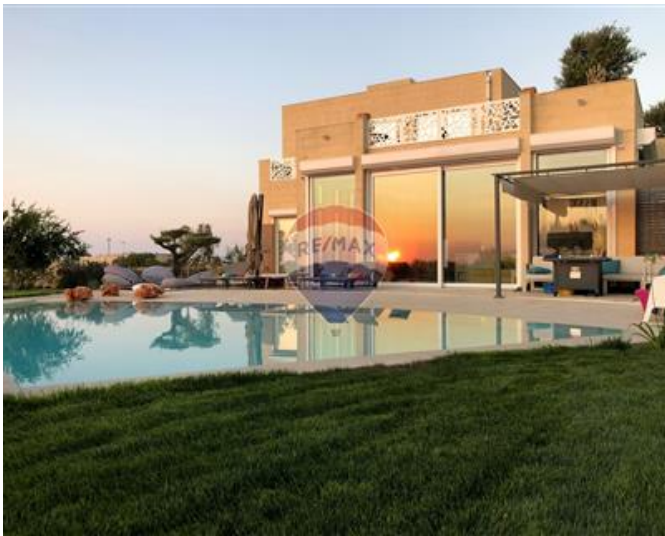
✓ Satellite / TV/ Cable

# Rooms

- ✓ Kitchen/Living/Dining : 8 x 7.2 m (57.6 m<sup>2</sup>)
- ✓ Double Bedroom : 3.7 x 3.7 m (13.69 m<sup>2</sup>)
- ✓ Double Bedroom : 3.2 x 3.5 m (11.2 m<sup>2</sup>)
- ✓ Double Bedroom : 3.2 x 3.5 m (11.2 m<sup>2</sup>)
- ✓ Walk In Wardrobe : 2.4 x 1.4 m (3.36 m<sup>2</sup>)
- ✓ Shower Ensuite : 1.5 x 2 m (3 m<sup>2</sup>)
- ✓ Shower Ensuite : 1.5 x 2 m (3 m<sup>2</sup>)
- ✓ Guest Toilet : 2.1 x 1 m (2.1 m<sup>2</sup>)
- ✓ Garage : 5.5 x 2.9 m (15.95 m<sup>2</sup>)
- ✓ Double Bedroom : 6.4 x 5.4 m (34.56 m<sup>2</sup>)
- ✓ Shower Ensuite : 2.2 x 2.2 m (4.84 m<sup>2</sup>)
- ✓ Open Space : 10 x 11 m (110 m<sup>2</sup>)
- ✓ Open Space : 8 x 6.3 m (50.4 m<sup>2</sup>)
- ✓ Basement : 11.5 x 13 m (149.5 m<sup>2</sup>)

# Gallery









**Manuel Borg**

RE/MAX Excellence - Piazzetta

M: 79494425

E: manuel@remax.com.mt

T: 21341341

**RE/MAX Excellence - Piazzetta**

114B, Tower Road, Sliema, Malta