

# Apartment in Swieqi



**Swieqi, Sliema and St Julians Surroundings**



**€350,000**

Reference No: 240221028-3116

 Total Rooms: **3**

 Floor Area (m<sup>2</sup>) : **64**

 Bathrooms: **1**

 Bedrooms: **1**

# Apartment - For Sale - Swieqi

SWIEQI - A brand new Apartment which is currently under construction and will be complete by end 2026. This large apartment is being sold fully finished excluding internal doors and comprising of a wide fronted and spacious layout. Comprising is an open plan kitchen / living / dining room, double bedroom, bathroom and a front balcony. Optional lock up and interconnecting garages available at an extra cost.

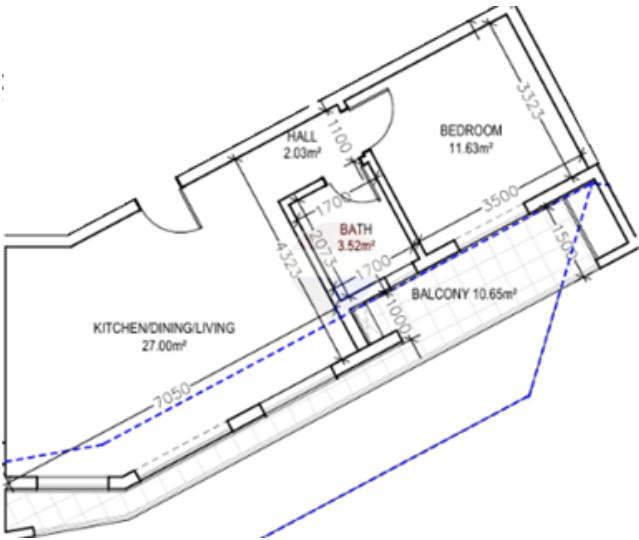
## Features

- ✓ Ceramic Floor
- ✓ En Suite
- ✓ Gypsum Plastering
- ✓ Skirting
- ✓ Double Glazed
- ✓ Video Hall Porter
- ✓ Entrance Hall
- ✓ PVC Piping
- ✓ Passenger Lift
- ✓ Balcony

## Rooms

- ✓ Kitchen/Living/Dining : 7 x 4 m (28 m<sup>2</sup>)
- ✓ Double Bedroom : 3.3 x 3.5 m (11.55 m<sup>2</sup>)
- ✓ Bathroom : 2 x 1.7 m (3.4 m<sup>2</sup>)
- ✓ Open Space : 1.5 x 8.6 m (12.9 m<sup>2</sup>)

# Gallery





**Manuel Borg**

RE/MAX Excellence - Piazzetta

M: 79494425

E: manuel@remax.com.mt

T: 21341341

**RE/MAX Excellence - Piazzetta**

114B, Tower Road, Sliema, Malta