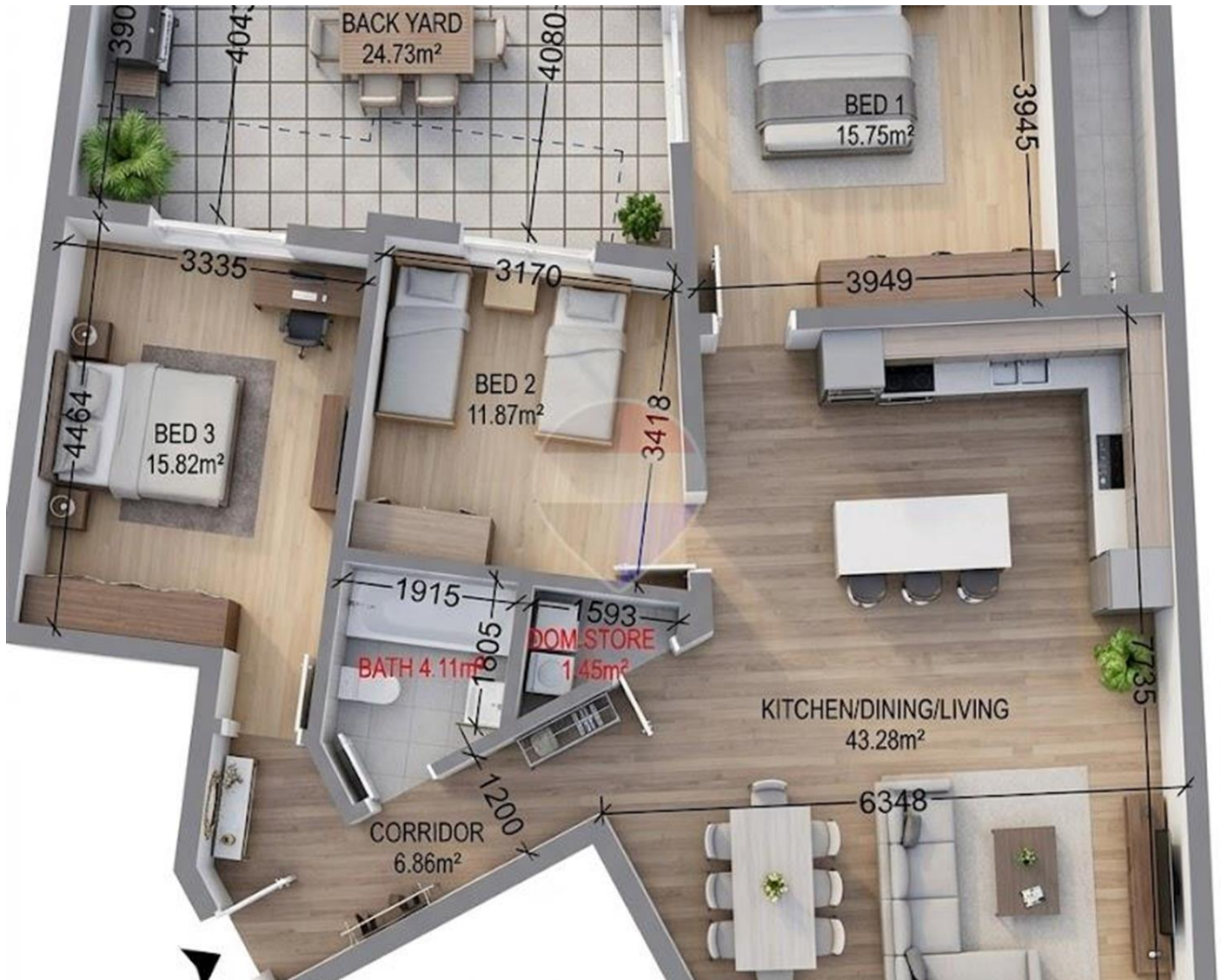


# Apartment in Swieqi



## Swieqi, Sliema and St Julians Surroundings



**€535,000**

Reference No: 240221028-3115

 Total Rooms: 7

 Floor Area (m<sup>2</sup>) : 155

 Bathrooms: 2

 Bedrooms: 3

# Apartment - For Sale - Swieqi

SWIEQI - A brand new Apartment which is currently under construction and will be complete by end 2026. This large apartment is being sold fully finished excluding internal doors and comprising of a wide fronted and spacious layout. Comprising is an open plan kitchen / living / dining room, 3 double bedrooms, 2 bathrooms (Main with ensuite Shower), laundry / store, back yard and a front balcony. Optional lock up and interconnecting garages available at an extra cost.

## Features

- ✓ Ceramic Floor
- ✓ En Suite
- ✓ Gypsum Plastering
- ✓ Skirting
- ✓ Double Glazed
- ✓ Video Hall Porter
- ✓ Entrance Hall
- ✓ PVC Piping
- ✓ Passenger Lift
- ✓ Balcony

## Rooms

- ✓ Kitchen/Living/Dining : 7.5 x 5.8 m (43.5 m<sup>2</sup>)
- ✓ Double Bedroom : 4 x 4 m (16 m<sup>2</sup>)
- ✓ Double Bedroom : 3.4 x 3.2 m (10.88 m<sup>2</sup>)
- ✓ Double Bedroom : 4.5 x 3.3 m (14.85 m<sup>2</sup>)
- ✓ Bathroom : 1.9 x 1.8 m (3.42 m<sup>2</sup>)
- ✓ Shower Ensuite : 1.8 x 2.2 m (3.96 m<sup>2</sup>)
- ✓ Laundry : 1.5 x 1 m (1.5 m<sup>2</sup>)
- ✓ Open Space : 2 x 4 m (8 m<sup>2</sup>)
- ✓ Open Space : 4 x 6 m (24 m<sup>2</sup>)

# Gallery





**Manuel Borg**

RE/MAX Excellence - Piazzetta

M: 79494425

E: manuel@remax.com.mt

T: 21341341

**RE/MAX Excellence - Piazzetta**

114B, Tower Road, Sliema, Malta