

# Apartment in Swieqi



Swieqi, Sliema and St Julians Surroundings



**€535,000**

Reference No: 240221028-3114

 Total Rooms: 7

 Floor Area (m<sup>2</sup>) : 140

 Bathrooms: 2

 Bedrooms: 3

# Apartment - For Sale - Swieqi

SWIEQI - A brand new Apartment which is currently under construction and will be complete by end 2026. This large apartment is being sold fully finished excluding internal doors and comprising of a wide fronted and spacious layout. Comprising is an open plan kitchen / living / dining room, 3 double bedrooms, 2 bathrooms (Main with ensuite Shower), laundry / store and 2 balconies. Optional lock up and interconnecting garages available at an extra cost.

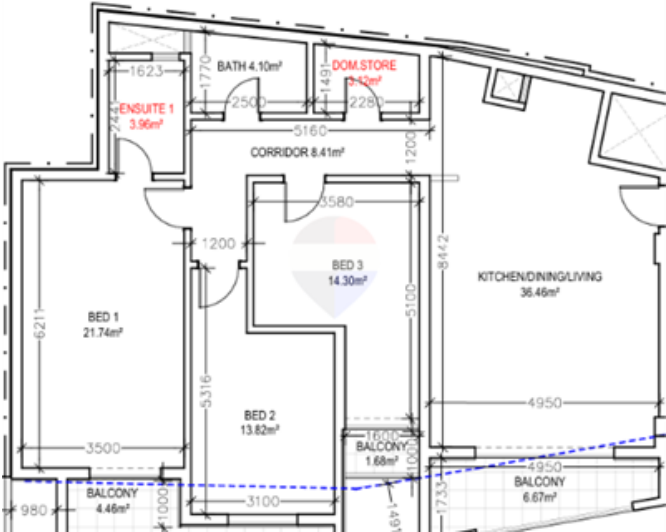
## Features

- ✓ Ceramic Floor
- ✓ En Suite
- ✓ Gypsum Plastering
- ✓ Skirting
- ✓ Double Glazed
- ✓ Video Hall Porter
- ✓ Entrance Hall
- ✓ PVC Piping
- ✓ Passenger Lift
- ✓ Balcony

## Rooms

- ✓ Kitchen/Living/Dining : 8.44 x 5 m (42.2 m<sup>2</sup>)
- ✓ Double Bedroom : 4 x 3.6 m (14.4 m<sup>2</sup>)
- ✓ Double Bedroom : 4.6 x 3.1 m (14.26 m<sup>2</sup>)
- ✓ Double Bedroom : 6.2 x 3.5 m (21.7 m<sup>2</sup>)
- ✓ Bathroom : 1.8 x 2.5 m (4.5 m<sup>2</sup>)
- ✓ Shower Ensuite : 2.4 x 1.6 m (3.84 m<sup>2</sup>)
- ✓ Laundry : 1.5 x 2.3 m (3.45 m<sup>2</sup>)
- ✓ Open Space : 1 x 4.4 m (4.4 m<sup>2</sup>)
- ✓ Open Space : 1.7 x 7 m (11.9 m<sup>2</sup>)

# Gallery





**Manuel Borg**

RE/MAX Excellence - Piazzetta

M: 79494425

E: manuel@remax.com.mt

T: 21341341

**RE/MAX Excellence - Piazzetta**

114B, Tower Road, Sliema, Malta