

# Penthouse in Birzebbuga



**Birzebbuga, South**



**€430,000**

Reference No: 240221028-3020

 Total Rooms: **6**

 Floor Area (m<sup>2</sup>) : **100**

 Bathrooms: **2**

 Bedrooms: **2**

# Penthouse - For Sale - Birzebbuga

BIRZEBBUGA - A new Penthouse is being offered off plan is being offered in a Shell form state with an option to finish at an extra cost. This south facing block is situated in great location, all getting unobstructed valley views and distant seaviews. These 2 bedroom penthouse comprises of an open plan Kitchen, living and dining area which leads to sizeable terrace, 2 double bedrooms (main with ensuite and walkin wardrobe), a main bathroom and a front terrace ideal for entertaining. All common parts will be highly finished and completion in shell for will by end '26. Freehold

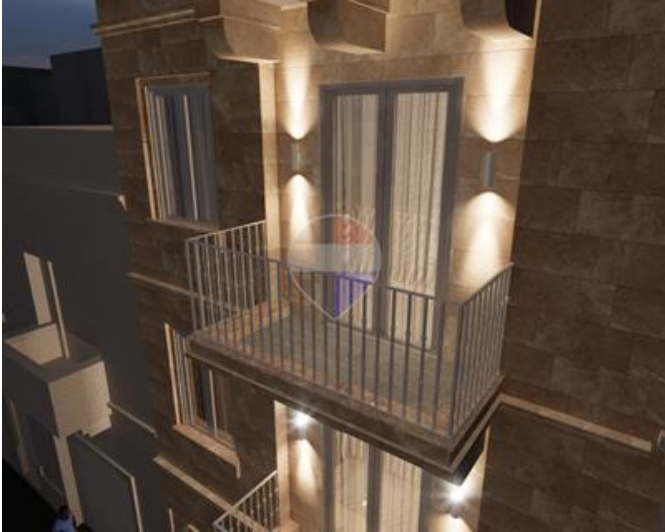
## Features

- ✓ En Suite
- ✓ Passenger Lift
- ✓ Balcony
- ✓ Entrance Hall
- ✓ Air Space
- ✓ Video Intercom

## Rooms

- ✓ Kitchen/Living/Dining : 5 x 4.3 m (21.5 m2)
- ✓ Double Bedroom : 4.2 x 3 m (17.64 m2)
- ✓ Shower Ensuite : 2.4 x 1 m (2.4 m2)
- ✓ Walk In Wardrobe : 2.4 x 2.3 m (5.52 m2)
- ✓ Double Bedroom : 2.6 x 3.5 m (9.1 m2)
- ✓ Bathroom : 1.6 x 2 m (3.2 m2)
- ✓ Open Space : 3 x 5.5 m (16.5 m2)
- ✓ Open Space : 2.5 x 4.3 m (10.75 m2)

# Gallery







**Manuel Borg**

RE/MAX Excellence - Piazzetta

M: 79494425

E: manuel@remax.com.mt

T: 21341341

**RE/MAX Excellence - Piazzetta**

114B, Tower Road, Sliema, Malta