

# Penthouse in Naxxar



**Naxxar, Central**



**€760,000**

Reference No: 240221028-1567

 Total Rooms: **11**

 Floor Area (m<sup>2</sup>) : **287**

 Bathrooms: **3**

 Bedrooms: **3**

# Penthouse - For Sale - Naxxar

NAXXAR - A stunning corner PENTHOUSE having 180 degrees panoramic views including of Mdina, Gozo and distant sea views. This unique property has a total footprint of 287 sqm of which 156sqm is internal and 131 sqm is external. When entering the penthouse you are welcomed with a spacious hall leading to a massive terrace or to the kitchen / living / dining room which enjoys spectacular views of the Mosta dome. Also comprising are 3 double bedrooms main having a walk in wardrobe and ensuite, another ensuite shower room, main bathroom, box room, pantry, storage area and laundry. It is being sold fully finished excluding internal doors and bathrooms and with raised flooring in the terrace. Optional 1 or 2 car lock up garages at an extra cost.

## Features

- ✓ Ceramic Floor
- ✓ Entrance Hall
- ✓ Gypsum Plastering
- ✓ Raised Floor
- ✓ Double Glazed
- ✓ Air Space
- ✓ En Suite
- ✓ Soffit Ceilings
- ✓ Skirting
- ✓ Passenger Lift
- ✓ Terrace
- ✓ Balcony

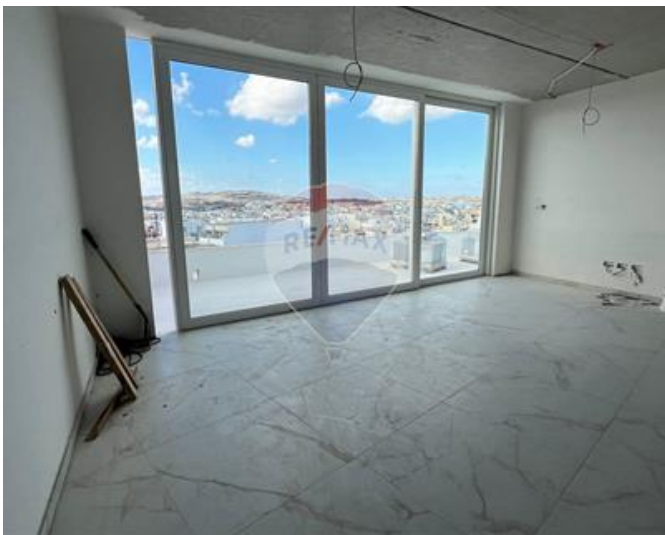
## Rooms

- ✓ Hall : 4 x 2.5 m (10 m2)
- ✓ Kitchen/Living/Dining : 7 x 6.15 m (43.05 m2)
- ✓ Kitchen Pantry : 1 x 1.77 m (1.77 m2)
- ✓ Double Bedroom : 4.37 x 3.04 m (13.28 m2)
- ✓ Double Bedroom : 5.87 x 3.5 m (20.55 m2)
- ✓ Double Bedroom : 3.43 x 3.55 m (12.18 m2)
- ✓ Walk In Wardrobe : 2.45 x 1.2 m (2.94 m2)
- ✓ Bathroom : 2 x 3.5 m (7 m2)
- ✓ Shower Ensuite : 2.97 x 1.67 m (4.96 m2)
- ✓ Shower Ensuite : 1 x 2.4 m (2.4 m2)

- ✓ Box Room : 1.2 x 1.6 m (1.92 m<sup>2</sup>)
- ✓ Laundry : 1 x 1.2 m (1.2 m<sup>2</sup>)
- ✓ Open Space : 4 x 32.7 m (130.8 m<sup>2</sup>)

# Gallery







**Manuel Borg**

RE/MAX Excellence - Piazzetta

M: 79494425

E: manuel@remax.com.mt

T: 21341341

**RE/MAX Excellence - Piazzetta**

114B, Tower Road, Sliema, Malta