

Penthouse in St Julian's



St Julian's, Sliema and St Julians Surroundings



€980,000

Reference No: 240221028-1330

 Total Rooms: 7

 Floor Area (m²) : 198

 Bathrooms: 2

 Bedrooms: 3

Penthouse - For Sale - St Julian's

PENDERGARDENS- A beautiful designer finished PENTHOUSE in Pendergardens is now available for sale. It is a very spacious three bedroom penthouse with openly planned and well zoned kitchen/dining and large inviting living room, main bathroom, shower en-suite in the master bedroom and over 60sqm of outdoor space with outdoor furniture. No expense has been spared to finish this property, it was very well planned and designed by a group of foreign designers, best materials were chosen for the finishes, best quality furniture was ordered to make the place a perfect home. The features include, but are not limited to carpeted flooring throughout, bathrooms made up with whole granite pieces which are also present on the terrace, full size terrace awnings creating shade and privacy for outside dining. The state of the art finishes make this a one of a kind property a cozy family residence. Penthouse is being sold furnished. Must be seen to be truly appreciated! Interconnected car space is included in the price..

Features

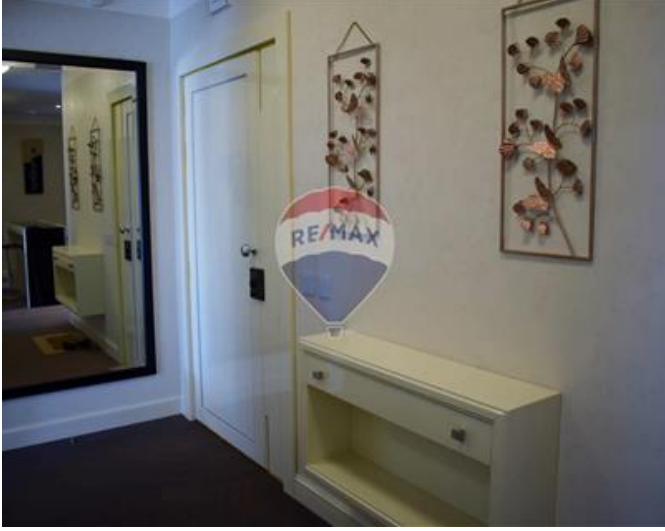
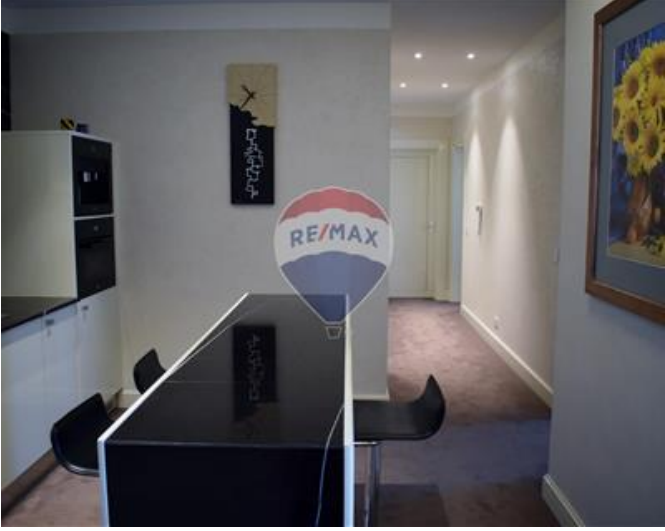
- ✓ Lift
- ✓ Video Hall Porter
- ✓ Entrance Hall
- ✓ Electricity Utility
- ✓ Passenger Lift
- ✓ Terrace
- ✓ CCTV
- ✓ Communal Pool
- ✓ Ceramic Floor
- ✓ En Suite
- ✓ Water Utility
- ✓ Skirting
- ✓ Double Glazed
- ✓ Video Intercom
- ✓ Alarm System

Rooms

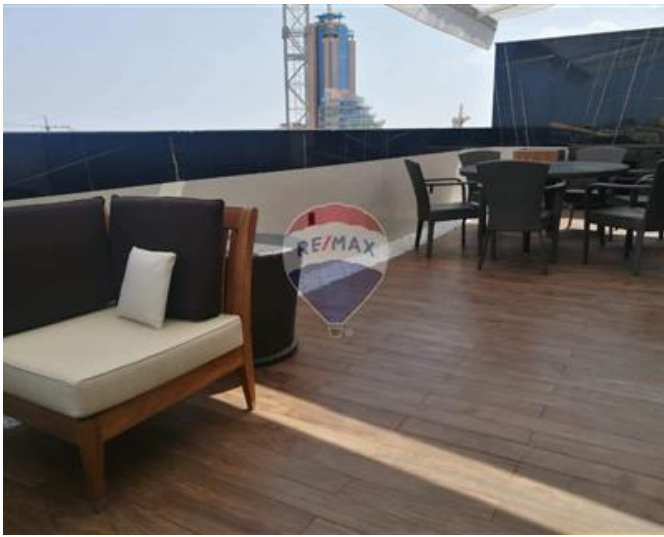
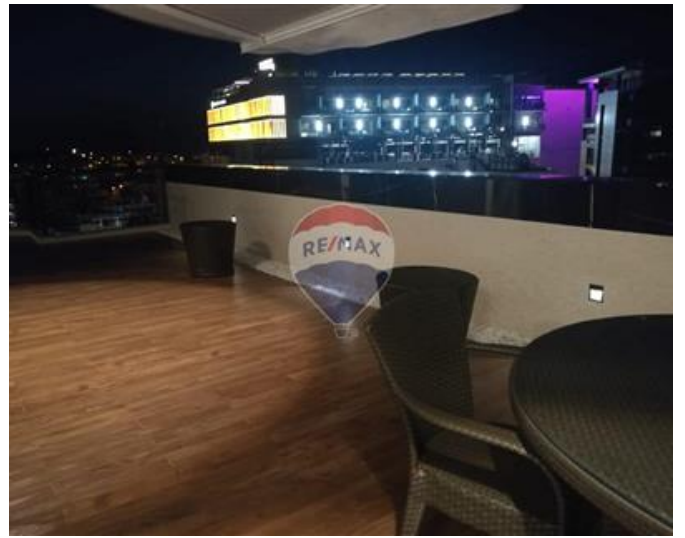
- ✓ Kitchen : 4.2 x 2.8 m (11.76 m2)
- ✓ Living : 5.7 x 4.8 m (27.36 m2)
- ✓ Double Bedroom : 4.6 x 3.6 m (16.56 m2)
- ✓ Double Bedroom : 4.4 x 4.3 m (18.92 m2)
- ✓ Double Bedroom : 4.4 x 3.2 m (14.08 m2)
- ✓ Hall : 3.9 x 1.5 m (5.85 m2)

- ✓ Shower : 2.6 x 2.3 m (5.98 m²)
- ✓ Bathroom Ensuite : 2.3 x 1.8 m (4.14 m²)
- ✓ Open Space : 12.6 x 3.3 m (41.58 m²)
- ✓ Open Space : 4.5 x 4 m (18 m²)

Gallery











Manuel Borg

RE/MAX Excellence - Piazzetta

M: 79494425

E: manuel@remax.com.mt

T: 21341341

RE/MAX Excellence - Piazzetta

114B, Tower Road, Sliema, Malta