

# Penthouse in Swieqi



Swieqi, Sliema and St Julians Surroundings



**€3,500**

Reference No: 240221008-1775

 Total Rooms: **5**

 Floor Area (m<sup>2</sup>): **0**

 Bathrooms: **3**

 Bedrooms: **2**

# Penthouse - For Rent - Swieqi

LUXURIOUS PENTHOUSE SWIEQI Extraordinary and elegant brand new luxurious penthouse with a massive front terrace for relaxing and entertaining with family and friends, this unique residence is ideal for those seeking ultimate comfort and style in a quiet, yet very central and much sought after residential, with shops, restaurants, leisure facilities and parks a short stroll away. Boasting an impressive 217 sqm overall floor area and having a striking finish including lovely wooden style tiling with a contemporary Scandi look and feel throughout, paired with warm and cozy rustic antique pieces from interior design guru Pippa Toledo, create a stylish and eclectic design rarely seen. Set atop a smart block of five units, the penthouse is naturally filled with beautiful sunlight from the lavish front terrace, furnished with high quality dining table, armchairs and sofas, perfect for relaxing, dining, entertaining and sun bathing, as well as comfortably shaded by motorized awning for those hot summer days. For extra comfort, the terrace doors are equipped with mosquito nets and have dimout roller blinds for absolute flexibility when further privacy or reduced sunlight is preferred. Entertaining friends and family indoors is also a breeze, with an 8 seat stylish dining table, two large inviting sofas, and a stylish armchair. A spacious kitchen with Bosch appliances, water filtration system and a gas hob island with bar stools, makes cooking fun. Fully air conditioned and equipped with smart TV and high speed wifi already installed enhancing a comfortable and modern lifestyle. The sleeping quarters entail a fabulous master bedroom with a superking size bed, a small lounge area with dressing table, a very large walk-in wardrobe to fit all your precious clothes and shoes, and an ensuite bathroom with the full luxury and convenience of dual sinks, a shower, a bathtub, a toilet and a bidet. The second double bedroom also spacious, has its own ensuite shower room for absolute privacy and convenience, as well as a large wardrobe. Both bedrooms include blackout roller blinds. Further complimenting this most wonderful property is a laundry room with washing machine and tumble dryer, a guest toilet, a wide back terrace with sun bed, a basement-level luggage room, and an optional interconnected car space.

## Features

- ✓ Lift
- ✓ Ceramic Floor
- ✓ A/C
- ✓ Balcony
- ✓ Kitchen/Dinette
- ✓ En Suite
- ✓ Double Glazed

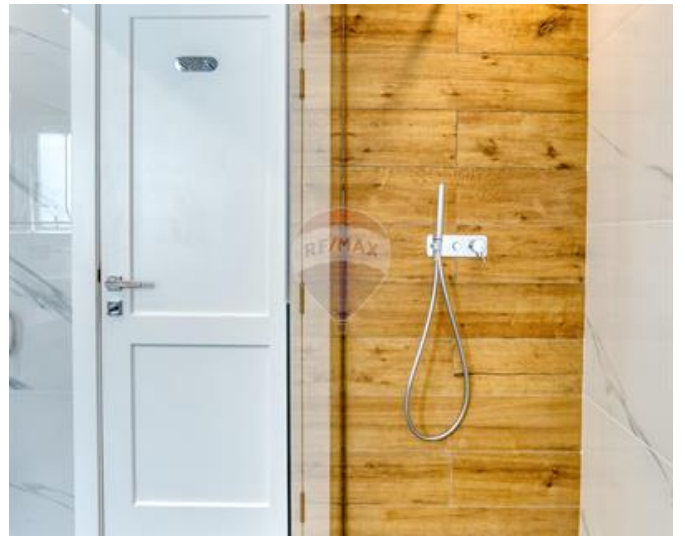
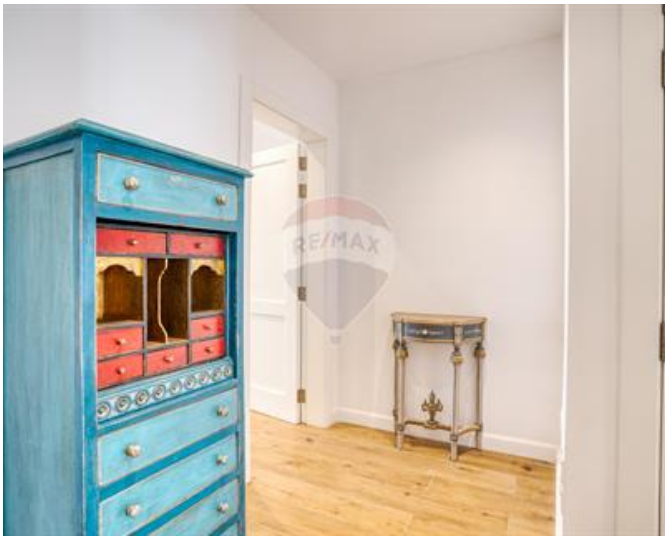
## Rooms

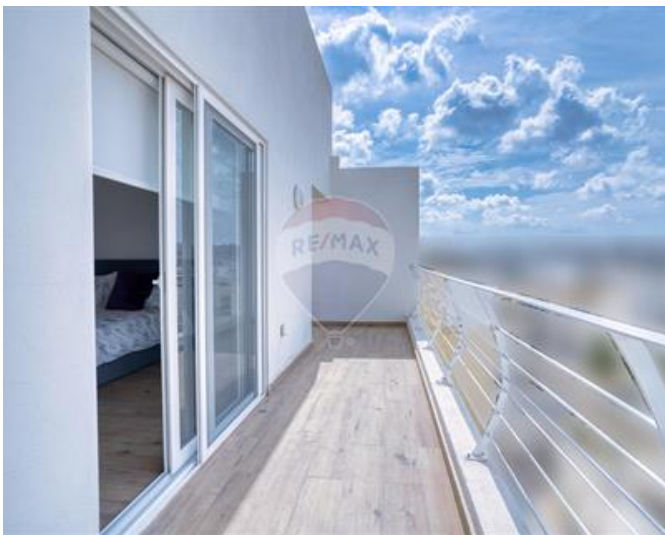
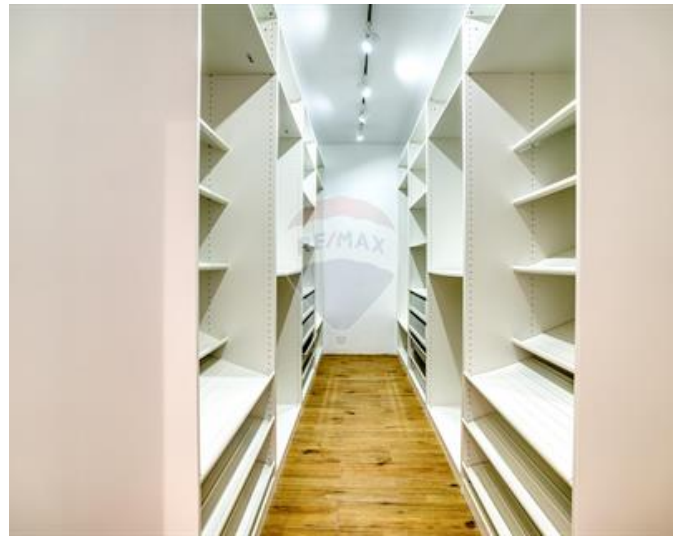
- ✓ Double Bedroom : 0 x 0 m (0 m2)
- ✓ Double Bedroom : 0 x 0 m (0 m2)

- ✓ Bathroom : 0 x 0 m (0 m2)
- ✓ Bathroom Ensuite : 0 x 0 m (0 m2)
- ✓ Bathroom Ensuite : 0 x 0 m (0 m2)

# Gallery











**RE/MAX Excellence - Piazzetta Sliema**  
RE/MAX Excellence - Piazzetta

M: 21341341

E: pzt@remax.com.mt

T: 21341341

**RE/MAX Excellence - Piazzetta**  
114B, Tower Road, Sliema, Malta