

Villa Detached in San Pawl tat Targa



San Pawl tat Targa, Central



€4,100,000

Reference No: 240171030-899

 Total Rooms: **13**

 Floor Area (m²) : **630**

 Bathrooms: **4**

 Bedrooms: **4**

Villa Detached - For Sale - San Pawl tat Targa

Set within one of Malta's most coveted villa enclaves, this extraordinary, impeccably finished residence sits on over 600sqm of prime land, offering a rare blend of architectural elegance, privacy, and indulgent modern living. Designed across three magnificent floors, this home celebrates space and light through premium finishes, and a commanding build envelope, all connected by an impressive steel-and-glass feature staircase and a lift serving every level. The heart of the home unfolds on the ground floor, where seamless open-plan living meets refined comfort. On one side, a luxury kitchen, living, and dining space flows effortlessly onto the outdoors, while a separate formal sitting room and study enjoy serene views of the residence's showpiece exterior. Step outside to an extended private oasis—a salt-water infinity pool, golden-hour sundeck, BBQ and lounge areas—the perfect backdrop for sophisticated entertaining and sunset relaxation. At this level the property is also enhanced with a practical 2/3 car private drive (near entrance) suitable for outside deliveries or comfortable quick access parking. Ascending to the upper levels, one finds four opulent double bedrooms, each boasting a private ensuite and walk-in wardrobe, offering sanctuary, elegance, and absolute discretion. The lower level elevates the lifestyle experience even further with a designer games room finished in parquet, a self-contained flatlet with bathroom, and a 5-car garage, a true luxury in its own right. Every inch of this home has been crafted without compromise—from marble and micro-cement finishes to bespoke detailing and the finest materials, creating a property that is as breathtaking as it is rare. A statement home of undeniable calibre—where comfort, luxury, and exclusivity converge. A true jewel of San Pawl Tat-Targa. Contact us to schedule a private viewing.

Features

- ✓ Lift
- ✓ Ceramic Floor
- ✓ Walk in Wardrobe
- ✓ Fire Place Heating
- ✓ Marble Floor
- ✓ Electricity Utility
- ✓ 3 Phase Electricity
- ✓ A/C
- ✓ Intelligent Lighting
- ✓ Fire Safety
- ✓ Automatic door
- ✓ En Suite
- ✓ Entrance Hall
- ✓ Floors - Hardwood
- ✓ Water Utility
- ✓ PVC Piping
- ✓ Towel Warmers
- ✓ Skirting
- ✓ Wi-Fi
- ✓ Double Glazed

- ✓ Pool
- ✓ Balcony
- ✓ Video Intercom
- ✓ Well
- ✓ Garden

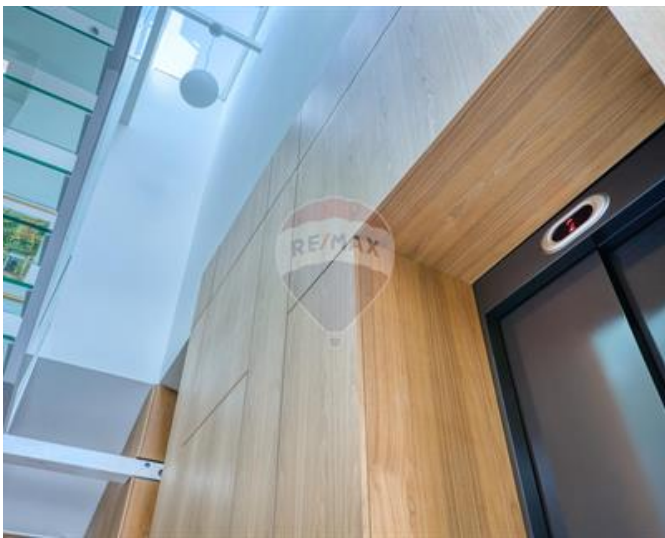
Rooms

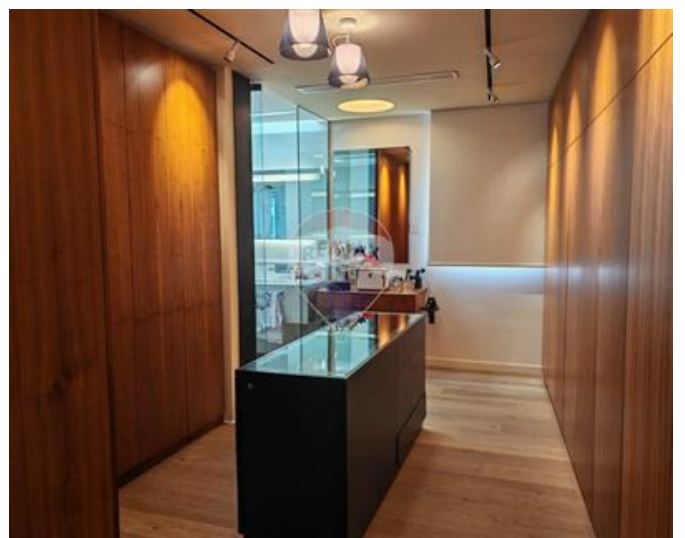
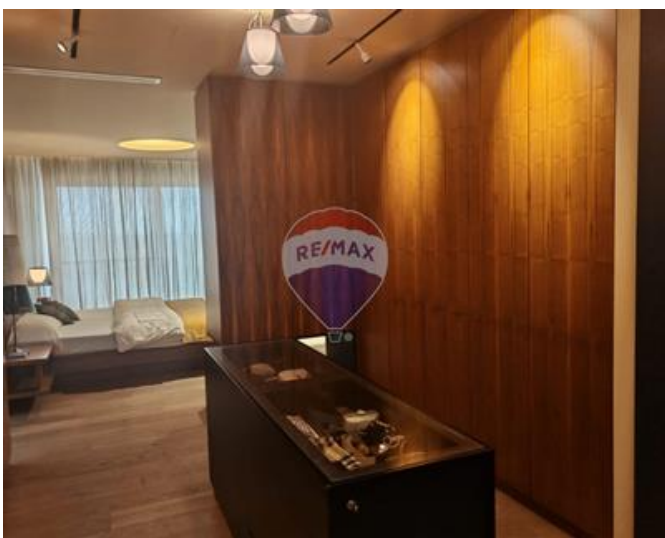
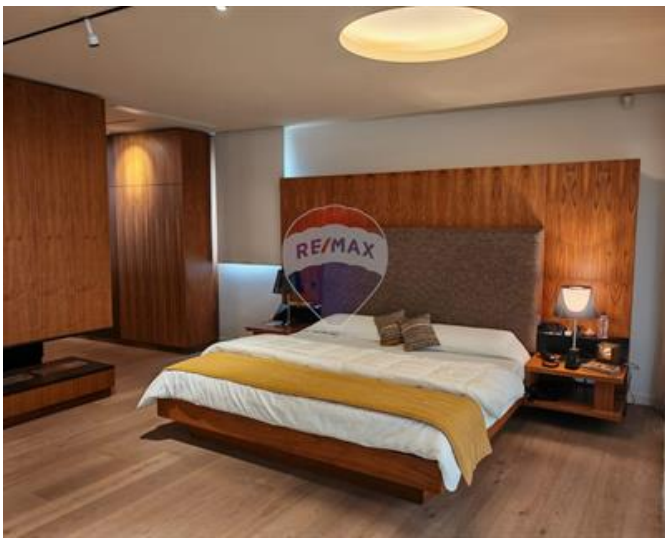
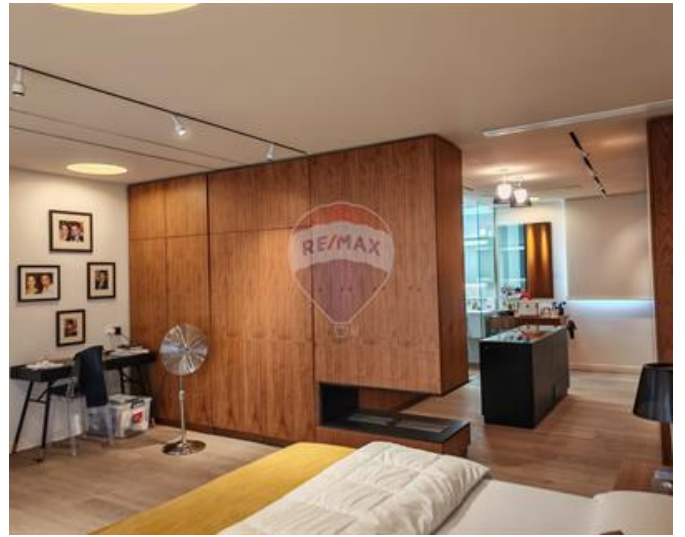
- ✓ Games Room : 6.6 x 6.6 m (43.56 m2)
- ✓ Open Space : 7 x 5.6 m (39.2 m2)
- ✓ Open Space : 3.6 x 5 m (18 m2)
- ✓ Garage : 12.7 x 19 m (241.3 m2)
- ✓ Bathroom : 3 x 3 m (9 m2)
- ✓ Kitchen/Dining : 6.8 x 6.6 m (44.88 m2)
- ✓ Living : 7.1 x 4.6 m (32.66 m2)
- ✓ Guest Toilet : 1 x 3 m (3 m2)
- ✓ Open Space : 2 x 1 m (2 m2)
- ✓ Laundry : 4 x 2 m (8 m2)
- ✓ Open Space : 15 x 5 m (75 m2)
- ✓ Open Space : 12 x 3.2 m (38.4 m2)
- ✓ Double Bedroom : 6.7 x 4.8 m (32.16 m2)
- ✓ Shower Ensuite : 5 x 4 m (20 m2)
- ✓ Walk In Wardrobe : 4 x 2 m (8 m2)
- ✓ Double Bedroom : 5.55 x 7.5 m (41.63 m2)
- ✓ Shower Ensuite : 1.5 x 1.5 m (2.25 m2)
- ✓ Double Bedroom : 3.5 x 3.7 m (12.95 m2)
- ✓ Double Bedroom : 5.6 x 3.5 m (19.6 m2)
- ✓ Open Space : 1.5 x 3.5 m (5.25 m2)

Gallery















Onyx Dimech

RE/MAX Specialists - Tigne Point

M: 99996035

E: onyx@remax.com.mt

T: 21339121

RE/MAX Specialists - Tigne Point

RU21A, The Point Shopping Mall, Tigne Point, Sliema, Malta