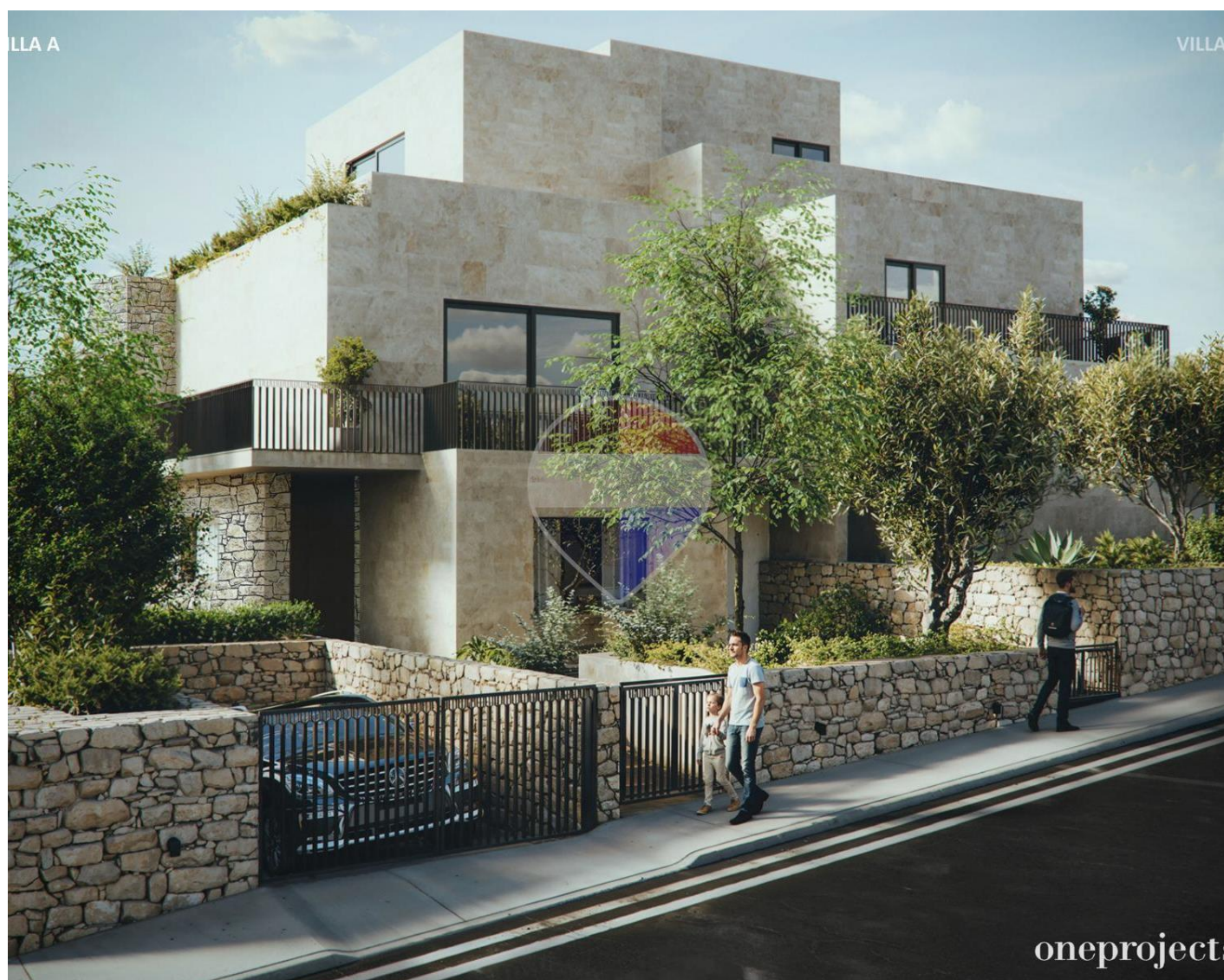


Villa Semi-detached in Madliena



Madliena, Sliema and St Julians Surroundings



€4,150,000

Reference No: 240171020-112

 Total Rooms: **15**

 Floor Area (m²) : **491**

 Bathrooms: **4**

 Bedrooms: **4**

Villa Semi-detached - For Sale - Madliena

New to the market and rare to come by is this modern semi-detached villa, to be offered finished to very high standards, located in a prime location of Madliena. This 500 sqm villa is superbly designed, offering ample light, space and comfort to accommodate anyone looking for indoor/outdoor entertainment space as well as a modern family home. Accommodation in the form of a wide entrance hall giving onto a 100sqm open-plan kitchen/living/dining area facing a spacious back and surrounding garden measuring roughly 335sqm, including a 35sqm pool, study and guest bathroom on the ground level. The bedroom quarters on the first floor are smartly designed to provide space, light and comfort to every room, having surrounding terraces throughout with side sea and valley views. A 40 sqm corner main bedroom designed with its own large walk-in and spacious en-suite giving onto a corner terrace and two additional double bedrooms, circa 25 sqm each, also having their own walk-in/en-suite areas. On the second floor, one finds a secondary 30 sqm living/gym area and shower overlooking spacious front and back roof terraces with a pool with open-side views of Madliena. To further complement this modern property is an underlying basement measuring roughly 265 sqm which incorporates a flatlet, storage, a games room and an interconnecting 3-car lock-up garage as well as a lift servicing all floors to roof level. Viewings are highly recommended!

Features

- ✓ A/C

Rooms

- ✓ Kitchen/Living/Dining : 11.1 x 9 m (99.9 m²)
- ✓ Kitchen Pantry : 2.58 x 1.32 m (3.41 m²)
- ✓ Box Room : 3.3 x 1.1 m (3.63 m²)
- ✓ Guest Toilet : 1.88 x 2.37 m (4.46 m²)
- ✓ Office / Study : 4 x 2.35 m (9.4 m²)
- ✓ Double Bedroom : 5.02 x 4.12 m (20.68 m²)
- ✓ Walk In Wardrobe : 2.8 x 2.78 m (7.78 m²)
- ✓ Shower Ensuite : 6.12 x 1.7 m (10.4 m²)
- ✓ Double Bedroom : 4.06 x 5.3 m (21.52 m²)

- ✓ Shower Ensuite : 2.58 x 1.8 m (4.64 m²)
- ✓ Double Bedroom : 5.16 x 3.68 m (18.99 m²)
- ✓ Walk In Wardrobe : 2.8 x 2.2 m (6.16 m²)
- ✓ Double Bedroom : 3.45 x 1.5 m (5.18 m²)
- ✓ Living : 6.04 x 5.48 m (33.1 m²)
- ✓ Shower : 1.75 x 2.72 m (4.76 m²)

Gallery





Nadine Busuttil

RE/MAX Specialists - Tigne Point

M: 79823210

E: nadine@remax.com.mt

T: 21339121

RE/MAX Specialists - Tigne Point

RU21A, The Point Shopping Mall, Tigne Point, Sliema, Malta