

Townhouse in Vittoriosa



Vittoriosa, South



€1,800,000

Reference No: 240171006-2748

 Total Rooms: 16

 Floor Area (m²) : 352

 Bathrooms: 5

 Bedrooms: 6

Townhouse - For Sale - Vittoriosa

Nestled in the heart of historic Vittoriosa, this grand townhouse has been beautifully converted into three fully-equipped apartments, offering a unique investment opportunity. Ground Floor: Welcoming entrance hall leads to a spacious room ideal for meetings or entertaining, a backyard with a spare toilet, and a 1-bedroom apartment complete with kitchen and bathroom. First Floor: Features the second apartment, comprising an entrance hall, two double bedrooms (both with ensuite bathrooms), a walk-in wardrobe, a traditional Maltese wooden balcony, and a fully equipped kitchen. Second Floor: Hosts the third apartment, offering two double bedrooms (both with ensuites), a walk-in wardrobe, front and back balconies, and kitchen. Third Floor: A large additional bedroom with a spare shower and toilet, a back terrace, and two front terraces, perfect for enjoying outdoor space and skyline views. This rare property is ideal as a rental investment or for a boutique guesthouse project, offering space, character, and flexibility in one of Malta's most sought-after and culturally rich localities. Exclusive with RE/MAX! Highly recommended!

Features

- ✓ Kitchen/Dinette
- ✓ Entrance Hall
- ✓ Electricity Utility
- ✓ Skirting
- ✓ Pattern Tiles
- ✓ Air Space
- ✓ Back Yard
- ✓ En Suite
- ✓ Water Utility
- ✓ A/C
- ✓ Partially Furnished
- ✓ Yard
- ✓ Balcony
- ✓ Roof Terrace

Rooms

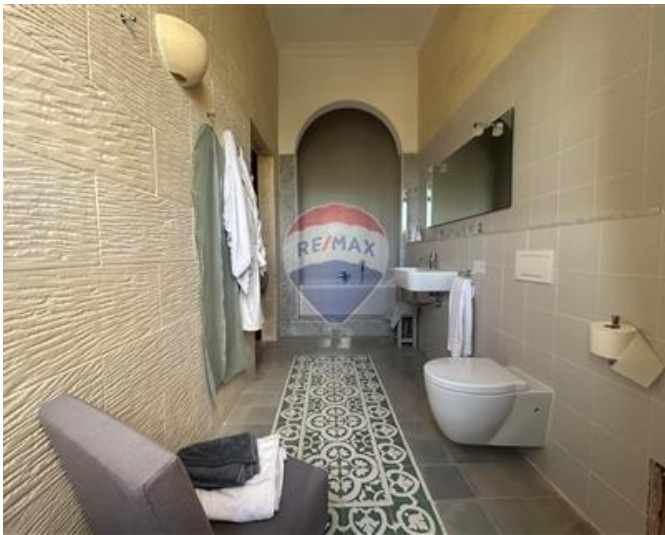
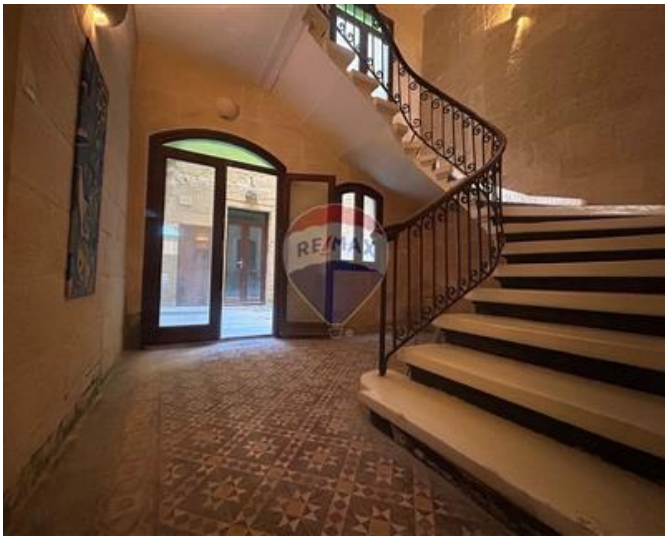
- ✓ Kitchen/Living/Dining : 4.53 x 2.43 m (11.01 m2)
- ✓ Living : 4.54 x 2.43 m (11.03 m2)
- ✓ Living/Dining : 4.53 x 2.43 m (11.01 m2)
- ✓ Sitting/Dining : 4.5 x 5.8 m (26.1 m2)
- ✓ Double Bedroom : 3.5 x 4 m (14 m2)
- ✓ Double Bedroom : 2.7 x 3.41 m (9.21 m2)

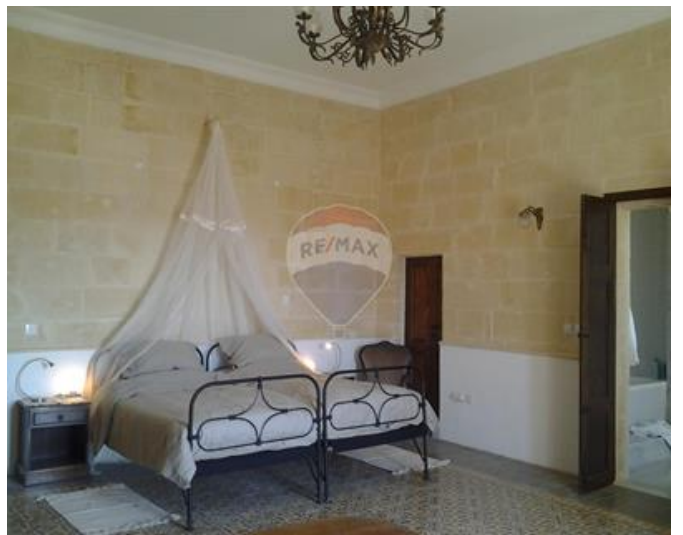
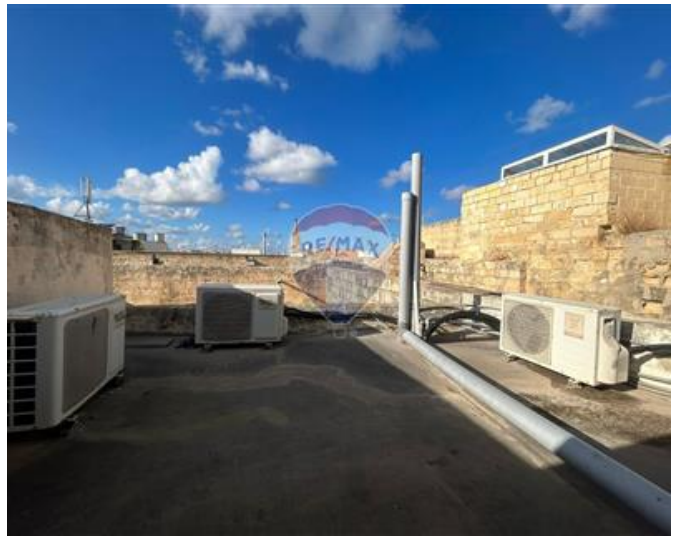
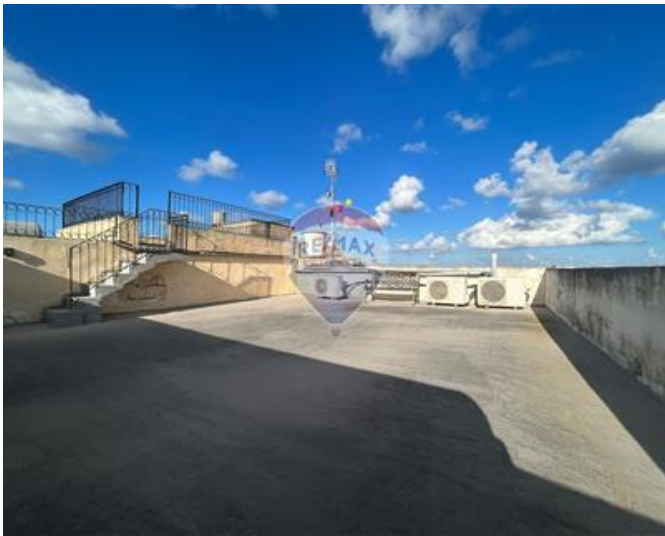
- ✓ Double Bedroom : 6.51 x 4.53 m (29.49 m²)
- ✓ Double Bedroom : 5.59 x 6.6 m (36.89 m²)
- ✓ Double Bedroom : 2.7 x 3.4 m (9.18 m²)
- ✓ Double Bedroom : 4.46 x 2.43 m (10.84 m²)
- ✓ Walk In Wardrobe : 2.6 x 1.9 m (4.94 m²)
- ✓ Hallway : 2.56 x 2.22 m (5.68 m²)
- ✓ Hall : 2.2 x 3.15 m (6.93 m²)
- ✓ Hall : 3.4 x 4.12 m (14.01 m²)
- ✓ Bathroom : 2.14 x 0.98 m (2.1 m²)
- ✓ Bathroom : 1.75 x 4.04 m (7.07 m²)
- ✓ Shower Ensuite : 1.68 x 5.2 m (8.74 m²)
- ✓ Shower Ensuite : 1 x 1.18 m (1.18 m²)
- ✓ Guest Toilet : 1.03 x 0.3 m (0.31 m²)
- ✓ Open Space : 1.4 x 2.3 m (3.22 m²)
- ✓ Open Space : 3 x 0.5 m (1.5 m²)
- ✓ Open Space : 3 x 0.8 m (2.4 m²)
- ✓ Open Space : 3 x 0.8 m (2.4 m²)
- ✓ Open Space : 4 x 3 m (12 m²)
- ✓ Open Space : 7.5 x 8 m (60 m²)
- ✓ Open Space : 3.5 x 5 m (17.5 m²)
- ✓ Open Space : 4.2 x 3.34 m (14.03 m²)

Gallery













Philip Incorvaja

RE/MAX Specialists - Tigne Point

M: 79426774

E: philip@remax.com.mt

T: 21339121

RE/MAX Specialists - Tigne Point

RU21A, The Point Shopping Mall, Tigne Point, Sliema, Malta