

# House of Character in Qrendi




**Qrendi, South**



**€895,000**

Reference No: 240151078-251

 Total Rooms: **14**

 Floor Area (m<sup>2</sup>) : **300**

 Bathrooms: **4**

 Bedrooms: **3**

# House of Character - For Sale - Qrendi

Qrendi - Expertly converted house of character in UCA retaining its original features in the best part of this old village. Property consists of an entrance hall, office with separate entrance, combined sitting/ dining, kitchen with laundry and WC all surrounded by a large and private central courtyard with access to a basement wine cellar. On the first floor one finds three double bedrooms(all with en-suite) and a terrace overlooking the central courtyard. On the 2nd floor there is another large room leading to two roof terraces, one used for entertainment and the other is used for services. This lovely property is being sold partially furnished and ready to move into.

## Features

- ✓ Kitchen/Dinette
- ✓ En Suite
- ✓ Parquet Floor
- ✓ A/C
- ✓ Pattern Tiles
- ✓ Central Courtyard
- ✓ Solar Panels
- ✓ Ceramic Floor
- ✓ Entrance Hall
- ✓ Gypsum Plastering
- ✓ Partially Furnished
- ✓ Terrace
- ✓ Roof Terrace

## Rooms

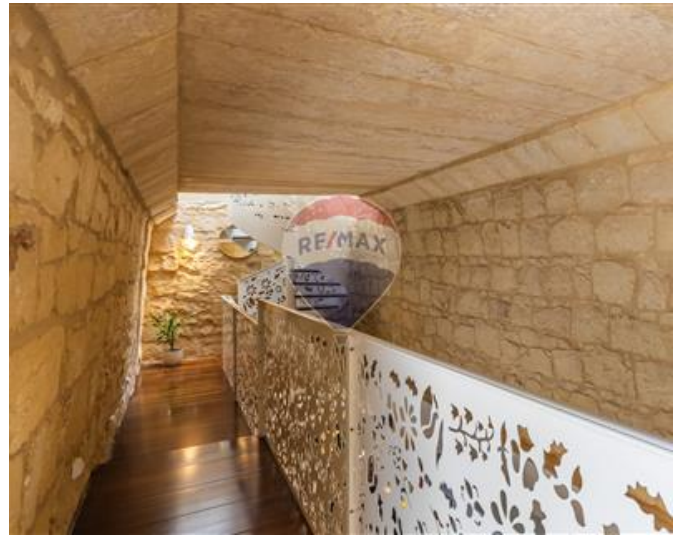
- ✓ Office / Study : 4.76 x 2.2 m (10.47 m<sup>2</sup>)
- ✓ Hall : 4 x 2.38 m (9.52 m<sup>2</sup>)
- ✓ Sitting : 10.37 x 3.51 m (36.4 m<sup>2</sup>)
- ✓ Dining : 10.37 x 3.51 m (36.4 m<sup>2</sup>)
- ✓ Kitchen : 8.2 x 2.9 m (23.78 m<sup>2</sup>)
- ✓ Laundry : 1.9 x 2.9 m (5.51 m<sup>2</sup>)
- ✓ Guest Toilet : 2.5 x 1.2 m (3 m<sup>2</sup>)
- ✓ Open Space : 8.3 x 6.4 m (53.12 m<sup>2</sup>)

- ✓ Double Bedroom : 5.3 x 3.6 m (19.08 m<sup>2</sup>)
- ✓ Bathroom Ensuite : 3.6 x 2.2 m (7.92 m<sup>2</sup>)
- ✓ Double Bedroom : 4.2 x 3.4 m (14.28 m<sup>2</sup>)
- ✓ Bathroom Ensuite : 3.4 x 1.5 m (5.1 m<sup>2</sup>)
- ✓ Double Bedroom : 8.5 x 3.1 m (26.35 m<sup>2</sup>)
- ✓ Bathroom Ensuite : 1.5 x 3.1 m (4.65 m<sup>2</sup>)
- ✓ Open Space : 1.9 x 2.47 m (4.69 m<sup>2</sup>)
- ✓ Laundry : 7.3 x 3.3 m (24.09 m<sup>2</sup>)
- ✓ Open Space : 4 x 3.9 m (15.6 m<sup>2</sup>)
- ✓ Open Space : 8 x 3.5 m (28 m<sup>2</sup>)
- ✓ Open Space : 7.6 x 3.9 m (29.64 m<sup>2</sup>)
- ✓ Open Space : 10 x 4 m (40 m<sup>2</sup>)
- ✓ Cellar : 8 x 3.5 m (28 m<sup>2</sup>)

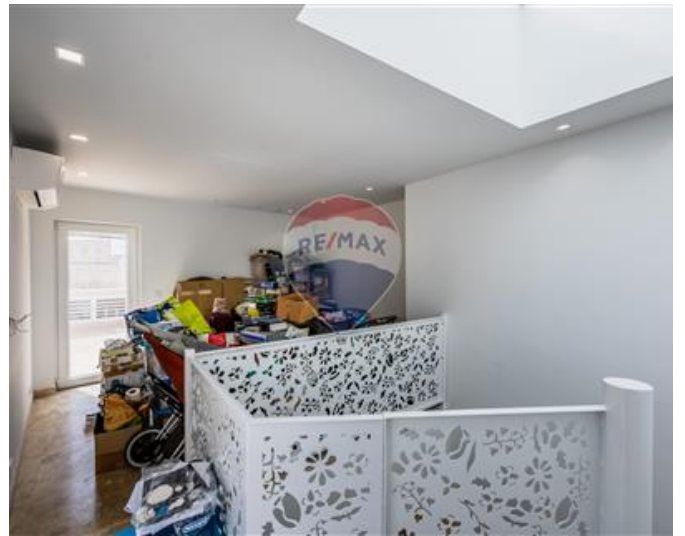
# Gallery

















**Thomas Meachen**

RE/MAX Edge - Attard

M: 99832214

E: [thomas@remax.com.mt](mailto:thomas@remax.com.mt)

T: 21480164

**RE/MAX Edge - Attard**

4Triq Antonio Schembri, Attard, Malta