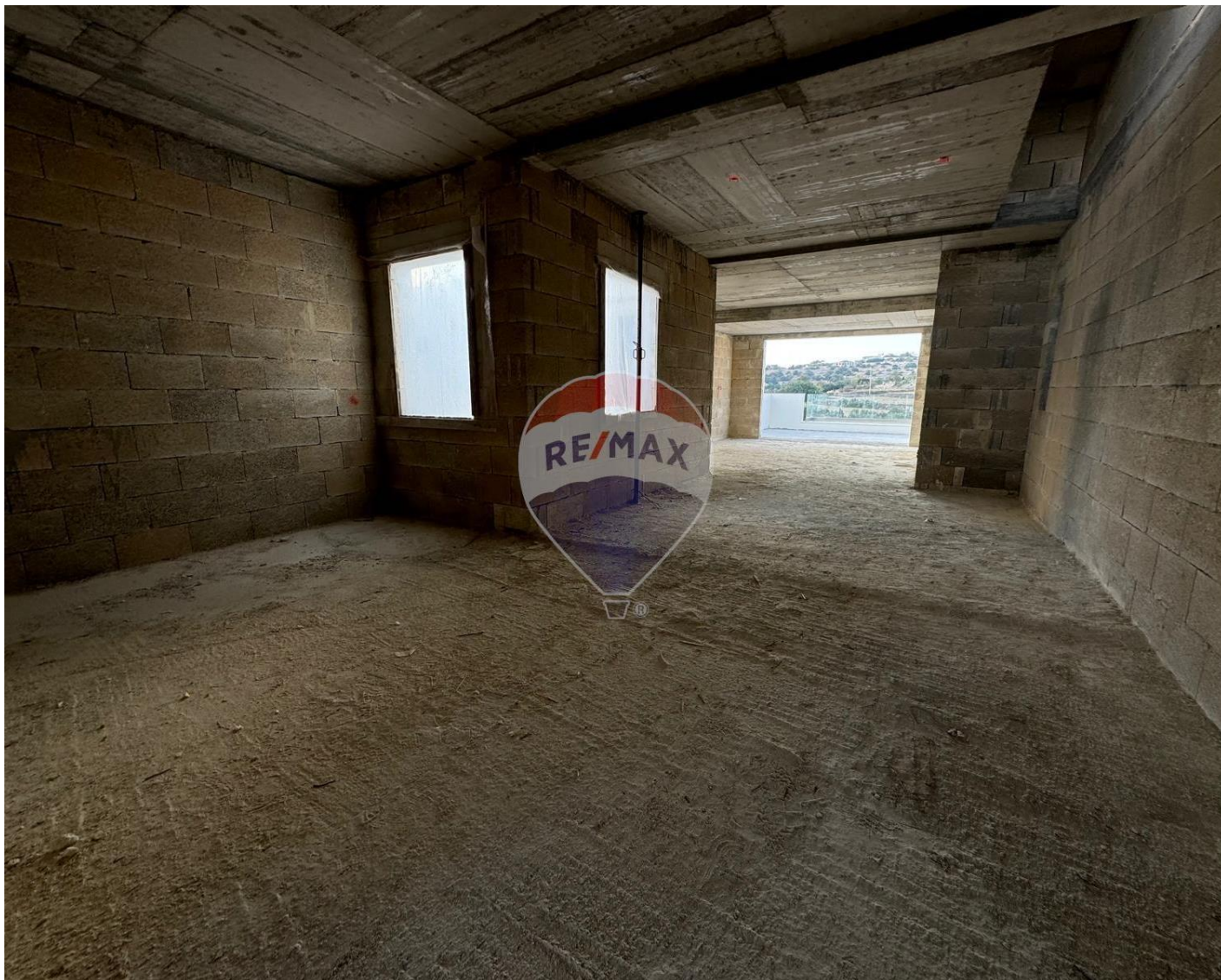


Penthouse in Swieqi




Swieqi, Sliema and St Julians Surroundings



€630,000

Reference No: 240151029-850

 Total Rooms: 7

 Floor Area (m²) : 150

 Bathrooms: 2

 Bedrooms: 2

Penthouse - For Sale - Swieqi

SWIEQI - PENTHOUSE Stunning penthouse in Swieqi with unobstructed valley views and a private pool. This bigger than usual 2-bedroom property features a living room, kitchen with hidden bar, spacious front terrace for entertainment, main bedroom with walk-in closet and en-suite, versatile second bedroom, laundry, pantry, and main bathroom. Access the roof via internal staircase to find a roof garden with a pool. Total area of 270sqm, including 150sqm external space. Sold semi-finished design allows for personalization. Enjoy the countryside location on a quiet road with open views. Internal features include ceramic flooring and double glazed windows, while external features include terrace and balcony.

Features

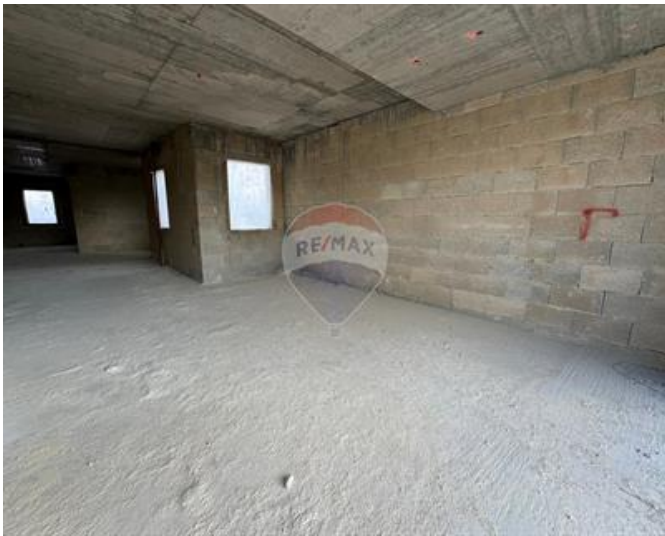
- ✓ Ceramic Floor
- ✓ Double Glazed
- ✓ Balcony
- ✓ Electricity Utility
- ✓ Terrace

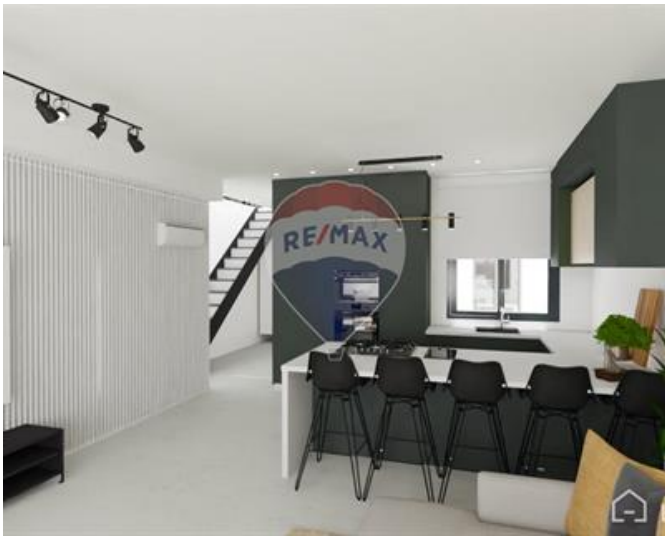
Rooms

- ✓ Bathroom : 2.17 x 2.49 m (5.4 m²)
- ✓ Bathroom Ensuite : 1.5 x 2.45 m (3.68 m²)
- ✓ Kitchen/Living/Dining : 4.87 x 6.71 m (32.68 m²)
- ✓ Double Bedroom : 4.85 x 3.52 m (17.07 m²)
- ✓ Double Bedroom : 3.46 x 4.51 m (15.6 m²)
- ✓ Walk In Wardrobe : 2.15 x 2.45 m (5.27 m²)
- ✓ Open Space : 1.47 x 7.53 m (11.07 m²)
- ✓ Open Space : 6.12 x 4.25 m (26.01 m²)
- ✓ Open Space : 4.52 x 1.52 m (6.87 m²)
- ✓ Laundry : 1.91 x 1.87 m (3.57 m²)

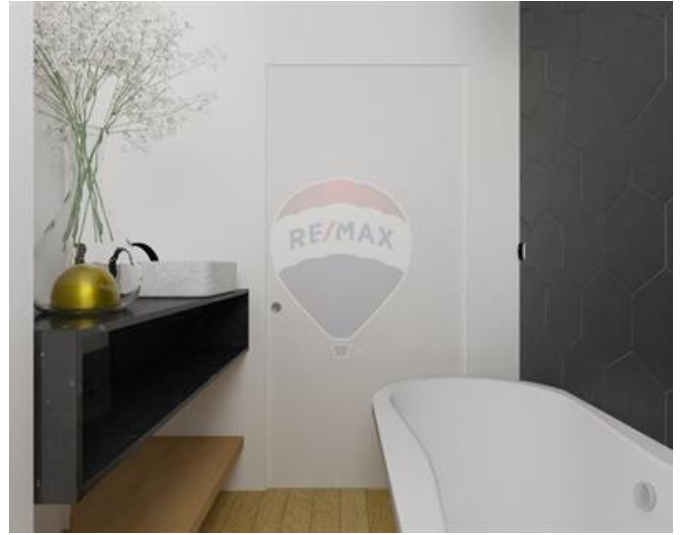
Gallery

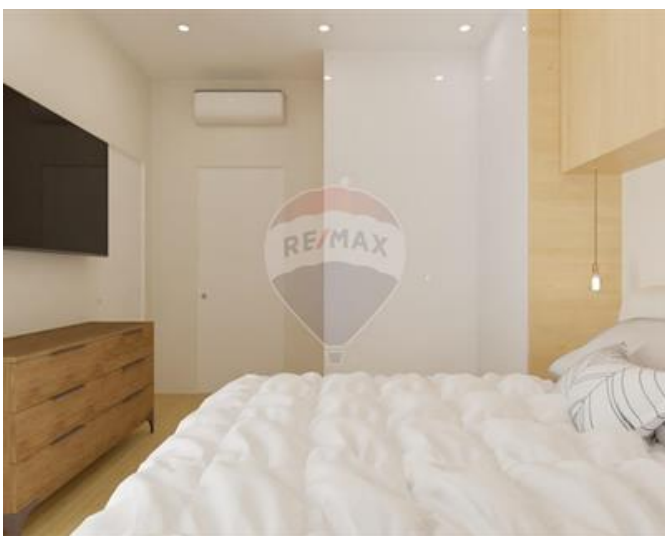
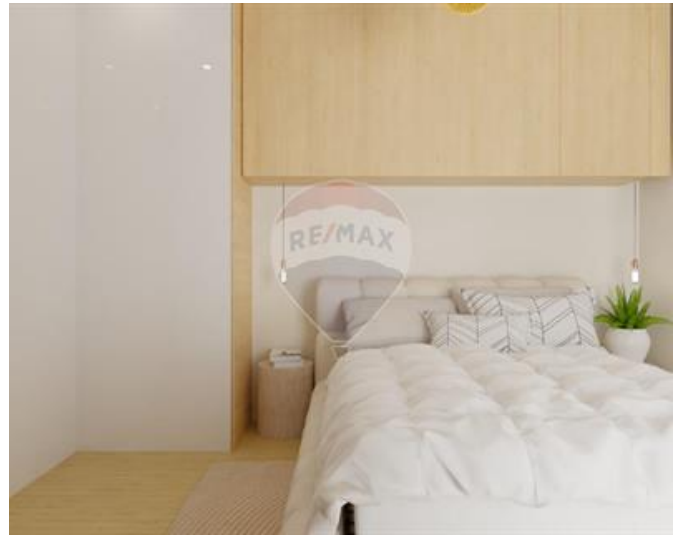
















Kurt Psaila Montefort
RE/MAX Edge - Attard

M: 99009198

E: kpm@remax.com.mt

T: 21480164

RE/MAX Edge - Attard
4Triq Antonio Schembri, Attard, Malta