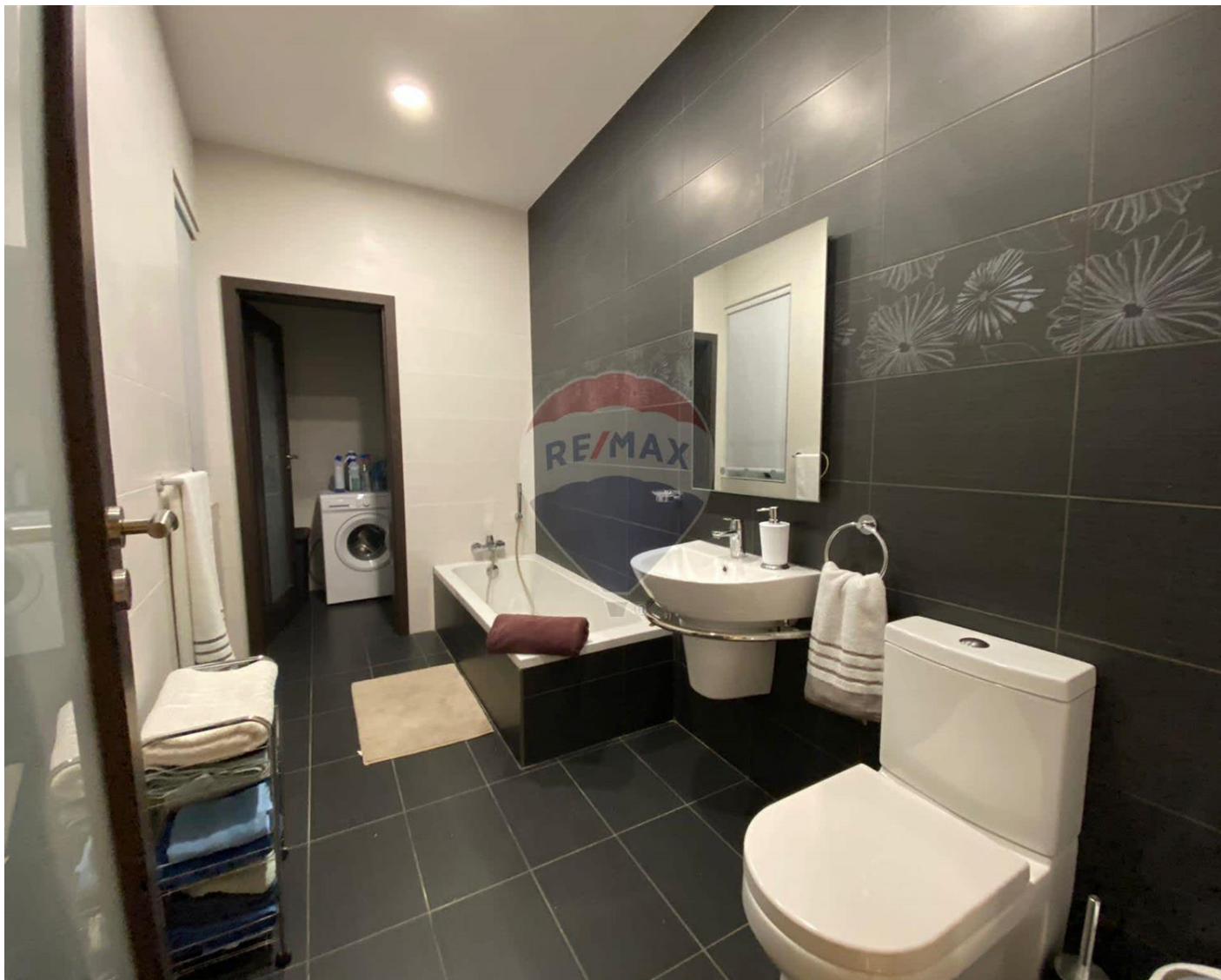


# Apartment in Sliema



**Sliema, Sliema and St Julians Surroundings**



**€2,500**

Reference No: 240151012-3486

 Total Rooms: **5**

 Floor Area (m<sup>2</sup>): **0**

 Bathrooms: **2**

 Bedrooms: **2**

# Apartment - For Rent - Sliema

Sliema - An exquisitely finished seafront, fourth floor corner apartment in the heart of Sliema, just a stone's throw away from all amenities. Layout is in the form of a large and brightly lit kitchen, living and dining area overlooking the promenade, two spacious bedrooms and two bathrooms (one ensuite). Property is being offered fully air-conditioned and serviced with a lift.

## Features

- ✓ Lift
- ✓ Kitchen/Dinette
- ✓ En Suite
- ✓ Gypsum Plastering
- ✓ A/C
- ✓ Balcony

## Rooms

- ✓ Kitchen/Living/Dining : 0 x 0 m (0 m2)
- ✓ Double Bedroom : 0 x 0 m (0 m2)
- ✓ Double Bedroom : 0 x 0 m (0 m2)
- ✓ Bathroom : 0 x 0 m (0 m2)
- ✓ Bathroom Ensuite : 0 x 0 m (0 m2)

# Gallery









**RE/MAX Edge - Attard**

RE/MAX Edge - Attard

M: 21480164

E: attard@remax.com.mt

T: 21480164

**RE/MAX Edge - Attard**

4Triq Antonio Schembri, Attard, Malta