

Penthouse in Swieqi



Swieqi, Sliema and St Julians Surroundings



€2,000

Reference No: 240151012-3470

 Total Rooms: **6**

 Floor Area (m²) : **170**

 Bathrooms: **2**

 Bedrooms: **3**

Penthouse - For Rent - Swieqi

Swieqi - A designer finished penthouse, set in a fantastic location close to all amenities, enjoying plenty of natural light. Layout is in the form of a fully equipped kitchen/living/dining area which leads onto an 85SQM terrace, ideal for entertaining, three double bedrooms (main with an en-suite shower), and a guest bathroom with both a shower and a bath tub. One of the bedrooms can be easily converted into an office or a study. Property is being offered fully furnished, equipped and ready to move into. Optional underlying garages are also available. Viewings are highly recommended!

Features

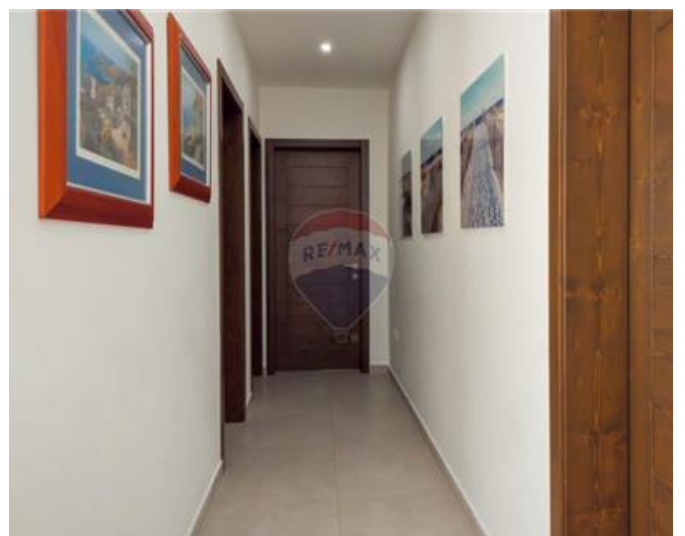
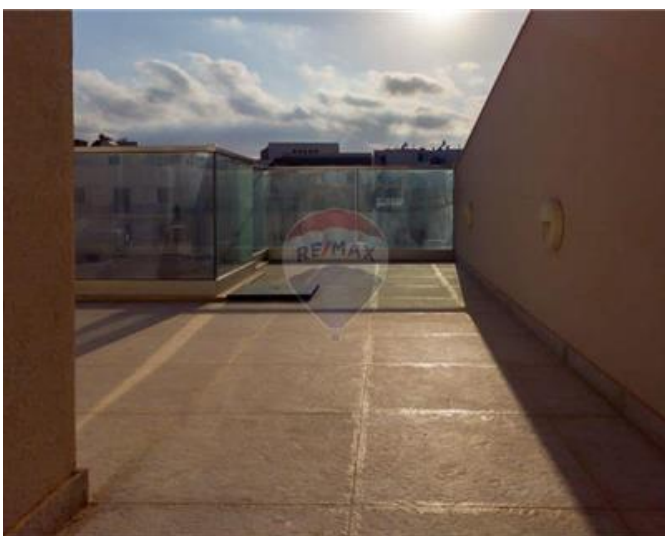
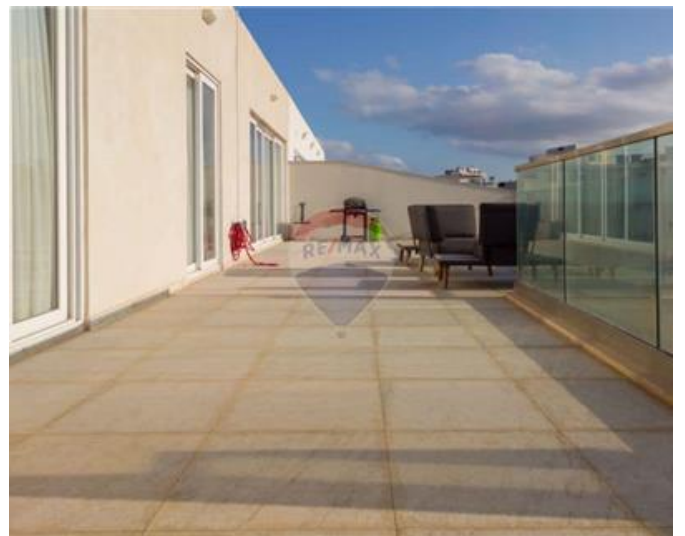
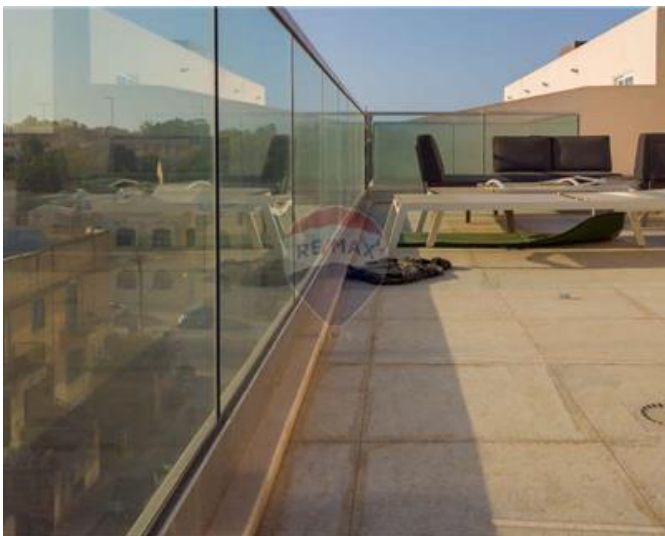
- ✓ Lift
- ✓ En Suite
- ✓ Soffit Ceilings
- ✓ A/C
- ✓ Terrace
- ✓ Ceramic Floor
- ✓ Entrance Hall
- ✓ Gypsum Plastering
- ✓ Skirting

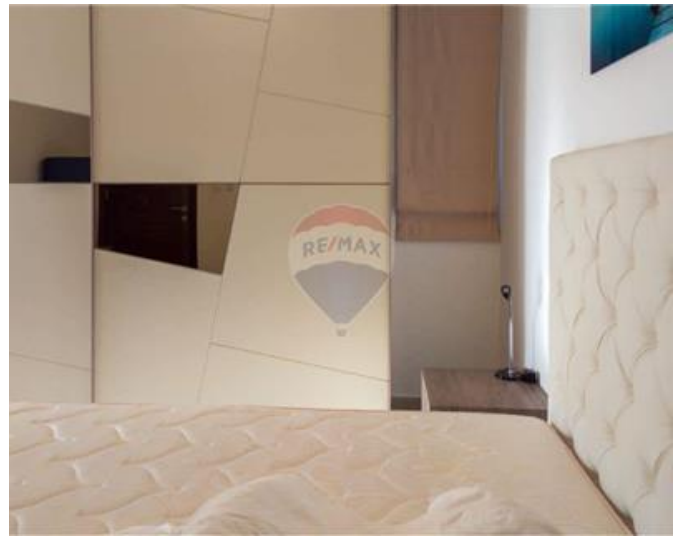
Rooms

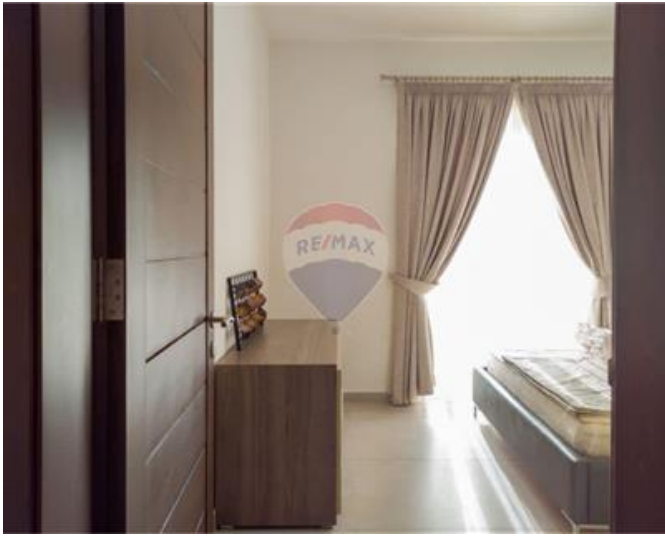
- ✓ Kitchen/Living/Dining : 0 x 0 m (0 m2)
- ✓ Double Bedroom : 0 x 0 m (0 m2)
- ✓ Double Bedroom : 0 x 0 m (0 m2)
- ✓ Double Bedroom : 0 x 0 m (0 m2)
- ✓ Shower Ensuite : 0 x 0 m (0 m2)
- ✓ Bathroom : 0 x 0 m (0 m2)

Gallery













RE/MAX Edge - Attard

RE/MAX Edge - Attard

M: 21480164

E: attard@remax.com.mt

T: 21480164

RE/MAX Edge - Attard

4Triq Antonio Schembri, Attard, Malta