

Maisonette in Swieqi



Swieqi, Sliema and St Julians Surroundings



€1,300

Reference No: 240151012-3125

 Total Rooms: **5**

 Floor Area (m²): **0**

 Bathrooms: **2**

 Bedrooms: **3**

Maisonette - For Rent - Swieqi

Swieqi - Located in one of the best streets of Swieqi, is this second floor Maisonette consisting of an open plan living/dining, with walkout onto the terrace, fully fitted modern kitchen/breakfast, three bedrooms, main with shower en- suite, main bathroom and a washroom. An optional 2-car lock- up garage is also available.

Features

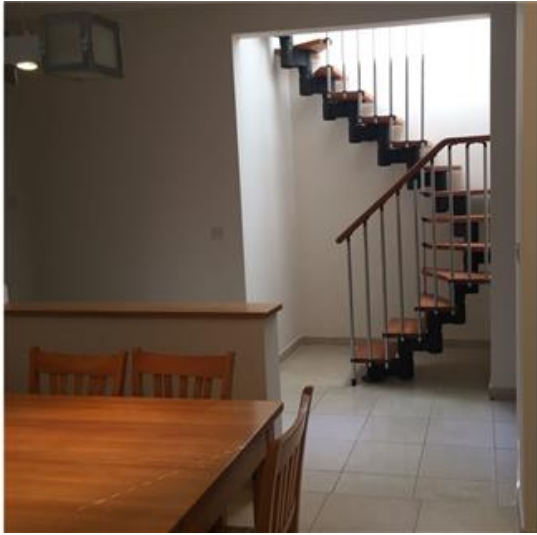
- ✓ Roof Terrace

Rooms

- ✓ Double Bedroom : 0 x 0 m (0 m2)
- ✓ Double Bedroom : 0 x 0 m (0 m2)
- ✓ Double Bedroom : 0 x 0 m (0 m2)
- ✓ Bathroom : 0 x 0 m (0 m2)
- ✓ Bathroom : 0 x 0 m (0 m2)

Gallery







RE/MAX Edge - Attard

RE/MAX Edge - Attard

M: 21480164

E: attard@remax.com.mt

T: 21480164

RE/MAX Edge - Attard

4Triq Antonio Schembri, Attard, Malta